

# Winglock 900



The Winglock 900 belongs to Boon Edam's top range of Security Barriers and offers a stylish indoor security access control solution. Constructed from a single frameless tempered glass door wing and a slim column, the Winglock 900 is a very space efficient barrier. The glass and stainless steel transparent design can match many surroundings, without creating an obtrusive barrier.

The fully automatic bi-directional barrier can be operated by an external control panel at the reception desk or

with an access control system, for example, a card reader on a console.

The column, which houses the drive, control system and locking mechanisms, is easy to install and allows quick and easy maintenance.

The mechanisms of the Winglock 900 are designed for a high standard of reliability with a separately adjustable speed and torque.

The Winglock 900 design matches the Transpalock 900 turnstile barrier and

can provide convenient access for wheelchairs and persons with large goods, luggage or trolleys. In this function the Winglock also offers a good side-entrance for the Boon Edam Trilocks or Speedlanes.

Boon Edam provides a full service from the request for information through to the installation and subsequent maintenance requirements of the product. Therefore our experienced sales staff can advise you in your choice with regard to the Winglock 900 or any other security barrier from Boon Edam.

# Winglock 900

## Technical specifications

### Capacity

30 passages per minute.  
Bi- directional

---

### Material

The column is finished with brushed stainless steel 320S, AISI 304.  
The door wing is of 8 mm tempered glass.

---

### Weight

43 kg

---

### Fail-Safe

The lock and the drive will disengage in the event of a power failure, or fire alarm allowing free passage.

---

### Power supply

230 VAC, 50 Hz + PE

---

### Power consumption

0.25 kW

---

### Power failure

The door wing unlocks on a power failure, creating free passage in either direction.  
Optionally if back-up power is available, the Winglock 900 can be programmed to open in the escape direction upon receipt of a fire alarm signal.

---

### Operation

Operated by an external control panel or compatible with most access control systems, for example, a card reader.

### Installation

Screw fixed in the floor surface. Other fixing options are available.

---

### Service and maintenance

The control and drive gear are mounted in the column for easy installation and maintenance.

---

### Optional accessories

- An external build in control panel, for example, at the reception desk.
  - A fixing for a card reader on the tube frame.
  - An external console for mounting the card reader.
- 

### Guide Rails

Boon Edam has an extended range of guide rails with (900-GL) or without (900-TR) glass panels and can advise on any custom requirement.

---

### Certification

The Winglock 900 complies with the machine directive (98/37/EEG), the EMC directive (89/336/EEG) and the low voltage directive (93/68/EEG).

The Winglock 900 has, like many other products of Boon Edam, been approved by the Dutch Council of the Disabled as being accessible for people with a disability.

### Working principle

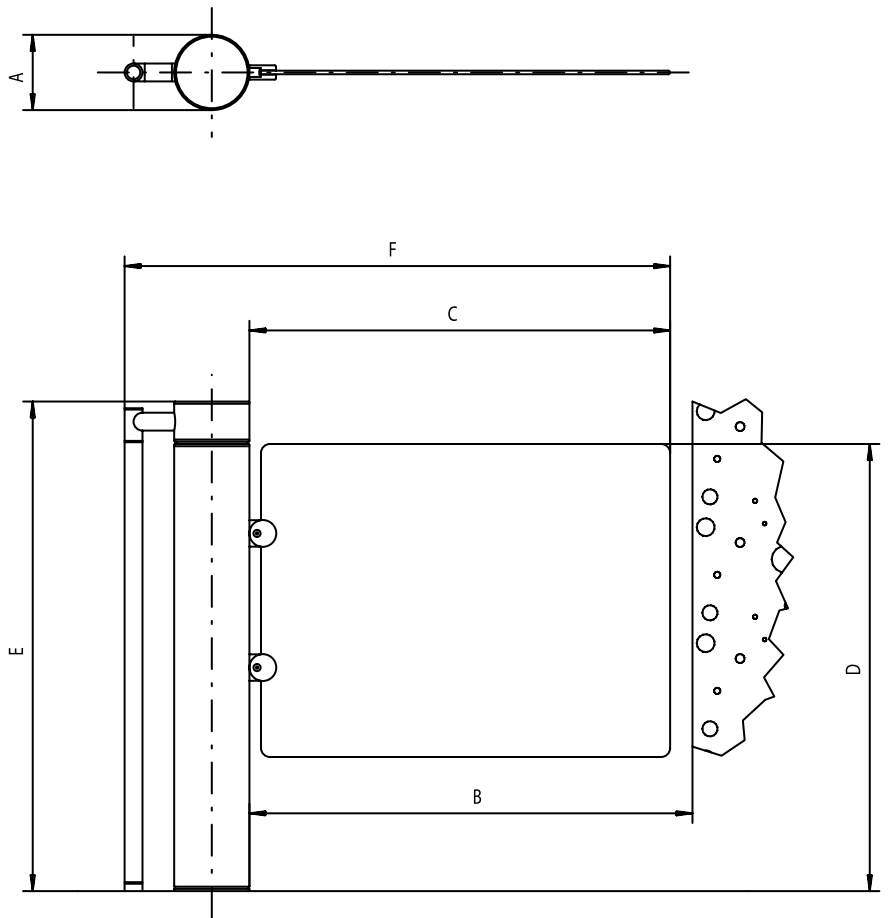
The Winglock 900 is locked in the rest position. The user can be authorised via an external control panel, for example, at the reception desk. Alternatively authorisation can be given via a card read system. Once authorisation is given, the gate opens in the desired direction 90° and then closes; the opening time can be adjusted.

The barrier allows traffic in both directions, and a number of authorisation signals are stored by the in-built control system so that the barrier will 'remember' to turn in the correct direction for each person.

In case of a power failure the Winglock 900 will unlock, allowing free passage in either direction.

The following working principle modes are possible in each direction:

- Free access;
- Access controlled electronically, with unlocking in case of a power failure or fire alarm;
- Access permanently mechanically locked.



### Dimensions table

		Winglock 900
<b>A</b>	Unit width	168 mm
<b>B</b>	Passage width	991 mm
<b>C</b>	Door wing length	941 mm
<b>D</b>	Door wing height (from floor)	1000 mm
<b>E</b>	Unit height	1095 mm
<b>F</b>	Overall width	1220 mm

# Winglock 900

## Winglock 900 features:

- Single door wing creating a wide passage
- Appropriate for wheelchairs, trolleys and large luggage passage
- Stylish transparent design
- Emergency escape route
- Cost and space efficient barrier
- Bi-directional access control



.....  
*Distributor*