

## Sump/Entry Termination Fitting with Gasket



1. Determine entry hole location and cut entry hole in sump wall using dimensions in Table 1.

Size	A	B	C
In.	In.	In.	In.
3" x 2"	6.88	4.00	4.00
4" x 3"	6.88	4.00	5.00

2. Place sump entry/termination fitting through hole with the threads on the inside of the sump wall. A maximum of 2° of offset is acceptable for a proper seal on a flat surface. For a rounded surface, no offset will be allowed; pipe must be perpendicular to the sump.

3. Locate 1/4" threaded outlet to the desired location. **If this fitting is used in an Open (Drainage) System, locate the 1/4" threaded outlet in the "South" position.** Leave 1/4" plastic threaded outlet protector in place until 1/4" fitting installation.

4. Lube gasket with a water based lubricant and place over the threads and against the sump wall.

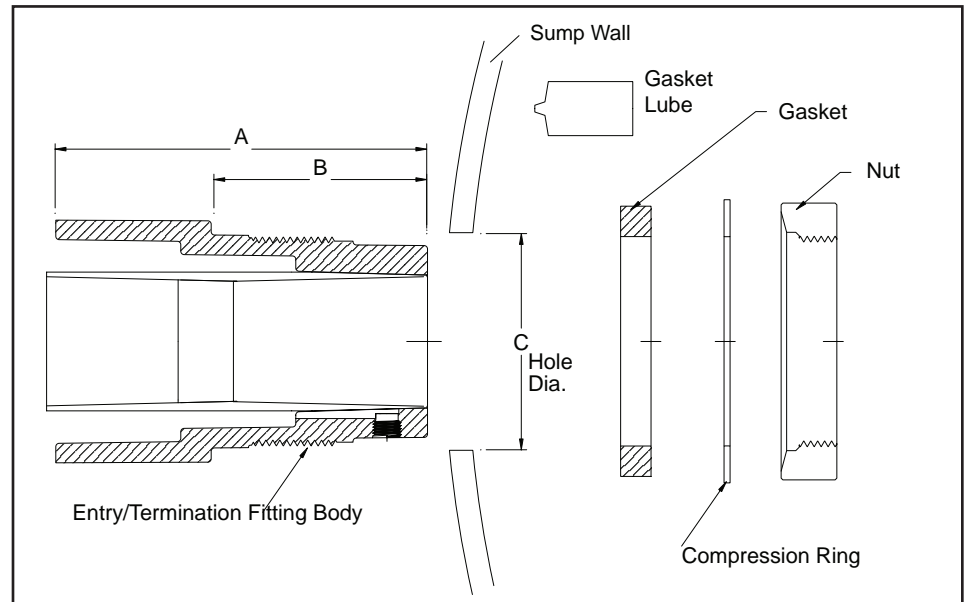
5. Place compression ring next to gasket.

6. Thread nut onto fitting hand tight. Do not tighten until system completion.

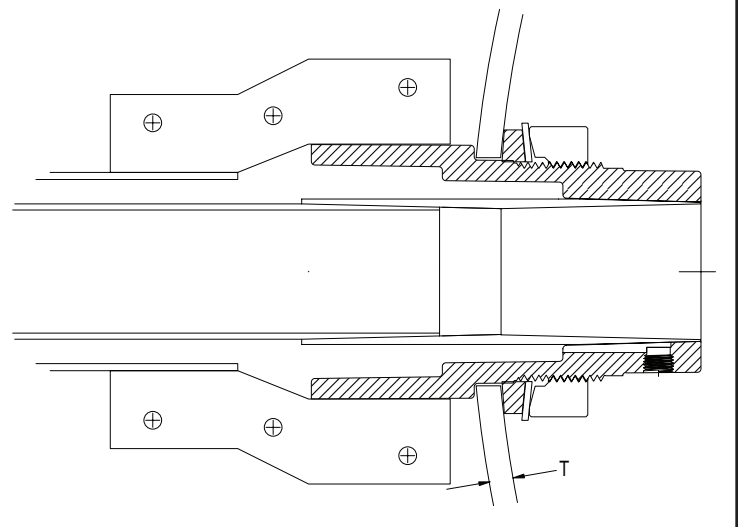
7. Remove 1/4" plastic threaded outlet protector. Apply adhesive to the 1/4" fitting and screw into 1/4" threaded outlet. Tighten to 40 in.-lbs. or 1 1/2-2 turns past hand tight. After installing fitting, be sure the interstitial space is free from excess adhesive. Install a short hose and blow excess adhesive through air passage.

8. Connect only flexible tubing or hoses to the 1/4" side outlet. NOTE: Tubing or hoses must be rated to full vacuum.

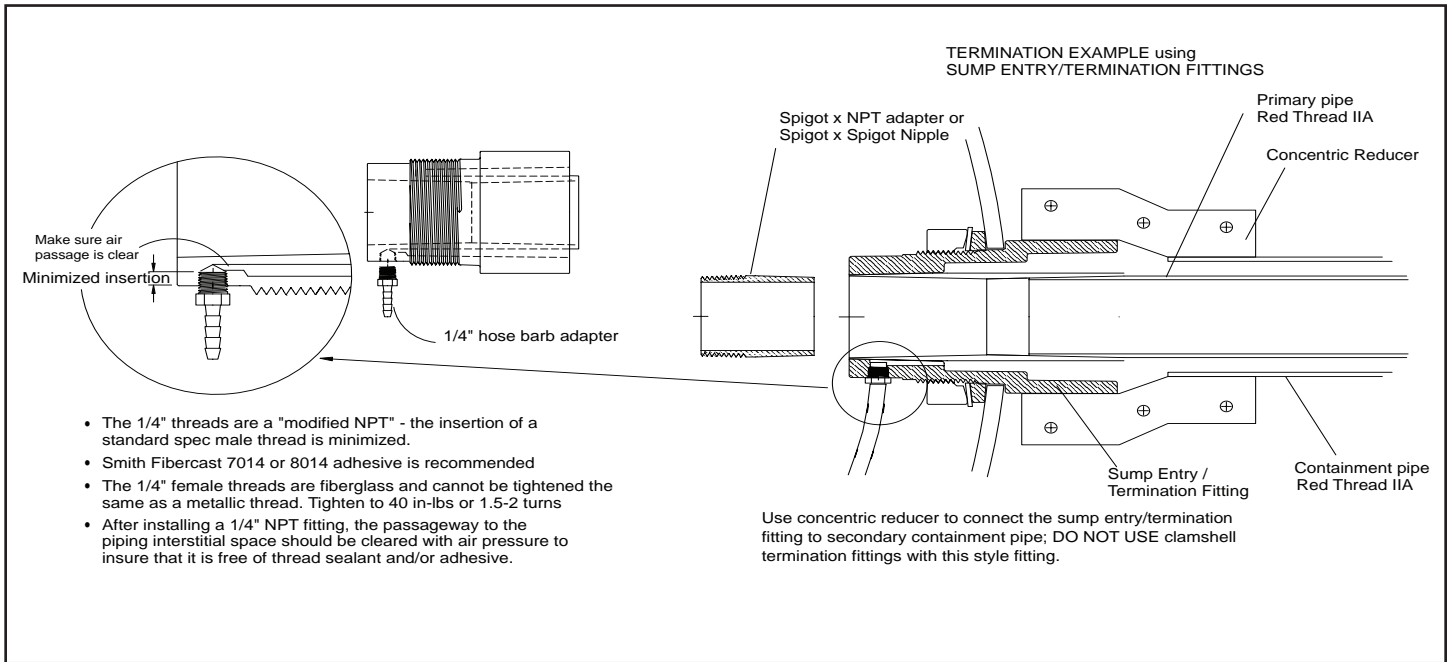
9. Tighten nut for gasket seal at sump locations prior sump test.



Fitting Size	Round 42" Sump	Round 48" Sump	Flat Dispenser
	"T"	"T"	"T"
3x2	3/8	3/8	1/2
4x3	5/16	3/8	1/2



# Sump Entry/Termination Fitting with Gasket



It is the policy of Fiber Glass Systems to improve its products continually. In accordance with that policy, the right is reserved to make changes in specifications, descriptions, and illustrative material contained in this bulletin as conditions warrant. Always cross-reference the bulletin date with the most current version listed at <http://www.fgspipe.com>. The information contained herein is general in nature and is not intended to express any warranty of any type whatsoever, nor shall any be implied.

