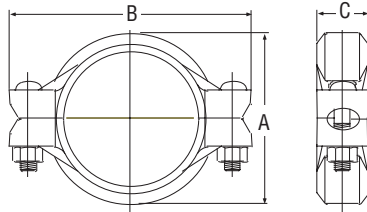


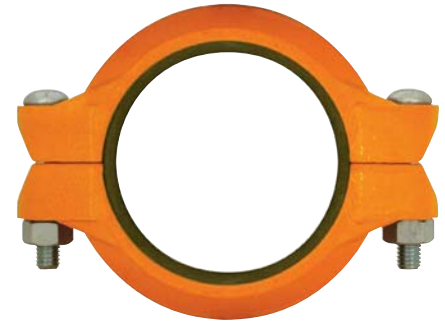
COUPLINGS

Figure 705 Flexible Coupling

The Figure 705 Flexible Coupling is capable of pressures up to 500 psi (34.5 bar) depending on pipe size and wall thickness. It provides a dependable method of joining pipe and is suitable for use in a variety of applications. Figure 705 Flexible Couplings in sizes 1 1/4" (DN 32) to 6" (DN 150) feature a clamshell design that makes installation easier and faster.



For Fire Protection Pressure Rating and Listing / Approval information contact Tyco Fire & Building Products.



Tech Data: G110

Nominal Size Inches mm	Pipe O.D. Inches mm	Max.† Pressures psi bar	Max. End† Load lbs kN	Max. End*‡ Gap Inches mm	Deflection ‡		Nominal Dimensions			Coupling Bolts		Approx. Weight lbs kg
					Degrees Per Coupling	Inches/ Foot mm/m	A Inches mm	B Inches mm	C Inches mm	Qty.	Size Inches mm	
1 1/4 32	1.660 42.4	500 34.5	1,082.1 4.81	0.13 3.3	4°19'	0.90 75.0	2.56 65.0	4.19 106.4	1.81 46.0	2	3/8 x 2 1/4 M10 x 57	1.5 0.7
1 1/2 40	1.900 48.3	500 34.5	1,417.6 6.30	0.13 3.3	3°46'	0.79 65.8	2.75 69.9	4.44 112.8	1.81 46.0	2	3/8 x 2 1/4 M10 x 57	1.6 0.7
2 50	2.375 60.3	500 34.5	2,215.1 9.85	0.13 3.3	3°1'	0.63 52.5	3.25 82.6	4.88 124.0	1.88 47.8	2	3/8 x 2 1/4 M10 x 57	1.7 0.8
2 1/2 65	2.875 73.0	500 34.5	3,245.9 14.43	0.13 3.3	2°29'	0.52 43.3	3.69 93.7	5.50 139.7	1.88 47.8	2	3/8 x 2 1/4 M10 x 57	2.0 0.9
	3.000 76.1	500 34.5	3,534.3 15.72	0.13 3.3	2°23'	0.50 41.7	4.00 101.6	5.75 146.1	1.88 47.8	2	M12 x 76	3.1 1.4
3 80	3.500 88.9	500 34.5	4,810.6 21.39	0.13 3.3	2°3'	0.43 35.8	4.38 111.3	6.50 165.1	1.88 47.8	2	1/2 x 3 M12 x 76	3.1 1.4
	4.250 108.0	500 34.5	7,093.1 31.55	0.25 6.4	3°22'	0.70 58.3	5.50 139.7	7.50 190.5	2.06 52.3	2	M12 x 76	4.2 1.9
4 100	4.500 114.3	500 34.5	7,952.2 35.35	0.25 6.4	3°11'	0.67 55.8	5.69 144.5	7.75 196.9	2.06 52.3	2	1/2 x 3 M12 x 76	4.0 1.8
	5.250 133.0	450 31.0	9,741.4 43.33	0.25 6.4	2°44'	0.56 46.7	6.56 166.6	9.50 241.3	2.06 52.3	2	M16 x 83	7.2 3.3
	5.500 139.7	450 31.0	10,691.2 47.56	0.25 6.4	2°36'	0.55 45.5	6.81 173.0	9.75 247.7	2.06 52.3	2	M16 x 83	7.2 3.3
5 125	5.563 141.3	450 31.0	10,937.6 48.63	0.25 6.4	2°35'	0.54 45.0	6.88 174.8	9.75 247.7	2.06 52.3	2	5/8 x 3 1/4 M16 x 83	7.1 3.2
	6.250 159.0	450 31.0	13,805.8 61.41	0.25 6.4	2°17'	0.48 40.0	7.56 192.0	10.31 261.9	2.06 52.3	2	M16 x 83	7.4 3.4
	6.500 165.1	450 31.0	14,932.4 66.36	0.25 6.4	2°12'	0.46 38.3	7.75 196.9	10.69 271.5	2.06 52.3	2	M16 x 83	7.1 3.2
6 150	6.625 168.3	450 31.0	15,512.2 68.97	0.25 6.4	2°10'	0.45 37.5	7.94 201.7	10.69 271.5	2.06 52.3	2	5/8 x 3 1/4 M16 x 83	7.1 3.2
	8.500 216.3	450 31.0	25,535.3 113.59	0.25 6.4	1°40'	0.35 29.2	10.07 255.8	13.50 342.9	2.31 58.7	2	M20 x 121	12.4 5.6
8 200	8.625 219.1	450 31.0	26,291.8 116.89	0.25 6.4	1°40'	0.35 29.2	10.19 258.8	13.56 344.4	2.50 63.5	2	3/4 x 4 1/4 M20 x 121	14.5 6.6
10 250	10.750 273.0	350 24.1	31,766.9 141.31	0.25 6.4	1°20'	0.28 23.3	12.69 322.3	16.38 416.1	2.63 66.8	2	1 x 6 1/2 M24 x 165	28.0 12.7
12 300	12.750 323.9	350 24.1	44,686.7 198.78	0.25 6.4	1°7'	0.23 19.2	14.94 379.5	18.88 479.6	2.63 66.8	2	1 x 6 1/2 M24 x 165	36.5 16.6

† Maximum pressure and end load are total from all loads based on standard weight steel pipe. Pressure ratings and end loads may differ on other pipe materials and/or wall thickness. Contact Tyco Fire & Building Products for details.

* Maximum available gap between pipe ends, minimum gap = 0.

‡ Maximum end gap and deflection are for cut grooved standard weight pipe. Values for roll grooved pipe will be 1/2 that of cut grooved. Please refer to General Notes on page 17.

GROOVED
COUPLINGS
& FITTINGS