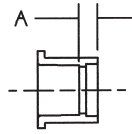


CPVC-CTS Pressure Fittings

BUSHINGS (Continued)

4718-T

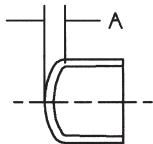


Transition Bushing (Spigot IPS x Slip CTS)

NOM. SIZE		APPROX. NET WT./LBS.	DIM. A INCHES
1	(IPS) x 1 (CTS)	.030	9/32
1 1/4	(IPS) x 1 1/4 (CTS)	.057	1/4
1 1/2	(IPS) x 1 1/2 (CTS)	.070	3/16
2	(IPS) x 2 (CTS)	.111	1/8

CAPS

4717

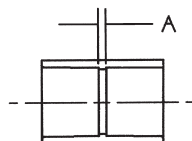
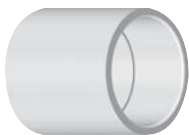


Cap (Slip)

NOM. SIZE		APPROX. NET WT./LBS.	DIM. A INCHES
1/2		.012	1/8
3/4		.019	1/8
1		.034	5/16
1 1/4		.061	7/16
1 1/2		.100	1/2
2		.219	5/8

COUPLINGS

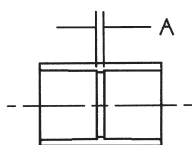
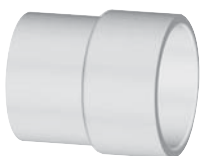
4701



Coupling (Slip x Slip)

NOM. SIZE		APPROX. NET WT./LBS.	DIM. A INCHES
1/2		.017	1/8
3/4		.030	1/8
3/4 x 1/2		.021	1/8
1		.048	1/8
1 x 3/4		.039	1/8
1 1/4		.086	1/8
1 1/2		.139	1/8
2		.305	1/8

4701-T



Transition Coupling (Slip IPS x Slip CTS)

NOM. SIZE		APPROX. NET WT./LBS.	DIM. A INCHES
3/4	(IPS) x 3/4 (CTS)	.039	1/8
1	(IPS) x 1 (CTS)	.068	1/8
2	(IPS) x 2 (CTS)	.330	1/8

FLOWGUARD GOLD
CPVC

Do not use or test the products in this catalog with compressed air or other gases.