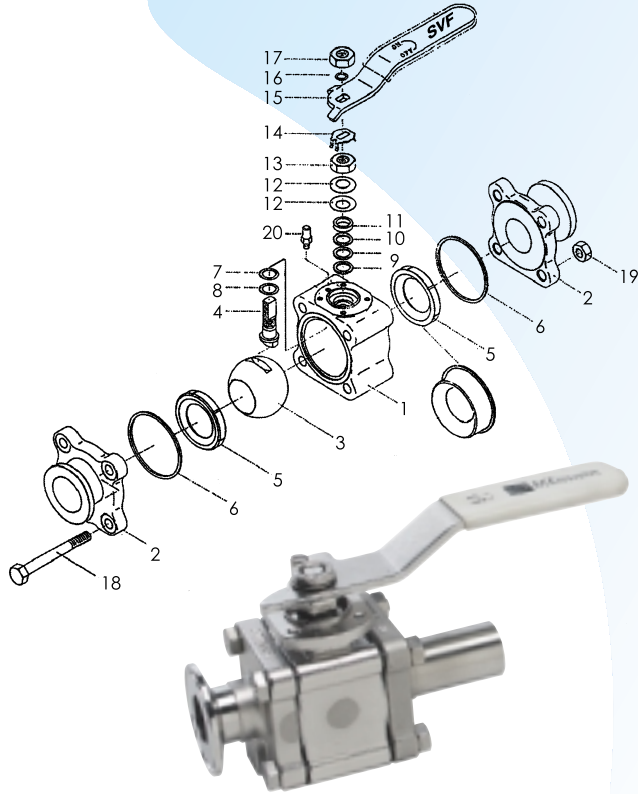
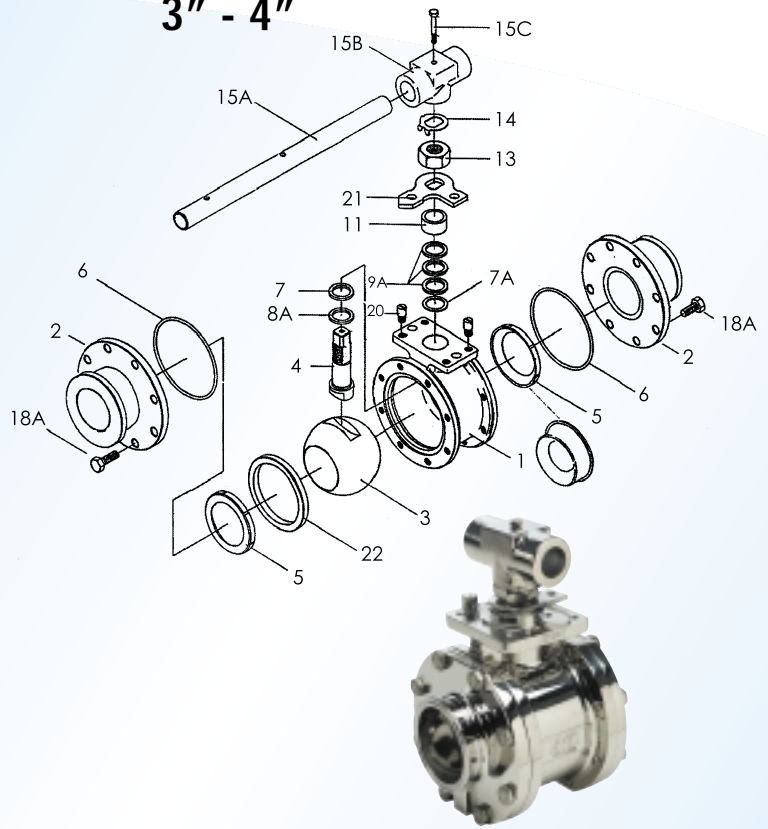


Valve Components

1/2" - 2 1/2"



3" - 4"



Part No.	Part	Qty	Description
1	Body	1	316L, ASTM A351-CF3M
2	Pipe Ends	2	316L, ASTM A351-CF3M
3	Ball	1	316L
4	Stem	1	316L
5	Valve Seat	2	PTFE-TFM, NRG, PEEK, Cavity Filler PTFE-TFM
6	Valve Seal	2	PTFE
7	Thrust Bearing	1	PTFE
7A	Stem Location Ring (3" & 4")	1	Stainless Steel 316
8	Thrust Bearing	1	Peek
8A	Thrust Bearing	1	Peek
9	Stem Packing	2	RT-TFE
9A	Stem Packing (3" & 4")	3	PTFE
10	Seal Protector	1	Peek
11	Gland Packing	1	Stainless Steel 316L
12	Belleville Washer	2	Stainless Steel

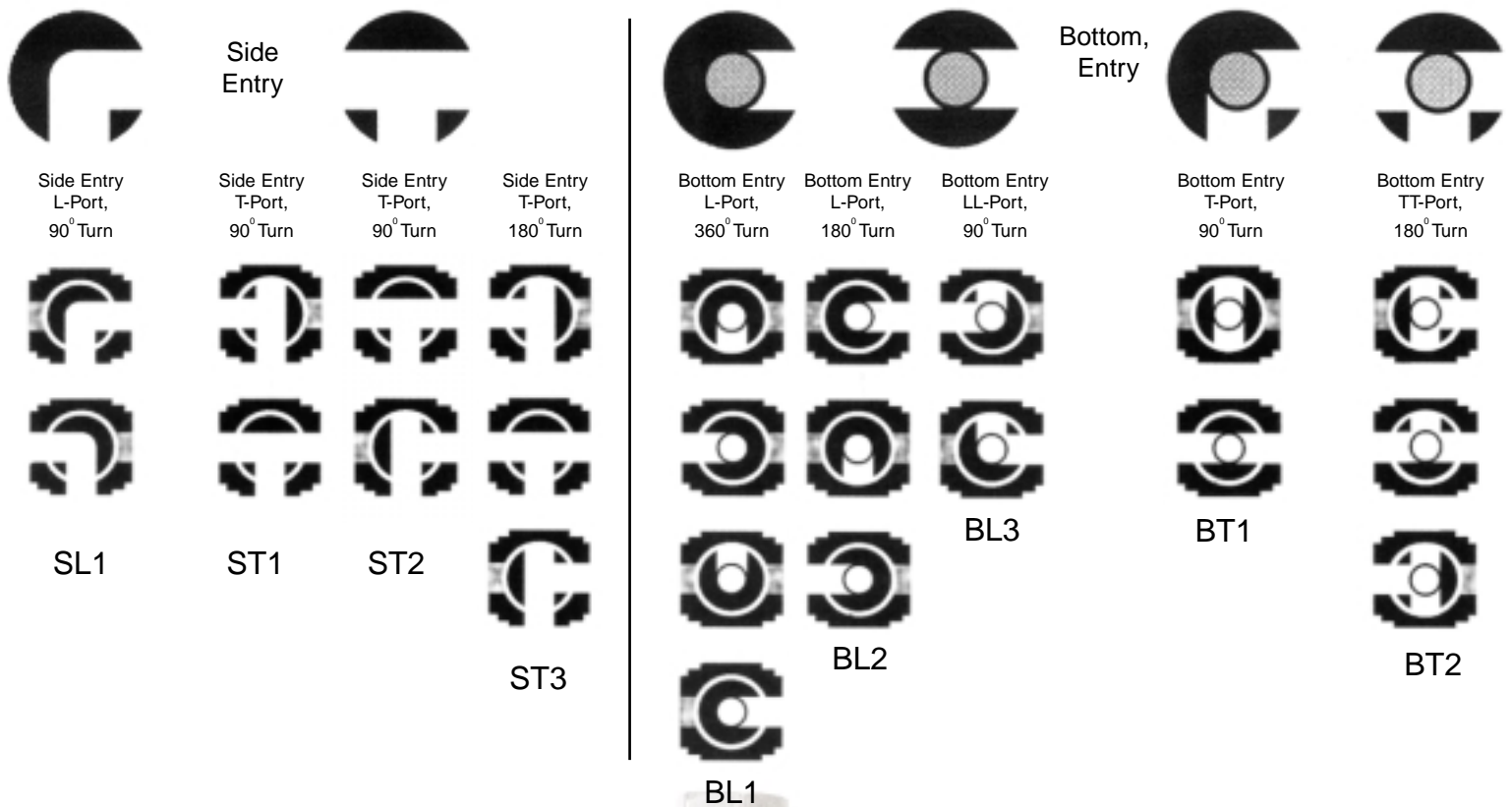
Part No.	Part	Qty	Description
13	Packing Nut	1	Stainless Steel 316
14	Lock Tab	2	Stainless Steel 309
15	Handle (1/2"-2")	1	Stainless Steel 304
15A	Wrench (3" & 4")	1	Stainless Steel 304
15B	Wrench Block	2	Stainless Steel 304
15C	Hex Head Bolt	2	Stainless Steel 304
16	Lock Washer	1	Stainless Steel 304
17	Handle Nut (1/2"-2")	1	Stainless Steel 316
18	Body Bolts	1	Stainless Steel 316
18A	Body Bolt	1	Stainless Steel 304
19	Nuts	2	Stainless Steel 304
20	Stop Pin	3	Stainless Steel 304
21	Stop Plate	1	Stainless Steel 304
22	Seat Retainer	1	Stainless Steel CF3M

TSB7 Series Three Way Valve

The CleanFLOW™ TSB7 Series three-way valve is an ideal choice for high purity piping systems. Its inherent design features can replace two or three standard valves, saving space and reducing costs.

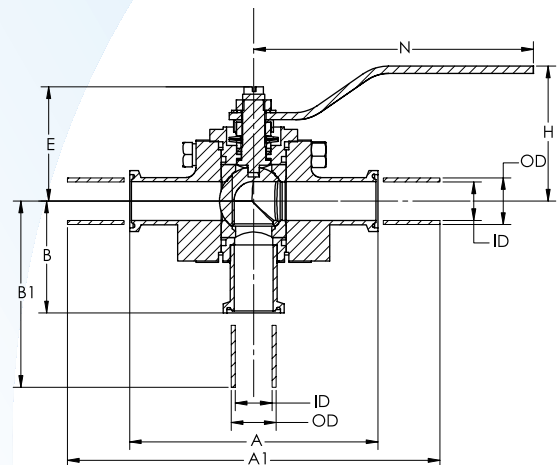
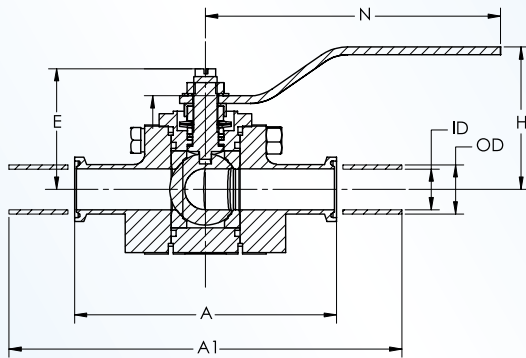
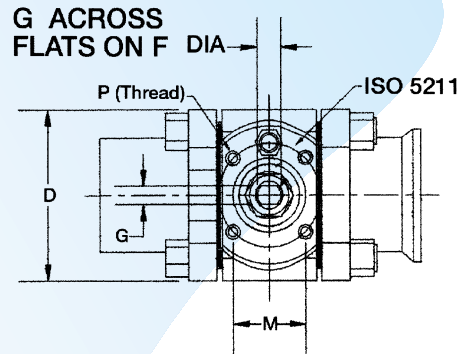
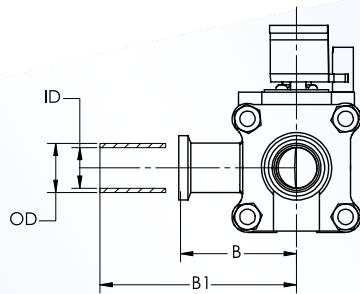
At the heart of the TSB7 design is the use of a common port that facilitates tri-directional flow requirements, eliminating deadlegs and in its optimal position is fully drainable. The common port can either be located at the bottom or side of the valve. The existing seats on the two remaining ports provide positive shutoff.

Three-way Ball Configurations



SIZE	STYLE	BODY & END MATERIAL	BALL & STEM MATERIAL	SEAT	SEAL	ENDS	FLOW PATTENY	OPTIONS
1/2" 3/4" 1" 1-1/2" 2" 2-1/2" 3" 4"	TSB7 (Non-Cavity Filled) TSBC7 (Cavity Filled)	6 - CF3M (316L)	6 - 316L	A - TFE - TFM N - NRG K - PEEK	A - TFE E - EPDM V - VITON	TR - T - Clamp ETO - Extended Tube OD Cherry Burrell I - I Line S - S Line Q - Q Line	ST1 ST2 SL1 BT1 BT2 BL1 BL2 BL3	<ul style="list-style-type: none"> • Purge Ports • Oval Handle • Spring Return Handle • Locking Device • Electro-Polish • Fusible Link • Stem Extentions

Dimensions & Weight 1/2" - 2 1/2"



size	A	A1	B	B1	C	D	E	F	G	H	M	N	P	I.D. & PORT	Tube O.D.	ISO	Weight (lbs)
	TR	ETO															
1/2"	3.50	5.50	1.67	2.96	1.25	1.75	1.50	1/4-20	0.22	1.76	1.00	4.50	M5	0.37	0.50	F03	1.50
3/4"	4.00	6.00	1.76	3.05	1.50	2.05	1.59	1/4-20	0.22	1.87	1.00	4.50	M5	0.62	0.75	F03	1.75
1"	4.50	6.50	1.95	3.23	1.75	2.42	2.19	5/16-18	0.30	2.40	1.17	5.75	M5	0.87	1.00	F04	3.20
1-1/2"	5.50	7.50	2.30	3.58	2.25	3.16	2.88	3/8-16	0.35	3.16	1.39	7.00	M6	1.37	1.50	F05	8.00
2"	6.25	8.00	2.46	3.74	2.62	3.56	3.06	3/8-16	0.35	3.35	1.39	7.00	M6	1.87	2.00	F05	13.00
2-1/2"	6.75	9.50	3.20	4.50	3.85	4.90	4.80	M20	0.55	5.83	2.80	10.00	M8	2.37	2.50	F07	23.00

3" & 4" consult factory for dimensions