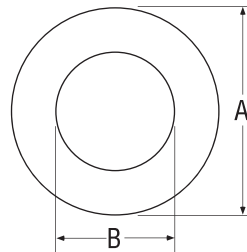


# FLANGES

## Flange Washer Adapter

**MATERIAL: CARBON STEEL**

Nominal Size Inches mm	Pipe O.D. Inches mm	Nominal Dimensions	
		A Inches mm	B Inches mm
†2	2.375	3.94	2.75
50	60.3	100.0	57.2
†2½	2.875	4.69	2.75
65	73.0	119.1	69.9
*	3.000	4.89	2.88
	76.1	124.2	73.2
‡	3.500	5.19	3.38
	88.9	131.8	85.9
*3	3.500	5.48	3.38
80	88.9	139.2	85.9
†4	4.500	6.69	4.38
100	114.3	169.9	111.3
*4	4.500	6.27	4.38
100	114.3	159.3	111.3
†5	5.563	7.56	5.38
125	141.3	192.0	136.7
*	5.500	7.45	5.32
	139.7	189.2	135.1
*	6.500	8.47	6.32
	165.1	215.1	160.5
†6	6.625	8.56	6.44
150	168.3	217.4	163.6
†8	8.625	10.81	8.44
200	219.1	274.6	214.4
*8	8.625	10.64	8.44
200	219.1	270.3	214.4
†10	10.750	13.19	10.50
250	273.0	335.0	266.7
*10	10.750	12.85	10.50
250	273.0	326.4	266.7
†12	12.750	15.94	12.50
300	323.9	404.9	317.5
*12	12.750	15.01	12.50
300	323.9	381.3	317.5



- \* DIN
- † DIN and ANSI
- ‡ ANSI

**Note:** Metal flange washer adapters are required when the Figure 71 Flange Adapter is used against surfaces such as:

- Rubber surfaces
- Adapting to AWWA cast flanges
- Rubber faced wafer valves
- Serrated flange surfaces

Available in stainless steel ASTM A666 Type 304-2B. Contact Tyco Fire & Building Products for price and availability.

Please refer to General Notes on page 17.

**GROOVED  
COUPLINGS  
& FITTINGS**