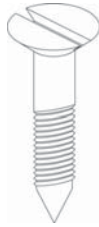
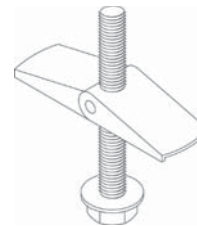
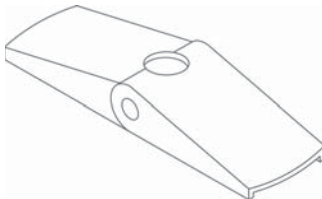


Fig. 122 - Wood Screw Flat Head


Material — Carbon Steel
Finish — Electro-Galvanized
Order By — Figure number and size

Fig. 123 - Toggle Bolt


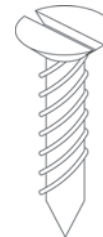
Material — Carbon Steel
Finish — Electro-Galvanized
Order By — Figure number and size

Fig. 124 - Spring Toggle Head Only


Material — Carbon Steel
Function — Used with threaded rod in hollow walls
Finish — Electro-Galvanized
Order By — Figure number and size

Dimensions • Weights

Size	Drill Hole Size	Approx. Wt./100
1/4	5/8	3
3/8	7/8	7
5/8	1 1/4	10

Fig. 125 - Drive Screw


Material — Carbon Steel
Function — Equivalent to a nail, but has greater holding power
Finish — Plain and Electro-Galvanized
Order By — Figure number, size and finish

Dimensions • Weights

Size	Length	Approx. Wt./100
16	2	2.2

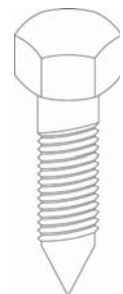
Fig. 126 - Lag Bolt Gimlet Point

Material — Carbon Steel
Function — Designed to fasten metal to wood. Lag screws are made with hex heads in lengths of 6" or shorter and square heads in lengths longer than 6". Both types have coarse lag threads and gimlet points and are available in diameters of 1/4" to 5/8" inclusive. Square-head lag screws are also available in 3/4", 7/8" and 1" diameters.

Finish — Plain

Note — Available in Electro-Galvanized and HDG finish.

Order By — Figure number, bolt size, length and finish


Dimensions • Weights

Lag Bolt Screw Size	Approx. Wt./100					
	1" Length	1 1/8" Length	2" Length	2 1/8" Length	3" Length	4" Length
1/4	1.5	2.1	2.7	3.2	3.8	4.9
3/8	4.0	5.3	6.6	7.8	9.1	11.6
1/2		11.0	13.3	15.5	17.8	22.3
5/8			23.2	26.8	30.4	37.6

Dimensions

Hex Lag Bolt Head Dimensions			
Lag Bolt Screw Size	Width Across Flats	Width Across Points	Head Thickness
1/4	7/16	1/2	11/64
3/8	9/16	21/32	1/4
1/2	3/4	7/8	11/32
5/8	15/16	1 3/32	27/64