

COUPLINGS

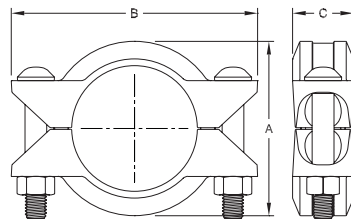
Figure 770 High Pressure Rigid Coupling

The Figure 770 High Pressure Rigid Coupling provides a rigid joint by firmly gripping along the full 360° circumference of the pipe grooves. Coupling housings are cast ductile iron to ASTM A-536. The Figure 770 Rigid Coupling is available with a grade "EN" EPDM NSF 61 approved tri-seal gasket for potable water applications. It is capable of pressures up to 500 PSI depending on pipe size and wall thickness.

Rigid Couplings are recommended for low temperature and vacuum applications.



**STAINLESS
STEEL
SYSTEM**



Tech Data: G138

Nominal Pipe Size		Max.† Pressures psi bar	Max.† End Load lbs kN	Max.‡ End Gap Inches mm	Nominal Dimensions			Coupling Bolts		Approx. Weight lbs kg
ANSI Inches DN	O.D. Inches mm				A Inches mm	B Inches mm	C Inches mm	Qty.	Size** Inches mm	
2	2.375	500	4,430.1	0.14	3.53	5.72	1.88	2	5/8 x 2 3/4	4.3
DN50	60,3	35	19,71	3,6	89,7	145,3	47,8		M16 x 70	2,0
2 1/2	2.875	500	6,491.8	0.14	4.06	6.00	1.88	2	5/8 x 3 1/2	5.0
DN65	73,0	35	28,88	3,6	103,1	152,4	47,8		M16 x 89	2,3
3	3.500	500	9,621.1	0.14	4.78	6.76	1.88	2	5/8 x 3 1/2	5.3
DN80	88,9	35	42,79	3,6	121,4	171,7	47,8		M16 x 89	2,4
4	4.500	400	15,904.3	0.25	6.01	8.50	2.10	2	3/4 x 4 1/4	7.7
DN100	114,3	28	70,74	6,4	152,7	215,9	53,3		M20 x 108	3,5
6	6.625	300	34,471.6	0.25	8.51	11.25	2.10	2	7/8 x 5 1/2	16.2
DN150	168,3	21	153,33	6,4	216,2	285,8	53,3		M22 x 140	7,3
8	8.625	300	46,741.0	0.25	10.93	13.75	2.60	2	1 x 5 1/2	24.0
DN200	219,1	21	207,90	6,4	277,6	349,3	66,0		M24 x 140	10,9
10	10.750	300	72,610.1	0.25	13.46	16.00	2.60	2	1 x 6 1/2	32.0
DN250	273,0	21	322,97	6,4	341,9	406,4	66,0		M24 x 165	14,5
12	12.750	250	102,141.0	0.25	15.52	18.00	2.60	2	1 x 6 1/2	40.0
DN300	323,9	17	454,32	6,4	394,2	457,2	66,0		M24 x 165	18,1

* Maximum available gap between pipe ends, minimum gap = 0.

† Maximum pressure and end load are total from all loads based on Schedule 10 stainless steel pipe. Pressure ratings and end loads may differ for other pipe materials and/or wall thickness. Contact Tyco Fire & Building Products for details.

** Gold color coded metric bolt sizes for DN50 - DN300 couplings are available upon request

‡ Max End Gap and Deflection is for cut grooved standard weight pipe. Values for roll grooved pipe will be 1/2 that of cut grooved.

Please refer to General Notes on page 17.