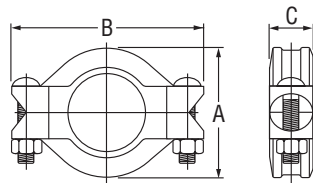


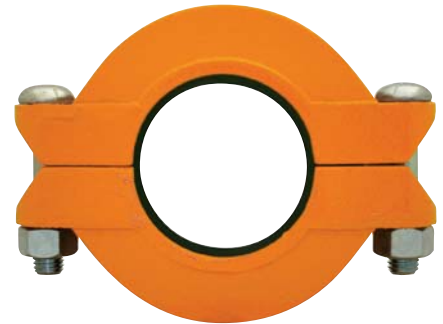
COUPLINGS

Figure 716 Flexible Reducing Coupling

The Figure 716 Reducing Coupling is capable of pressures up to 500 psi (34.5 bar) depending on pipe size and wall thickness. It provides a direct transition between two different pipe sizes, replacing two couplings and a reducing fitting.



For Fire Protection Pressure Rating and Listing / Approval information contact Tyco Fire & Building Products.



Tech Data: G120

Nominal Size Inches mm	Pipe O.D. Inches mm	Max.† Pressures psi bar	Max. End† Load lbs kN	Max. End*‡ Gap Inches mm	Deflection ‡		Nominal Dimensions			Coupling Bolts		Approx. Weight lbs kg
					Degrees Per Coupling	Inches/ Foot mm/m	A Inches mm	B Inches mm	C Inches mm	Qty.	Size Inches mm	
2 x 1½ 50 x 40	2.375 x 1.900 60.3 x 48.3	500 34.5	1,417.6 6.31	0.13 3.3	1°53'	0.39 32.5	3.50 88.9	5.06 128.5	1.88 47.8	2	¾ x 2¼ M10 x 57	2.0 0.9
2½ x 2 65 x 50	2.875 x 2.375 73.0 x 60.3	500 34.5	2,215.1 9.85	0.13 3.3	1°33'	0.32 26.7	4.00 101.6	5.50 139.7	1.88 47.8	2	¾ x 2¼ M10 x 57	2.5 1.1
	3.000 x 2.375 76.1 x 60.3	500 34.5	2,215.1 9.85	0.13 3.3	1°34'	0.32 26.7	4.19 106.4	5.88 149.4	1.88 47.8	2	M12 x 76	3.1 1.4
3 x 2 80 x 50	3.500 x 2.375 88.9 x 60.3	500 34.5	2,215.1 9.85	0.13 3.3	1°17'	0.27 22.5	4.69 119.1	6.50 165.1	1.88 47.8	2	½ x 3 M12 x 76	4.5 2.0
3 x 2½ 80 x 65	3.500 x 2.875 88.9 x 73.0	500 34.5	3,245.9 14.44	0.13 3.3	1°17'	0.27 22.5	4.69 119.1	6.50 165.1	1.88 47.8	2	½ x 3 M12 x 76	4.6 2.1
	3.500 x 3.000 88.9 x 76.1	500 34.5	3,534.3 15.72	0.13 3.3	1°17'	0.27 22.5	4.69 119.1	6.50 165.1	1.88 47.8	2	M12 x 76	4.5 2.0
4 x 2 100 x 60	4.500 x 2.375 114.3 x 60.3	500 34.5	2,215.1 9.85	0.19 4.8	2°38'	0.55 45.8	6.00 152.4	8.13 206.5	2.00 50.8	2	⅝ x 3¼ M16 x 83	7.0 3.2
4 x 2½ 100 x 65	4.500 x 2.875 114.3 x 73.0	500 34.5	3,245.9 14.44	0.19 4.8	2°38'	0.55 45.8	6.00 152.4	8.13 206.5	2.00 50.8	2	⅝ x 3¼ M16 x 83	6.1 2.8
	4.500 x 3.000 114.3 x 76.1	500 34.5	3,534.3 15.72	0.19 4.8	2°38'	0.55 45.8	6.00 152.4	8.13 206.5	2.00 50.8	2	M16 x 83	6.2 2.8
4 x 3 100 x 80	4.500 x 3.500 114.3 x 88.9	500 34.5	4,810.6 21.40	0.19 4.8	2°38'	0.55 45.8	6.00 152.4	8.13 206.5	2.00 50.8	2	⅝ x 3¼ M16 x 83	6.2 2.8
	5.500 x 4.500 139.7 x 114.3	500 34.5	7,952.2 35.37	0.25 6.4	2°38'	0.55 45.8	7.06 179.3	9.50 241.3	2.06 52.3	2	M20 x 121	11.0 5.0
5 x 4 125 x 100	5.563 x 4.500 141.3 x 114.3	500 34.5	7,952.2 35.37	0.25 6.4	2°5'	0.44 36.7	7.13 181.1	9.56 242.8	2.06 52.3	2	¾ x 4¾ M20 x 121	10.1 4.6
	6.500 x 4.500 165.1 x 114.3	400 27.6	6,361.7 28.30	0.25 6.4	1°50'	0.38 31.7	8.18 207.8	10.81 274.6	2.06 52.3	2	M20 x 121	12.5 5.7
6 x 4 150 x 100	6.625 x 4.500 168.3 x 114.3	400 27.6	6,361.7 28.30	0.25 6.4	1°44'	0.36 30.0	8.38 212.9	10.88 276.4	2.06 52.3	2	¾ x 4¾ M20 x 121	12.5 5.7
6 x 5 150 x 125	6.625 x 5.563 168.3 x 141.3	400 27.6	9,722.3 43.25	0.25 6.4	1°44'	0.36 30.0	8.38 212.9	10.88 276.4	2.06 52.3	2	¾ x 4¾ M20 x 121	11.7 5.3
8 x 6 200 x 150	8.625 x 6.625 219.1 x 168.3	400 27.6	13,788.6 61.33	0.25 6.4	1°15'	0.26 21.7	10.69 271.5	13.75 349.3	2.25 57.2	2	⅞ x 6½ M22 x 165	23.5 10.7

† Maximum pressure and end load are total from all loads based on standard weight steel pipe. Pressure ratings and end loads may differ on other pipe materials and/or wall thickness. Contact Tyco Fire & Building Products for details.

* Maximum available gap between pipe ends, minimum gap = 0.

‡ Maximum end gap and deflection are for cut grooved standard weight pipe. Values for roll grooved pipe will be ½ that of cut grooved. Please refer to General Notes on page 17.

GROOVED
COUPLINGS
& FITTINGS