

Fig. 326 - Adjustable Support Roller

Size Range — 1" thru 30" pipe

Material — Cast iron and carbon steel

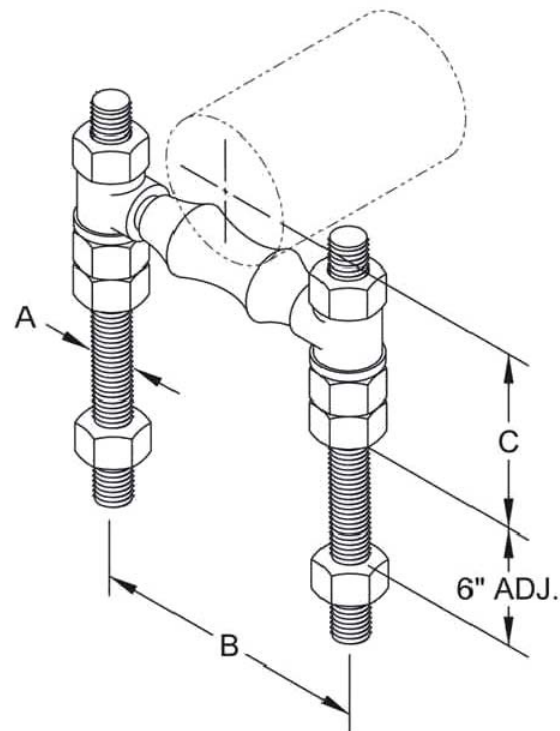
Function — For supporting pipe where movement may occur due to thermal expansion. Used where adjustment up to 6" is required.

Note — When pipe line is insulated, total outside diameter of pipe and covering should be used to determine size of hanger; also see Figs. 260-1 to 265-4.

Finish — Plain

Note — Available in Electro-Galvanized and HDG finish.

Furnished With — Fig. 322 Roller, two support rods and eight Fig. 113 Hex Nuts — not assembled.



Dimensions • Weights

Pipe Size	Rod Size A	B*	C	Max. Rec. Load Lbs.	Approx. Wt./100
1	3/8	3/4	2 ⁵ / ₁₆	600	100
1 ¹ / ₄	3/8	3 ³ / ₈	2 ¹ / ₂	600	101
1 ¹ / ₂	3/8	3 ⁵ / ₈	2 ⁵ / ₈	600	104
2	3/8	4 ¹ / ₁₆	2 ⁷ / ₈	600	112
2 ¹ / ₂	1/2	4 ⁷ / ₈	3 ¹ / ₂	600	236
3	1/2	5 ¹ / ₂	3 ⁷ / ₈	700	246
3 ¹ / ₂	1/2	6	4 ³ / ₁₆	750	259
4	1/2	6 ⁷ / ₈	4 ⁷ / ₈	750	451
5	5/8	8 ¹ / ₄	5 ⁷ / ₁₆	750	486
6	3/4	9 ⁵ / ₈	6 ⁵ / ₁₆	1070	795
8	7/8	11 ¹³ / ₁₆	7 ¹⁵ / ₁₆	1350	1182
10	7/8	14	9 ³ / ₁₆	1730	1562
12	1	16	10 ⁷ / ₁₆	2400	2312
14	1	18	11 ⁷ / ₈	3130	3091
16	1 ¹ / ₄	20 ¹ / ₄	13 ⁵ / ₁₆	3970	4102
18	1 ¹ / ₄	22 ¹ / ₂	14 ³ / ₈	4200	4902
20	1 ¹ / ₄	25	15 ⁷ / ₈	4550	7480
24	1 ¹ / ₂	28 ⁵ / ₈	18 ⁵ / ₁₆	6160	8572
30	1 ¹ / ₂	34 ¹ / ₂	23 ¹ / ₈	7290	16396

* Due to the inconsistent dimensions associated with cast parts, please contact the factory if the "B" dimension is critical for installation.