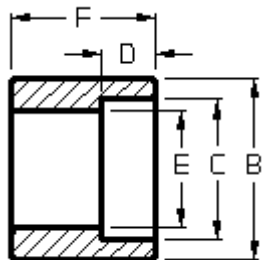


Penn Machine

Class 9000 Socketweld Half Coupling

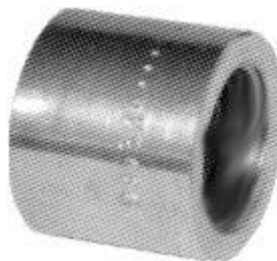
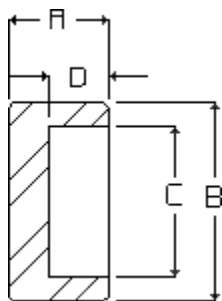


PENN CATALOG F2002 FIG NO. 19009
ASME-B16.11-2001

NOMINAL PIPE SIZE	1/2"	3/4"	1"	1-1/4"	1-1/2"	2"	2-1/2"	3"	3-1/2"	4"
"B"	1-3/4	2	2-1/2	2-3/4	3	3-5/8	4-1/2	5-1/2	6	6-1/2
"C"	.859	1.071	1.335	1.682	1.922	2.410	2.910	3.536	4.036	4.545
"D"	7/16	17/32	17/32	17/32	17/32	21/32	21/32	21/32	25/32	25/32
"E"	.252	.434	.599	.896	1.100	1.503	1.771	2.300	2.728	3.438
"F"	1-5/16	1-1/2	1-11/16	1-3/4	1-13/16	2-5/16	2-3/8	2-7/16	2-11/16	2-11/16
APPROX. Wt.	.76	1.40	1.69	2.86	4.62	7.54	10.56	12.10	14.62	16.21

Penn Machine

Class 9000 Socketweld Cap



PENN CATALOG F2002 FIG NO. 19010
ASME-B16.11-2001

NOMINAL PIPE SIZE	1/2"	3/4"	1"	1-1/4"	1-1/2"	2"	2-1/2"	3"	3-1/2"	4"
"A"	1-1/16	1-3/16	1-1/4	1-1/4	1-3/8	1-9/16	1-3/4	2	2-1/8	2-1/8
"B"	1-3/4	2	2-1/2	2-3/4	3	3-5/8	4-1/2	5-1/2	6	6-1/2
"C"	.859	1.071	1.335	1.682	1.922	2.410	2.910	3.536	4.036	4.545
"D"	7/16	17/32	17/32	17/32	17/32	21/32	21/32	21/32	25/32	25/32
APPROX. Wt.	.74	1.34	1.87	2.82	4.50	7.02	10.96	14.03	17.94	20.68

[Fitting catalog](#) | [Product catalog](#) | [Request quote/information](#) | [Home](#)

Web site created by Penn Machine. Send questions or comments to [James Friant](#).