



Type 800 series

| | |
|--|--|
| Measuring range for liquids* (measured with H ₂ O, 68°F) | 0.07 - 80.0 gpm |
| Measuring range for gases* (measured with H ₂ O, 68°F) | .15 - 30 Ft ³ /min. |
| Nominal size | 3/4" - 2-1/2" |
| Operat. Pressure (meas. at 68°F) | PN 240 psi |
| Operating temperature max. (dependent upon material and medium) | 212°F |
| Medium | Neutral, aggressive, liquid and gaseous media (Note: Graduated tubes for gasses and liquids have different code numbers.) |
| Viscosity range | max. 1000 m Pa x S/L |
| Body material | Trogamid, Polysulphone, PVC |
| Seals | EPDM, FPM |
| Type of connections | Union ends of PVC, ABS, PP, PVDF, malleable cast iron, stainless steel |
| Special feature Float | Float can be of different material to match the operating medium and is available with or without magnet. |



Type 850 series

| | |
|--|--|
| Measuring range for liquids* (measured with H ₂ O, 68°F) | 0.008 - 7.1 gpm |
| Measuring range for gases* (measured with H ₂ O, 68°F) | .71 Ft ³ /hr - 11.76 Ft ³ /min. |
| Nominal size | 3/8" - 1" |
| Operat. Pressure (meas. at 68°F) | PN 240 psi |
| Operating temperature max. (dependent upon material and medium) | 212°F |
| Medium | Neutral, aggressive, liquid and gaseous media (Note: Graduated tubes for gasses and liquids have different code numbers.) |
| Viscosity range | max. 1000 m Pa x S/L |
| Body material | Trogamid, Polysulphone, PVC |
| Seals | EPDM, FPM |
| Type of connections | Union ends of PVC, ABS, PP, PVDF, malleable cast iron, stainless steel |
| Special feature Float | Float can be of different material to match the operating medium and is available with or without magnet. |



Type 840 series

| | |
|--|---|
| Measuring range for liquids* (measured with H ₂ O, 68°F) | 13.33 - 222.22 gpm |
| Measuring range for gases* (measured with H ₂ O, 68°F) | - |
| Nominal size | 2-1/2" |
| Operat. Pressure (meas. at 68°F) | PN 150 psi |
| Operating temperature max. (dependent upon material and medium) | 140°F |
| Medium | Water |
| Viscosity range | max. 1000 m Pa x S/L |
| Body material | PVC |
| Seals | EPDM |
| Type of connections | PVC solvent-cement spigot malleable cast iron, stainless steel |
| Special feature Float | Float can be of different material to match the operating medium and is available with or without magnet. |

*High Purity Flowmeters are available with a PVDF float and tube, Viton o-rings and choice of end connections. Flowmeters are packaged and assembled in a class 100 cleanroom.



Type 52 Directly Operated

End Connections: BSP & NPT Threaded sockets
Control Function: Normally Closed
Voltage: AC:24,42,48,110,230V/50Hz; DC:12,24,48,110V
Body Material: PVC, PVDF
Max Working Medium Temperature: PVC:140°F; PVDF:212°F
Seal Material: FPM, Teflon®, EPDM
Ambient Temperature Range: 32°-104°F
Coil: Continuous duty Class A

| Pipe Size | Orifice Size | C _v Flow Factor | Operating Pressure* | | Watt Rating | | Weight (lbs.) |
|-----------|--------------|----------------------------|---------------------|------|-------------|------|---------------|
| | | | Min | Max | AC | DC | |
| 1/4" | 5/64" | 0.17 | 0 | 85 | 7.45 | 7.75 | 0.46 |
| 1/4" | 5/32" | 0.35 | 0 | 42.5 | 7.45 | 7.75 | 0.46 |
| 1/4" | 1/4" | 0.7 | 0 | 21 | 7.45 | 7.75 | 0.46 |

*Requires 15 psi minimum operating pressure differential to ensure proper closing in a closed loop system.

Solenoid Enclosure: IP 65

**Angle Body available upon request



Type 102 Directly Operated

End Connections: NPT Threaded sockets; Adhesive sockets
Control Function: Normally Closed
Voltage: AC: 24,42,48,110,230,240V/50Hz, 24,110,230V/60Hz; DC: 12,24,48,110V
Body Material: PVC, PVDF
Max Working Medium Temperature: PVC:140°F; PVDF:212°F
Seal Material: FPM, Teflon®, EPDM
Ambient Temperature Range: 32°-104°F
Coil: Continuous duty Class A

| Pipe Size | Orifice Size | C _v Flow Factor | Operating Pressure* | | Watt Rating | | Weight (lbs.) |
|-----------|--------------|----------------------------|---------------------|-----|-------------|------|---------------|
| | | | Min | Max | AC | DC | |
| 1/4" | 1/4" | 0.8775 | 0 | 27 | 8.45 | 8.45 | 1.06 |
| 1/4" | 5/16" | 1.053 | 0 | 28 | 8.45 | 8.45 | 1.06 |
| 3/8" | 3/8" | 1.287 | 0 | 21 | 8.45 | 8.45 | 1.06 |

*Requires 15 psi minimum operating pressure differential to ensure proper closing in a closed loop system.

Solenoid Enclosure: IP 65

**Angle Body available upon request



Type 105 Directly Operated

End Connections: NPT Threaded sockets; Adhesive sockets
Control Function: Normally Closed
Voltage: AC: 24,110,120,210,230/240/50Hz
Body Material: PVC, PVDF
Max Working Medium Temperature: PVC:140°F; PVDF:212°F
Seal Material: FPM, Teflon®, EPDM
Ambient Temperature Range: 32°-104°F
Coil: Continuous duty Class A

| Pipe Size | Orifice Size | C _v Flow Factor | Operating Pressure | | Watt Rating | | Weight (lbs.) |
|-----------|--------------|----------------------------|--------------------|-----|-------------|----|---------------|
| | | | Min | Max | AC | DC | |
| 1/4" | 1/4" | 1.05 | 0 | 85 | 8.25 | - | 0.77 |
| 3/8" | 3/8" | 2.28 | 0 | 21 | 8.25 | - | 0.77 |

† Other voltages and frequencies on request

Solenoid Enclosure: IP 65



Type 202 Directly Operated

End Connections: NPT Threaded sockets
Control Function: Normally Closed
Voltage: AC:24,42,48,115,230V/50Hz, 24,110,230V/60Hz; DC:12,24,48,110V
Body Material: PVC, PVDF
Max Working Medium Temperature: PVC:140°F; PVDF:212°F
Seal Material: FPM, Teflon®, EPDM
Ambient Temperature Range: 32°-104°F
Coil: Continuous duty Class A

| Pipe Size | Orifice Size | C _v Flowfactor | Operating Pressure*(psi) | | Watt Rating | | Weight (lbs.) |
|-----------|--------------|---------------------------|--------------------------|-----|-------------|-------|---------------|
| | | | Min | Max | AC | DC | |
| 3/8" | 3/8" | 1.989 | 0 | 28 | 15.25 | 15.25 | 2.64 |
| 1/2" | 1/2" | 2.691 | 0 | 14 | 15.25 | 15.25 | 2.64 |

*Requires 15 psi minimum operating pressure differential to ensure proper closing in a closed loop system.

Solenoid Enclosure: IP 65

**Angle Body available upon request



Type 205 Directly Operated

End Connections: NPT Threaded sockets
Control Function: Normally Closed
Voltage: AC:24,42,48,115,230V/50Hz; DC:12,24,48,110V
Body Material: PVC, PVDF
Max Working Medium Temperature: PVC:140°F; PVDF:212°F
Seal Material: FPM, Teflon®, EPDM
Ambient Temperature Range: 32°-104°F
Coil: Continuous duty Class A

| Pipe Size | Orifice Size | C _v Flowfactor | Operating Pressure (psi) | | Watt Rating | | Weight (lbs.) |
|-----------|--------------|---------------------------|--------------------------|-----|-------------|-------|---------------|
| | | | Min | Max | AC | DC | |
| 3/8" | 3/8" | 2.8 | 0 | 85 | 9.85 | 11.05 | 1.87 |
| 1/2" | 1/2" | 4.09 | 0 | 28 | 9.85 | 11.05 | 1.98 |
| 3/4" | 3/4" | 5.26 | 0 | 14 | 9.85 | 11.05 | 1.98 |
| 1" | 1" | 11.7 | 0 | 14 | 30.95 | 23.05 | 6.17 |
| 1-1/4" | 1-1/4" | 17.55 | 0 | 14 | 30.95 | 23.05 | 6.17 |
| 1-1/2" | 1-1/2" | 22.23 | 0 | 2.8 | 30.95 | 23.05 | 7.93 |
| 2" | 2" | 29.25 | 0 | 2.8 | 30.95 | 23.05 | 7.93 |

Solenoid Enclosure: IP 65

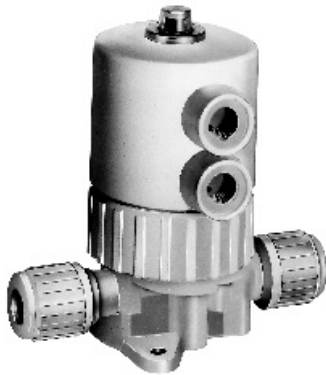


Type 225 Servo-Operated

End Connections: IPS Spigots
Control Function: Normally Closed
Voltage: AC:24,42,48,110,230,240V/50Hz; DC:12,24,48,110V
Body Material: PVC, PVDF
Max Working Medium Temperature: PVC:140°F; PVDF:212°F
Seal Material: FPM, Teflon®, EPDM
Ambient Temperature Range: 32°-104°F
Coil: Continuous duty Class A

| Pipe Size | Orifice Size | C _v Flowfactor | Operating Pressure (psi) | | Watt Rating | | Weight (lbs.) |
|-----------|--------------|---------------------------|--------------------------|-----|-------------|-------|---------------|
| | | | Min | Max | AC | DC | |
| 1/2" | 1/2" | 4.09 | 7.5 | 85 | 11.05 | 11.05 | 1.98 |
| 3/4" | 3/4" | 5.26 | 7.5 | 85 | 11.05 | 11.05 | 1.98 |
| 1" | 1" | 11.7 | 0 | 85 | 23.05 | 23.05 | 6.17 |
| 1-1/4" | 1-1/4" | 17.55 | 0 | 85 | 23.05 | 23.05 | 6.17 |
| 1-1/2" | 1-1/2" | 22.23 | 0 | 85 | 23.05 | 23.05 | 7.94 |
| 2" | 2" | 29.25 | 0 | 85 | 23.05 | 23.05 | 7.94 |

Solenoid Enclosure: IP 65



Cleanstar® C60 HPW Pneumatically Operated†

| Nominal Size Inch | Pressure Range psi | Control Pressure†† psi | Control Function | End Connections | Body Material | Seal Material |
|----------------------|-----------------------|---------------------------|---------------------|------------------------------|-------------------|------------------|
| 1/4" | 0-90 | 60-100 | Normally open | Flare with PVDF nut | PFA; | TFM™PTFE |
| 3/8" | 0-90 | 60-100 | Normally closed | Flare with PFA nut | Exterior actuator | |
| 1/2" | 0-90 | 60-100 | Double acting | IPS welded spigot* | parts in PVDF. | |
| 3/4" | 0-90 | 60-100 | | Spacesaver* | | |
| 1" | 0-90 | 60-100 | | True Union and spigot ends** | | |
| 1/2" | 0-90 | 60-100 | | IR Fusion spigot | PVDF | TFM™PTFE |

*Available for 1/4" and 3/8" upon request

**Only for PVDF valve body

† 1/2"-1" Also available in T-Body

†† Varies with control function



Cleanstar® C67 HPW Manually Operated†

| Nominal Size Inch | Pressure Range psi | End Connections | Body Material | Seal Material |
|----------------------|-----------------------|------------------------------|-------------------|------------------|
| 1/4" | 0-90 | Flare with PVDF nut | PFA; | TFM™PTFE |
| 3/8" | 0-90 | Flare with PFA nut | Exterior actuator | |
| 1/2" | 0-90 | IPS welded spigot* | parts in PVDF. | |
| 3/4" | 0-90 | Spacesaver* | | |
| 1" | 0-90 | True Union and spigot ends** | | |
| 1/2" | 0-90 | IR Fusion spigot | PVDF | TFM™PTFE |

*Available for 1/4" and 3/8" upon request

**Only for PVDF valve body

† 1/2"-1" Also available in T-Body



Cleanstar® C67/C60 HPW Zero Static T-Valves Sizes†

| Flare x Flare-Tube Size | | *Welded Spigots-Pipe Size | |
|-------------------------|--------|---------------------------|--------|
| Main | Branch | Main | Branch |
| 1/2" | 1/2" | 1/2" | 1/2" |
| 3/4" | 1/2" | | |
| 1" | 1/2" | | |
| 3/4" | 3/4" | | |
| 1" | 3/4" | | |

| Flare x Spacesaver-Tube Size | | *Welded Spigots-Pipe Size x Flare Tube Size | |
|------------------------------|--------|---|--------|
| Main | Branch | Main | Branch |
| 1/2" | 1/2" | 1/2" | 1/2" |
| 3/4" | 1/2" | 1/2" | 3/4" |
| 3/4" | 3/4" | | |

*Available on request only

† Specialty sizes available upon request