

Series 600 - EPDM Seat



Ductile Iron Body, 316 SS, Lug Type Butterfly Valve

Description

1/4 turn, ten-position locking lever handle operated, epoxy coated ductile iron body, stainless steel disc and stem with EPDM seat butterfly valve.

Features

- Seat to flange seal eliminates the need for flange gaskets
- Lug-type connection
- Dead-end service (single flange)
- Epoxy coated finish
- Ideal for mounting pneumatic/electrical actuators
- Square stem for direct mount
- ISO 5211 mounting pad
- Vacuum service
- Pressure rating: 225 WOG
- Temperature rating: 225°F

Approvals

- API 609 and 598
- MSS SP-67
- ANSI B16.5

Accessories

- 10 position locking lever handle
- Gear operators
- Electrical and pneumatic actuators

Warranty

The Company, for a period of one year from the date of shipment, warrants each product or system of its own manufacture to the original purchaser to be free from defects in material and workmanship under normal use, service and maintenance.



Lug-EPDM

Architect/Engineer approval

Job Name _____ Date _____
Model Specified _____ Quantity _____
Variations Specified _____
Customer/Wholesaler _____
Contractor _____
Architect _____

Note: Information subject to change without notice.



Jomar International Ltd.
7243 Miller Drive
Warren, MI 48092
Phone: 800-325-5690
Fax: 800-628-4194
www.jomar.com

© Copyright 2006 Printed in U.S.A.
Lug-EPDM
0406

Series 600 - EPDM Seat

Ductile Iron Body, 316 SS, Lug Type Butterfly Valve



Description

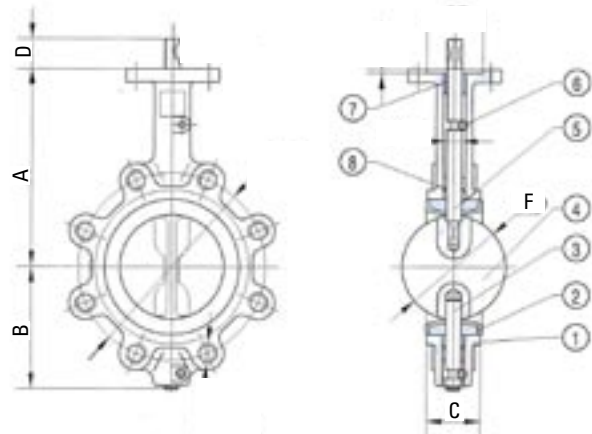
1/4 turn, ten-position locking lever handle operated, epoxy coated ductile iron body, stainless steel disc and stem with EPDM seat butterfly valve.

Dimensions in Inches

| Computer No. | Valve Size | A | B | C | D | E | F | G | Weight | CV |
|--------------|------------|-------|------|------|------|-----|-------|------|--------|------|
| 600-02DSEB | 2" | 6.34 | 3.15 | 1.65 | 1.20 | .35 | 2.07 | 1.97 | 8.38 | 135 |
| 600-0212DSEB | 2-1/2" | 6.89 | 3.50 | 1.76 | 1.20 | .35 | 2.54 | 1.97 | 9.26 | 220 |
| 600-03DSEB | 3" | 7.13 | 3.74 | 1.78 | 1.20 | .35 | 3.10 | 1.97 | 10.36 | 302 |
| 600-04DSEB | 4" | 7.87 | 4.49 | 2.05 | 1.20 | .43 | 4.10 | 2.76 | 19.84 | 600 |
| 600-05DSEB | 5" | 8.39 | 5.00 | 2.14 | 1.20 | .55 | 4.86 | 2.76 | 24.03 | 1022 |
| 600-06DSEB | 6" | 8.90 | 5.47 | 2.20 | 1.20 | .55 | 6.13 | 2.76 | 31.31 | 1579 |
| 600-08DSEB | 8" | 10.24 | 6.89 | 2.39 | 1.77 | .67 | 7.98 | 4.02 | 40.12 | 3136 |
| 600-10DSEB | 10" | 11.50 | 7.99 | 2.58 | 1.77 | .87 | 9.87 | 4.02 | 59.08 | 5340 |
| 600-12DSEB | 12" | 13.27 | 9.53 | 3.03 | 1.77 | .87 | 11.88 | 4.02 | 88.18 | 8250 |

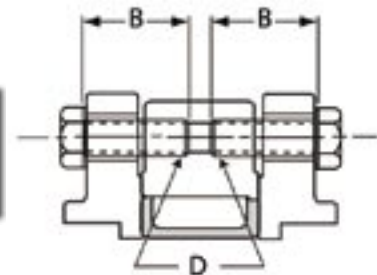
Material Specification

| No. | Part Name | Materials |
|-----|--------------|---------------------|
| 1 | Body | Ductile Iron |
| 2 | Seat | EPDM |
| 3 | Lower Stem | 416 Stainless Steel |
| 4 | Disc | 316 Stainless Steel |
| 5 | Upper Stem | 416 Stainless Steel |
| 6 | Locating Pin | Cast Steel |
| 7 | Bushing | PTFE |
| 8 | O-ring | EPDM |



| Size | Flow in Gpm @ 1PSI P @ Various Disc Angles | | | | | | | | | Full 90°Open |
|------|--|-----|-----|------|------|------|------|------|------|--------------|
| | 10° | 20° | 30° | 40° | 50° | 60° | 70° | 80° | | |
| 2" | 0.1 | 5 | 12 | 24 | 45 | 64 | 90 | 125 | 135 | |
| 2.5" | 0.2 | 8 | 20 | 37 | 65 | 98 | 144 | 204 | 220 | |
| 3" | 0.3 | 12 | 22 | 39 | 70 | 116 | 183 | 275 | 302 | |
| 4" | 0.5 | 17 | 36 | 78 | 139 | 230 | 364 | 546 | 600 | |
| 5" | 0.8 | 29 | 61 | 133 | 237 | 392 | 620 | 930 | 1022 | |
| 6" | 2 | 45 | 95 | 205 | 366 | 605 | 958 | 1437 | 1579 | |
| 8" | 3 | 89 | 188 | 408 | 727 | 1202 | 1903 | 2854 | 3136 | |
| 10" | 4 | 151 | 320 | 694 | 1237 | 2047 | 3240 | 4859 | 5340 | |
| 12" | 5 | 234 | 495 | 1072 | 1911 | 3162 | 5005 | 7505 | 8250 | |

| DIM | 2" | 2-1/2" | 3" | 4" | 5" | 6" | 8" | 10" | 12" |
|-----|---------------|---------------|---------------|---------------|---------------|---------------|---------------|--------------|--------------|
| B | 1-1/2 | 1-1/2 | 1-1/2 | 1-3/4 | 1-3/4 | 2 | 2 | 2-1/4 | 2-1/2 |
| D | 5/8 -11UNC | 5/8 -11UNC | 5/8 -11UNC | 5/8 -11UNC | 3/4 -10UNC | 3/4 -10UNC | 3/4 -10UNC | 7/8 -9UNC | 7/8 -9UNC |



Note: Information subject to change without notice.



Jomar International Ltd.
7243 Miller Drive
Warren, MI 48092
Phone: 800-325-5690
Fax: 800-628-4194
www.jomar.com

© Copyright 2006 Printed in U.S.A.
Lug-EPDM
0406