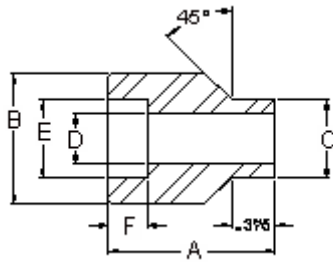


# Penn Machine

## Class 3000 Socket Welding Couplet



**PENN CATALOG FIG NO. 13018**

<b>PIPE SIZE</b>	<b>1/4</b>	<b>3/8</b>	<b>1/2</b>	<b>3/4</b>	<b>1</b>	<b>1-1/4</b>	<b>1-1/2</b>	<b>2</b>	<b>2-1/2</b>	<b>3</b>	<b>4</b>
Dimension A	1.188	1.188	1.312	1.375	1.688	1.875	2.000	2.250	2.500	2.750	3.000
Dimension B	.938	1.063	1.312	1.500	1.813	2.188	2.500	3.000	3.625	4.250	5.500
Dimension C	.688	.812	.938	1.063	1.312	1.688	1.938	2.438	2.875	3.500	4.500
Dimension D	23/64	1/2	5/8	53/64	1-3/64	1-3/8	1-39/64	2-1/16	2-15/32	3-1/16	4-1/32
Dimension E	.560	.693	.859	1.071	1.335	1.682	1.922	2.410	2.910	3.536	4.545
Dimension F	.406	.406	.406	.532	.532	.532	.532	.656	.656	.656	1.000
Approx. Wt. (lbs)	.150	.180	.262	.296	.537	.932	1.199	1.783	2.988	4.100	4.780

[Fitting catalog](#) | 
 [Product catalog](#) | 
 [Request quote/information](#) | 
 [Home](#)

*Web site created by Penn Machine. Send questions or comments to [James Friant](#).*