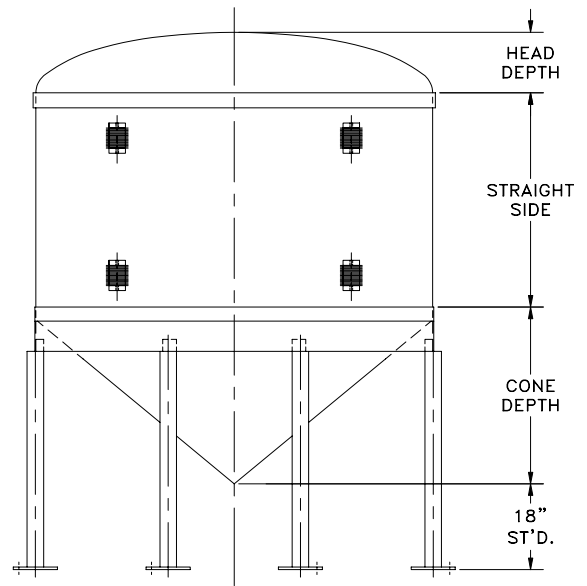


C-OKV



C-CKV

CAPACITIES (U.S. Gallons)

Tank Nominal DIAMETER (Inches)	ONE Section				STRAIGHT SIDE LENGTH (Inches)								TWO Section			
	24	30	36	42	48	54	60	66	72	78	84	90	96	108	120	
	24	54	65	77	89	100	112	124	135	147	158	170	181	193	216	240
30	88	107	126	144	163	182	201	220	239	259	278	298	317	350	388	
36	112	136	161	186	211	236	262	288	314	340	366	393	419	457	508	
42	182	218	254	290	327	363	400	436	473	511	548	585	623	686	759	
48	219	264	309	354	400	446	491	538	584	631	677	725	772	849	940	
54	326	386	445	505	564	624	683	743	802	862	921	981	1040	1159	1278	
60	359	428	498	568	638	709	779	850	922	993	1065	1137	1210	1355	1502	
66	518	607	696	785	873	962	1051	1140	1229	1318	1407	1495	1584	1762	1940	
72	560	663	765	868	971	1075	1179	1283	1388	1493	1598	1704	1810	2023	2238	
84	833	973	1114	1256	1398	1540	1683	1827	1971	2115	2260	2406	2552	2845	3140	
90	1073	1239	1404	1569	1734	1900	2065	2230	2395	2561	2726	2891	3056	3387	3717	
96	1152	1335	1519	1704	1889	2075	2261	2448	2635	2822	3010	3199	3388	3767	4149	
108	1486	1412	1939	2166	2394	2622	2850	3079	3309	3539	3769	4000	4231	4695	5161	
120	2012	2300	2590	2880	3170	3462	3753	4046	4339	4633	4927	5222	5517	6110	6706	
132	2693	3048	3404	3759	4115	4470	4826	5181	5536	5892	6247	6603	6958	7669	8380	
138	2792	3174	3557	3940	4323	4707	5092	5478	5863	6250	6637	7025	7413	8191	8972	
144	3204	3627	4050	4475	4900	5326	5753	6181	6609	7039	7469	7900	8332	9198	10068	
156	4136	4633	5129	5626	6122	6619	7115	7612	8108	8604	9101	9597	10094	11087	12080	
168	4695	5246	5799	6352	6906	7461	8016	8573	9130	9687	10246	10806	11459	12489	13614	

DIA. Inches	Gallons Per Inch	Head Depth	Cone Depth	Cone Capacity
24	1.93	4	12	8
30	3.14	5	15	15
36	4.19	6	15	16
42	6.06	7	21	41
48	7.58	8	21	43
54	9.90	9	27	89
60	11.80	10	27	85
66	14.80	11	33	163
72	17.46	12	33	156
84	24.02	14	39	276
90	27.53	15	45	413
96	31.66	16	45	422
108	38.72	18	51	586
120	49.49	20	58	863
132	59.22	22	66	1303
138	64.82	23	65	1271
144	72.39	24	70	1522
156	82.68	26	78	2151
168	93.08	28	82	2496

General Notes:

1. Diameters smaller than 72" are Contact Molded per ASTM D-4097.
2. Diameters 72" and larger are Filament Wound per ASTM D-3299.
3. Carbon steel primed pipe legs with floor pads.
4. Heavy powder coated carbon steel lifting lugs, as required for handling.
5. Standard cone angle is 90° at the apex (Included Angle).

OPTIONAL FEATURES

- FRP Skirt Support
- Integral FLAT Top Head
- Flat Cover for Open Top (1 pc. / 2 pc. / 3 pc.)
- 30°, 45° & 60° Cone Angles

CAPACITIES (U.S. Gallons)

Tank Nominal DIAMETER (Inches)	ONE Section				STRAIGHT SIDE LENGTH (Inches)								TWO Section			
	132	144	156	168	180	192	204	216	228	240	252	264	276	288	312	
	24	263	286													
30	426	464	503	542	581	620										
36	560	612	664	717	770	823										
42	832	906	981	1055	1130	1205										
48	1033	1126	1219	1312	1407	1501										
54	1397	1516	1635	1754	1873	1992	2111	2230	2349	2468	2587	2706	2825	2944	3182	
60	1616	1759	1902	2046	2190	2335	2480	2626	2773	2920						
66	2117	2295	2473	2651	2828	3006	3184	3362	3539	3717	3895	4072	4250	4428	4783	
72	2455	2673	2830	3041	3252	3465	3678	3891	4106	4321	4537	4754	4972	5190		
84	3437	3737	3955	4245	4536	4828	5120	5414	5709	6005	6302	6599	6898	7198		
90	4048	4378	4709	5039	5370	5700	6031	6361	6692	7022	7353	7683	8014	8344	9005	
96	4532	4918	5305	5694	6086	6479	6874	7113	7494	7876	8259	8643	9028	9414	10189	
108	5628	6098	6569	7042	7517	7994	8472	8953	9270	9736	10203	10671	11140	11610	12552	
120	7304	7904	8507	9112	9720	10331	10944	11559	11953	12549	13146	13745	14345	14946	16151	
132	9091	9802	10513	11224	11935	12645	13356	14067	14778	15489	16200	16911	17622	18333	19754	
138	9754	10540	11327	12117	12909	13704	14501	15112	15892	16673	17455	18238	19023	19809	21384	
144	10941	11817	12697	13580	14466	15356	16249	16697	17743	18614	19486	20360	21235	22112	23872	
156	13073	14065	15058	16051	17044	18037	19030	20023	21016	22009	23002	23994	24987	25980	27966	
168	14743	15876	17011	18149	19116	20236	21358	22482	23607	24733	25862	26991	28123	29256	31526	