

Specification and Data Sheet

Models Roller 3 and Roller 5

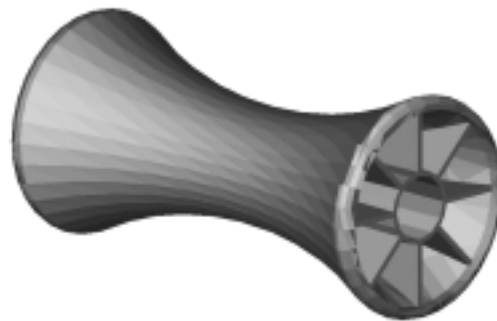
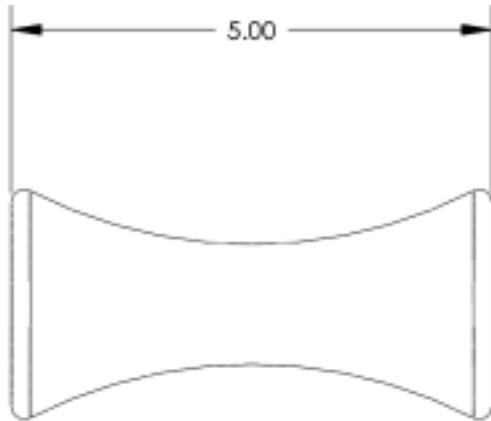
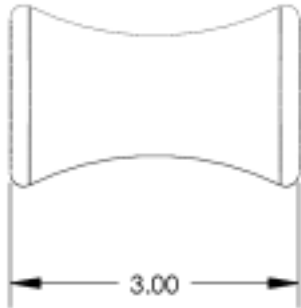
- Product Name:** PILLOW BLOCK PIPESTAND MODELS ROLLER 3 AND ROLLER 5. **NOTE:** MIRO Models Roller 3 and Roller 5 are the same rollers used on MIRO pipestands and may be purchased separately for other uses.
- Manufacturer:** MIRO INDUSTRIES, INC., 2700 South 900 West, Salt Lake City, Utah 84119 Phone (800) 768-6978
Fax (800) 440-7958
- Product Description:**

Model No Roller 3. The Model Roller 3 is a heavy duty support roller made of polycarbonate resin. The dimensions of the roller are 3" in length, the diameter of the roller ends is 1-7/8", the diameter of the roller at the center of the bearing surface is 1-1/4", the diameter of the shaft opening is 5/8", and the bearing surface of the roller has 3" radius arch.

Model No Roller 5. The Model Roller 5 is a heavy duty support roller made of polycarbonate resin. The dimensions of the roller are 5" in length, the diameter of the roller ends is 2-7/16", the diameter of the roller at the center of the bearing surface is 1-1/4" , the diameter of the shaft opening is 5/8", and the bearing surface of the roller has 5" radius arch.
- Compatibility:** The rollers are recommended and are compatible for use with all current types of metal, plastics and decking and with all commonly used built-up and single-ply roofing membranes where roof-mounted pipes occur.
- Load Weight:** Maximum load weight may not exceed 150 lbs. for the Model 3 Roller and the Model 5 Roller.
- Composition and Materials:** Both rollers consist of three components: (1) a concave bearing surface with a radius of 3" for the Roller 3 and a radius of 5" for the Roller 5, (2) Both rollers have shaft openings of 5/8", and (3) the interior support structure consists of eight heavy duty walls radiating from the center shaft to bearing surface.
- Size:**

Roller 3 is 3" in length, the roller ends have a 1-7/8" diameter, has a 3" radius arch on the bearing surface, has a 5/8" shaft opening, requires a clearance of at least 15/16" from the center of the shaft opening, has a diameter of 1-1/4" at the center of the bearing surface, and loads on the bearing surface will be 5/16" above the supporting shaft.

Roller 5 is 5" in length, the roller ends have a 2-7/16" diameter, has a 5" radius arch on the bearing surface, has a 5/8" shaft opening, requires a clearance of at least 1-7/32" from the center of the shaft opening, has a diameter of 1-1/4" at the center of the bearing surface, and loads on the bearing surface will be 5/16" above the supporting shaft.
- Installation:** Slide the roller over an appropriate shaft of metal or heavy duty material and properly support each end of the shaft in a horizontal configuration so the roller will operate properly. Proper engineering on the load limits of the supporting shaft and the structure that supports the shaft are essential.
- Availability:** Rollers are marketed throughout the United States through representatives and distributors.
- Maintenance:** Normally maintenance is not required. Semi-annual inspection is required to check pipestand position and set pipe alignment, weight distribution, and improper installation which may cause pipestand damage or failure.
- Technical Services:** Please call MIRO INDUSTRIES, INC.: (800) 768-6978.
www.miroind.com for technical information and for graphic and for CAD drawing downloads.



This document, attachments, and all of the information therein are the property of MIRO Industries, Inc. The information contained is loaned, subject to return upon demand, and is not to be used directly or indirectly in any way detrimental to our interest. Further, the information contained therein shall not be used, in whole or in part, except when allowed by written authorization from MIRO Industries, Inc.

Copyright MIRO Industries, Inc. 2003.

Rollers