

CleanStar® C60/C67 HPW with PFA T-body 1/2"-3/4"

Ultra pure PFA diaphragm valve 2/2 way, manually operated (C67) and pneumatically operated (C60) with zero deadleg PFA T-valve body

- T-body design minimizes “dead legs” reducing “chemical holdout” and rinse times.
- Eliminates the need for tee fittings reducing associated pressure loss and overall cost of installation.
- Requires less mounting space, ideal for compact distribution boxes

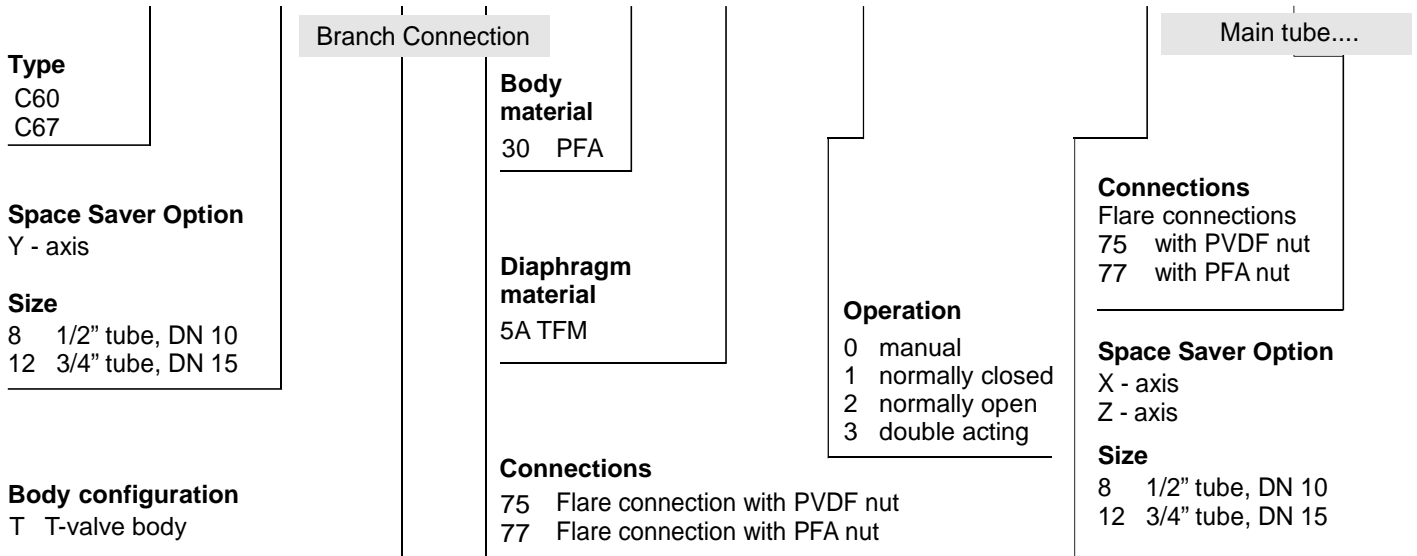
Technical details refer to data sheet C60/C67 with straight through body.

Main tube				Branch/valve				Cv-Value (gal/min)*
Ref. no.	Size	Connections	Ref. no.	Ref. no.	Size	Connections	Ref. no.	
12	3/4" tube	Flare-connection	75 a. 77	12	3/4" tube	Flare-connection	75 a. 77	4.3
12	3/4" tube	Flare-connection	75 a. 77	8	1/2" tube	Flare-connection	75 a. 77	2.4
8	1/2" tube	Flare-connection	75 a. 77	8	1/2" tube	Flare-connection	75 a. 77	2.0

* with water at 68° F, Δ p = 1 psi

How to order

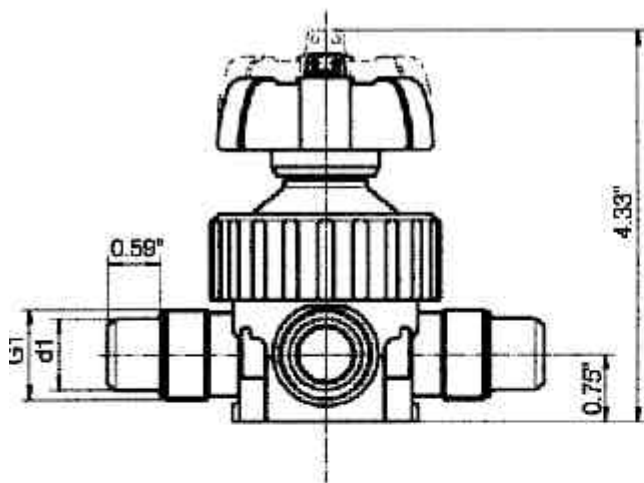
C67 / Y8 / T / 75 / 30 / 5A / 1 / HPW / X8 / 75



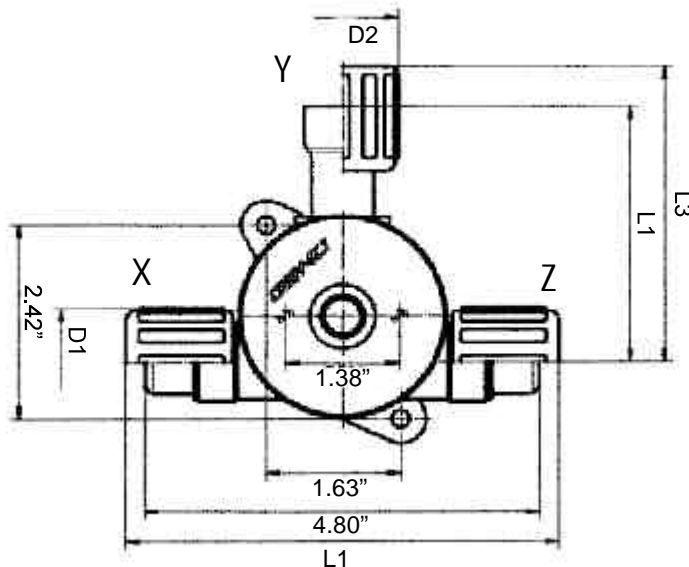
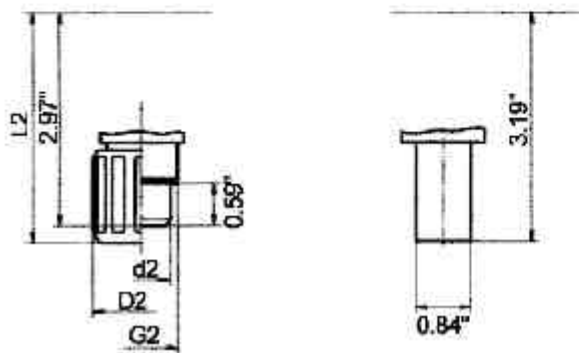
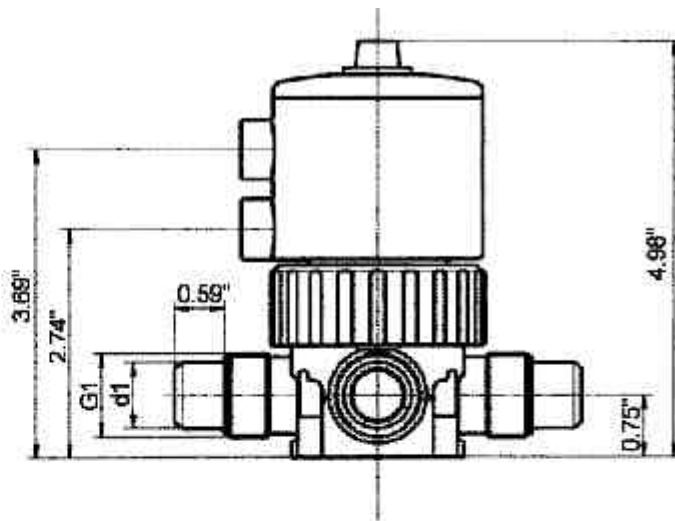
Dimensions

Flare connections (Ref. No. 75 and 77)

C 67

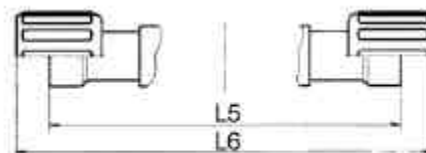
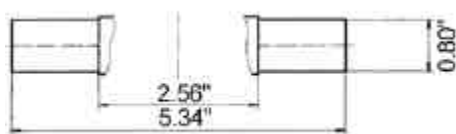


C 60



IPS welded spigot connections (on request)

Space saver (pos. X, Y and/or Z)



Size	d1	d2	D1	D2	L1	L2	L3	L4	L5	L6	G1	G2	CV Value (gal/min)
3/4"-3/4"	0.80"	0.80"	1.36"	1.36"	5.28"	3.21"	3.68"	3.19"	5.31"	6.34"	1"-20	1"-20	4.3
1/2"-3/4"	0.80"	0.55"	1.36"	1.06"	5.28"	3.17"	3.44"	2.97"	5.31"	6.34"	1"-20	3/4"-20	2.4
1/2"-1/2"	0.55"	0.55"	1.06"	1.06"	5.20"	3.13"	3.44"	2.97"	4.80"	5.75"	3/4"-20	3/4"-20	2.0