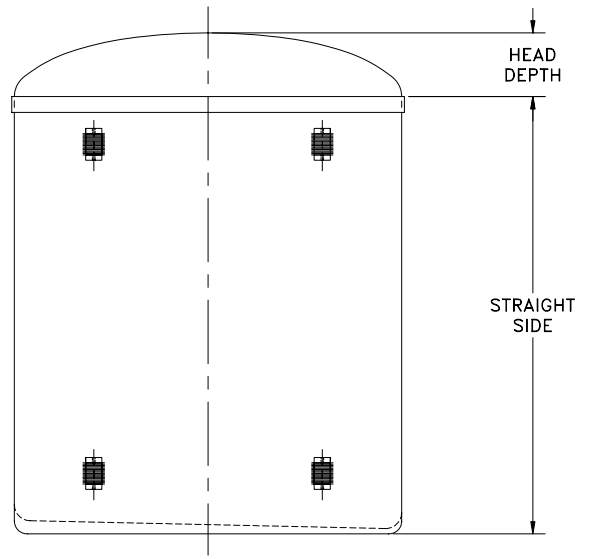


C-OSV-I



C-CSV-I

CAPACITIES (U.S. Gallons)

	ONE Section				STRAIGHT SIDE LENGTH (Inches)								TWO Section			
	24	30	36	42	48	54	60	66	72	78	84	90	96	108	120	
24	43	54	66	78	89	101	113	124	136	147	159	170	182	205	229	
30	69	87	106	125	143	162	181	200	220	239	258	278	297	330	368	
36	89	114	139	163	189	214	239	265	291	317	343	370	397	435	486	
42	132	168	204	240	276	312	349	386	423	460	497	534	572	635	708	
48	164	209	254	299	344	390	436	482	528	575	622	669	716	793	885	
54	221	280	340	399	459	518	578	637	697	756	816	875	935	1054	1172	
60	254	323	393	463	533	603	674	745	816	887	959	1031	1104	1249	1396	
66	328	417	506	595	684	773	862	950	1039	1128	1217	1306	1395	1572	1750	
72	373	475	577	680	783	887	991	1095	1199	1304	1410	1515	1621	1835	2049	
84	511	651	792	934	1076	1218	1361	1504	1648	1792	1937	2082	2228	2521	2816	
90	605	770	935	1101	1266	1431	1596	1762	1927	2092	2257	2423	2588	2918	3249	
96	666	850	1034	1218	1403	1589	1775	1961	2148	2335	2523	2712	2901	3280	3661	
108	817	1044	1270	1497	1725	1952	2181	2410	2639	2869	3099	3329	3561	4024	4489	
120	1035	1324	1613	1903	2193	2484	2776	3068	3361	3654	3948	4243	4538	5131	5726	
132	1275	1631	1986	2342	2697	3053	3408	3764	4119	4474	4830	5185	5541	6252	6963	
138	1360	1742	2124	2507	2890	3274	3659	4044	4430	4816	5203	5590	5978	6756	7536	
144	1500	1922	2346	2770	3194	3620	4047	4474	4902	5331	5761	6192	6623	7489	8358	
156	1753	2249	2746	3242	3739	4235	4732	5228	5725	6221	6718	7214	7710	8703	9696	
168	1930	2481	3033	3586	4140	4694	5250	5805	6362	6920	7478	8037	8597	9719	10844	

DIA. Inches	Gallons Per Inch	Head Depth
24	1.93	4
30	3.14	5
36	4.19	6
42	6.06	7
48	7.58	8
54	9.90	9
60	11.80	10
66	14.80	11
72	17.46	12
84	24.02	14
90	27.53	15
96	31.66	16
108	38.72	18
120	49.49	20
132	59.22	22
138	64.82	23
144	72.39	24
156	82.68	26
168	93.08	28

**General Notes:**

1. Diameters smaller than 72" are Contact Molded per ASTM D-4097.
2. Diameters 72" and larger are Filament Wound per ASTM D-3299.
3. Heavy powder coated carbon steel lifting lugs, as required for handling.
4. ¼" / ft. internal sloped bottom standard.

OPTIONAL FEATURES

- Integral FLAT Top Head
- Flat Cover for Open Top (1 pc. / 2 pc. / 3 pc.)

**CAPACITIES (U.S. Gallons)**

Tank Nominal DIAMETER (Inches)	STRAIGHT SIDE LENGTH (Inches)															
	ONE Section												TWO Section			
	132	144	168	192	204	216	240	264	288	312	336	360	384	408	444	
24	252	276														
30	406	445	522	600												
36	537	589	694	800												
42	782	856	1004	1154												
48	977	1070	1257	1445												
54	1291	1410	1648	1886	2005	2124	2362	2600	2838	3076	3314	3552	3790	4028	4385	
60	1511	1653	1940	2229	2374	2520	2814									
66	1928	2106	2461	2817	2994	3172	3527	3883	4238	4594	4949	5305	5660	6016	6549	
72	2266	2483	2852	3276	3489	3703	4132	4565	5001							
84	3113	3412	3922	4504	4797	5090	5681	6275	6873							
90	3579	3910	4571	5232	5562	5893	6554	7214	7875	8536	9197	9858	10519	11180	12172	
96	4044	4429	5205	5989	6384	6626	7388	8155	8925	9700	10478	11260	12046	12837		
108	4957	5426	6369	7320	7799	8279	9065	9999	10938	11880	12826	13775	14728	15685		
120	6323	6923	8131	9348	9960	10575	11569	12764	13965	15170	16380	17596	18816	20042		
132	7673	8384	9806	11228	11939	12650	14072	15493	16915	18337	19759	21181	22602	24024	26157	
138	8318	9103	10679	12265	13061	13676	15237	16082	18372	19947	21526	23110	24698	26291		
144	9230	10106	11867	13642	14534	15430	16904	18649	20401	22160	23925	25697	27476	29262	31953	
156	10689	11682	13668	15654	16647	17640	19625	21611	23597	25583	27569	29554	31540	33526	36505	
168	11972	13104	15376	17467	18589	19712	21963	24220	26484	28754	31030					