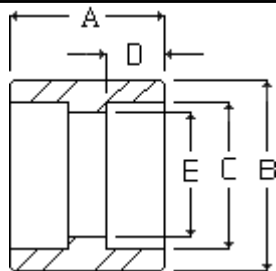


Penn Machine

Class 3000 Socketweld Coupling

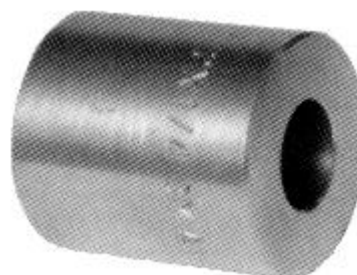
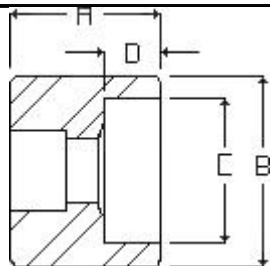


PENN CATALOG F2002 FIG NO. 13007
ASME-B16.11-2001

NOMINAL PIPE SIZE	1/8"	1/4"	3/8"	1/2"	3/4"	1"	1-1/4"	1-1/2"	2"	2-1/2"	3"	3-1/2"	4"
"A"	1-1/8	1-1/8	1-1/8	1-1/4	1-7/16	1-9/16	1-9/16	1-9/16	2-1/16	2-1/16	2-1/16	2-5/16	2-5/16
"B"	3/4	7/8	1-1/16	1-1/4	1-1/2	1-13/16	2-1/4	2-1/2	3	3-5/8	4-5/16	5	5-1/2
"C"	.426	.560	.693	.859	1.071	1.335	1.682	1.922	2.410	2.910	3.536	4.036	4.545
"D"	7/16	7/16	7/16	7/16	17/32	17/32	17/32	17/32	21/32	21/32	21/32	25/32	25/32
"E"	.269	.364	.493	.622	.824	1.049	1.380	1.610	2.067	2.469	3.068	3.548	4.026
APPROX. WEIGHT	.09	.11	.14	.28	.40	.65	1.05	1.23	2.05	3.12	3.83	6.67	7.13

Penn Machine

Class 3000 Socketweld Reducer



PENN CATALOG F2002 FIG NO. 13008
ASME-B16.11-2001

NOMINAL PIPE SIZE	1/8"	1/4"	3/8"	1/2"	3/4"	1"	1-1/4"	1-1/2"	2"	2-1/2"	3"	3-1/2"	4"
"A"	1-1/8	1-1/8	1-1/8	1-1/4	1-7/16	1-9/16	1-9/16	1-9/16	2-1/16	2-1/16	2-1/16	2-5/16	2-5/16
"B"	3/4	7/8	1-1/16	1-1/4	1-1/2	1-13/16	2-1/4	2-1/2	3	3-5/8	4-5/16	5	5-1/2
"C"	.426	.560	.693	.859	1.071	1.335	1.682	1.922	2.410	2.910	3.536	4.036	4.545
"D"	7/16	7/16	7/16	7/16	17/32	17/32	17/32	17/32	21/32	21/32	21/32	25/32	25/32
APPROX. WEIGHT	.05	.09	.13	.34	.35	.52	1.01	1.13	2.03	2.79	4.43	6.83	7.86

*The waterway bore of the reducer is determined by the schedule of the small end.

[Fitting catalog](#) | [Product catalog](#) | [Request quote/information](#) | [Home](#)

Web site created by Penn Machine. Send questions or comments to [James Friant](#).