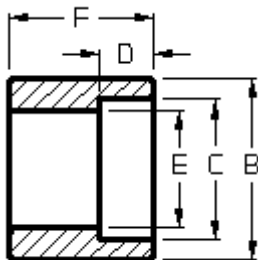


Penn Machine

Class 6000 Socketweld Half Coupling

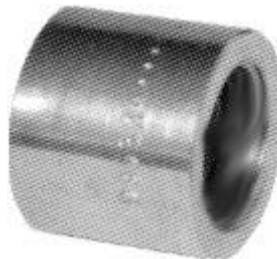
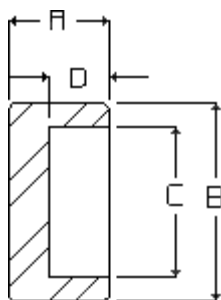


PENN CATALOG F2002 FIG NO. 16009
ASME-B16.11-2001

NOMINAL PIPE SIZE	1/8"	1/4"	3/8"	1/2"	3/4"	1"	1-1/4"	1-1/2"	2"	2-1/2"	3"	4"
"B"	7/8	1	1-1/4	1-1/2	1-3/4	2	2-1/2	2-3/4	3-5/8	4-1/4	5	6
"C"	.426	.560	.693	.859	1.071	1.335	1.682	1.922	2.410	2.910	3.536	4.545
"D"	7/16	7/16	7/16	7/16	17/32	17/32	17/32	17/32	21/32	21/32	21/32	25/32
"E"	.157	.250	.359	.466	.614	.815	1.160	1.338	1.689	2.125	2.625	3.438
"F"	1-1/16	1-1/16	1-1/8	1-5/16	1-1/2	1-11/16	1-3/4	1-13/16	2-5/16	2-3/8	2-7/16	2-11/16
APPROX. WEIGHT	.18	.16	.29	.08	.12	1.08	1.61	2.58	4.74	6.36	7.06	18.35

Penn Machine

Class 6000 Socketweld Cap



PENN CATALOG F2002 FIG NO. 16010
ASME-B16.11-2001

NOMINAL PIPE SIZE	1/8"	1/4"	3/8"	1/2"	3/4"	1"	1-1/4"	1-1/2"	2"	2-1/2"	3"	4"
"A"	3/4	3/4	13/16	13/16	1	1-1/8	1-1/8	1-3/16	1-1/2	1-9/16	1-11/16	2
"B"	7/8	1	1-1/4	1-1/2	1-3/4	2	2-1/2	2-3/4	3-5/8	4-1/4	5	6
"C"	0.426	0.560	0.693	0.859	1.071	1.335	1.682	1.922	2.410	2.910	3.536	4.545
"D"	7/16	7/16	7/16	7/16	17/32	17/32	17/32	17/32	21/32	21/32	21/32	25/32
APPROX. Wt	0.13	0.17	0.27	0.43	0.58	1.18	1.41	2.16	3.69	5.24	7.71	14.94