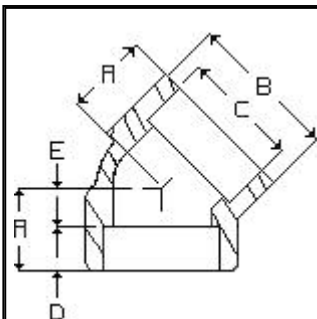


Penn Machine

Class 3000 Socketweld 45



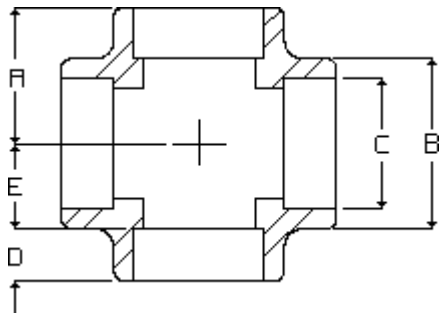
PENN CATALOG F2002 FIG NO. 13003

ASME-B16.11-2001

NOMINAL PIPE SIZE	1/8"	1/4"	3/8"	1/2"	3/4"	1"	1-1/4"	1-1/2"	2"	2-1/2"	3"	4"
"A"	3/4	3/4	3/4	7/8	1	1-1/8	1-5/16	1-3/8	1-11/16	2-1/16	2-1/2	3-1/8
"B"	7/8	7/8	1-1/16	1-5/16	1-1/2	1-13/16	2-3/16	2-1/2	3	4	4-3/4	5-7/8
"C"	.426	.560	.693	.859	1.071	1.335	1.682	1.922	2.410	2.910	3.536	4.545
"D"	7/16	7/16	7/16	7/16	9/16	9/16	5/8	9/16	11/16	15/16	1-1/4	1-1/2
"E"	5/16	5/16	5/16	7/16	1/2	9/16	11/16	13/16	1	1-1/8	1-1/4	1-5/8
APPROX. WEIGHT	.26	.24	.18	.40	.55	.89	1.23	1.76	3.02	7.62	12.49	19.34

Penn Machine

Class 3000 Socketweld Cross



PENN CATALOG F2002 FIG NO. 13004

ASME-B16.11-2001

[Click here for the reducing fitting correct ordering practice](#)

NOMINAL PIPE SIZE	1/8"	1/4"	3/8"	1/2"	3/4"	1"	1-1/4"	1-1/2"	2"	2-1/2"	3"	4"
"A"	31/32	31/32	31/32	1-1/8	1-5/16	1-1/2	1-3/4	2	2-3/8	3-1/4	3-3/4	4-3/16
"B"	1-1/16	1-1/16	1-1/16	1-5/16	1-1/2	1-13/16	2-3/16	2-1/2	3	4	4-3/4	5-7/8
"C"	.426	.560	.693	.859	1.071	1.335	1.682	1.922	2.410	2.910	3.536	4.545
"D"	17/32	17/32	7/16	9/16	9/16	5/8	11/16	3/4	7/8	1-5/8	1-1/2	1-9/16
"E"	7/16	7/16	17/32	5/8	3/4	7/8	1-1/16	1-1/4	1-1/2	1-5/8	2-1/4	2-5/8
APPROX. WEIGHT	.47	.40	.35	.73	.96	1.53	2.32	3.59	5.50	14.98	17.56	30.84

Web site created by Penn Machine. Send questions or comments to [James Friant](#).