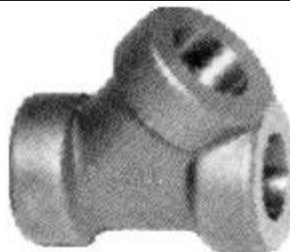
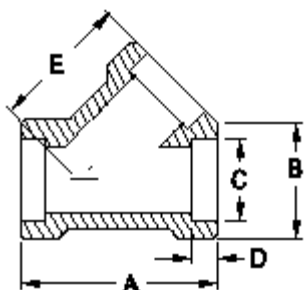


Penn Machine

Class 6000 Socketweld Lateral



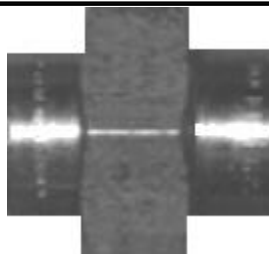
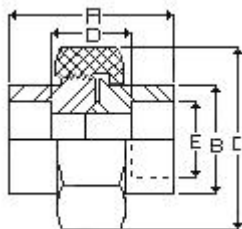
PENN CATALOG F2002 FIG NO. 16006

[Click here for the reducing fitting correct ordering practice](#)

Nominal Pipe Size	1/8"	1/4"	3/8"	1/2"	3/4"	1"	1-1/4"	1-1/2"	2"	2-1/2"
Dimension A	2-1/2	2-1/2	2-1/2	2-1/2	3	3-1/2	4	4-1/2	6	7-1/2
Dimension B	1-1/2	1-1/2	1-1/2	1-1/2	1-3/4	2	2-7/16	2-3/4	3-5/16	4
Dimension C	.426	.560	.693	.859	1.071	1.335	1.682	1.922	2.410	2.910
Dimension D	13/32	13/32	13/32	13/32	17/32	17/32	17/32	17/32	21/32	21/32
Dimension E	1-3/4	1-3/4	1-3/4	1-3/4	2-1/8	2-1/2	2-13/16	3-3/16	4-3/8	5-5/16
Approx. Wt. (lbs)	1.45	1.31	1.18	1.04	1.66	2.70	3.84	5.57	11.63	19.10

Penn Machine

Class 6000 Socketweld Union - Pipe Type



PENN CATALOG F2002 FIG NO. 16017

Nominal Pipe Size	1/8"	1/4"	3/8"	1/2"	3/4"	1"	1-1/4"	1-1/2"	2"	2-1/2"
Dimension A	1-11/16	1-13/16	1-15/16	2-1/4	2-7/16	2-13/16	3	3-3/8	4-1/32	4-5/16
Dimension B	55/64	1-1/32	1-15/64	1-15/32	1-51/64	2-11/64	2-7/16	2-31/32	3-39/64	4-5/16
Dimension C	1-3/8	1-5/8	1-13/16	2-1/4	2-9/16	3-1/16	3-7/16	4-1/16	4-7/8	5-11/16
Dimension D	13/16	13/16	15/16	15/16	1-1/8	1-3/16	1-7/16	1-1/2	1-5/8	2-1/4
Dimension E	.426	.560	.693	.859	1.071	1.335	1.682	1.922	2.410	2.910
APPROX. WEIGHT	.48	.56	.75	1.35	2.01	3.17	3.92	6.60	10.12	14.00

[Fitting catalog](#) | [Product catalog](#) | [Request quote/information](#) | [Home](#)

Web site created by Penn Machine. Send questions or comments to [James Friant](#).