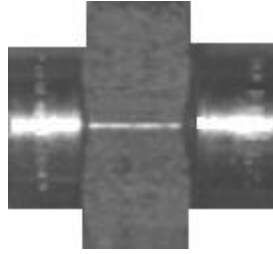
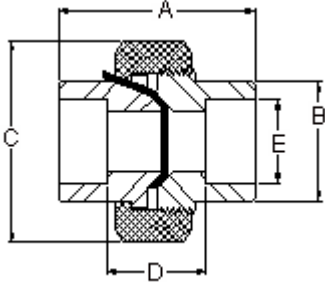


Penn Machine

Class 3000 Socketweld Union (ORIFICE - TAB) TYPE



PENN CATALOG FIG NO. 13038

All A105, 304/L, and 316/L receive a 316 type plate. Other material receive an identical material plate to the union material.

[Orifice Hole Flow Rate Chart](#)
(click here)

NOMINAL PIPE SIZE	1/8"	1/4"	3/8"	1/2"	3/4"	1"	1-1/4"	1-1/2"	2"
"A"	1-3/4	1-3/4	1-7/8	2	2-5/16	2-1/2	2-7/8	3-1/16	3-7/16
"B"	55/64	55/64	1-1/32	1-15/64	1-15/32	1-51/64	2-11/64	2-7/16	2-31/32
"C"	1-3/8	1-3/8	1-5/8	1-13/16	2-1/4	2-9/16	3-1/16	3-7/16	4-1/16
"D"	13/16	13/16	15/16	15/16	1-1/8	1-3/16	1-7/16	1-1/2	1-5/8
"E"	.426	.560	.693	.859	1.071	1.335	1.682	1.922	2.410
APPROX. WEIGHT	.40	.38	.52	.73	1.19	1.66	2.66	3.42	5.36

[Fitting catalog](#) | [Product catalog](#) | [Request quote/information](#) | [Home](#)

Web site created by Penn Machine. Send questions or comments to [James Friant](#).