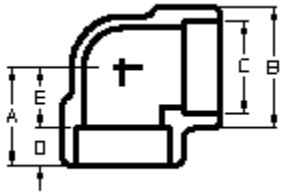


# Penn Machine

## Class 3000 Socketweld 90



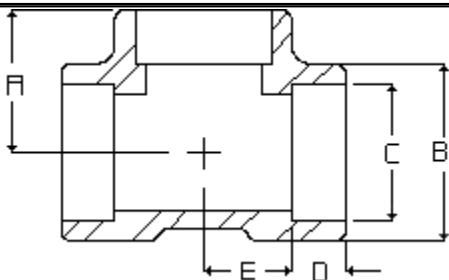
PENN CATALOG F2002 FIG NO. 13001  
ASME-B16.11-2001

[Click here for the reducing fitting correct ordering practice](#)

NOMINAL PIPE SIZE	1/8"	1/4"	3/8"	1/2"	3/4"	1"	1-1/4"	1-1/2"	2"	2-1/2"	3"	4"
"A"	7/8	7/8	31/32	1-1/8	1-5/16	1-1/2	1-3/4	2	2-3/8	3	3-3/8	4-3/16
"B"	7/8	7/8	1-1/16	1-5/16	1-1/2	1-13/16	2-3/16	2-1/2	3	3-5/8	4-5/16	5-7/8
"C"	.426	.560	.693	.859	1.071	1.335	1.682	1.922	2.410	2.910	3.536	4.545
"D"	7/16	7/16	7/16	1/2	9/16	5/8	11/16	3/4	7/8	1-3/8	1-1/8	1-9/16
"E"	7/16	7/16	17/32	5/8	3/4	7/8	1-1/16	1-1/4	1-1/2	1-5/8	2-1/4	2-5/8
APPROX. WEIGHT	.20	.17	.24	.48	.68	1.06	1.72	2.33	3.88	7.34	11.61	22.47

# Penn Machine

## Class 3000 Socketweld Tee



PENN CATALOG F2002 FIG NO. 13002  
ASME-B16.11-2001

[Click here for the reducing fitting correct ordering practice](#)

NOMINAL PIPE SIZE	1/8"	1/4"	3/8"	1/2"	3/4"	1"	1-1/4"	1-1/2"	2"	2-1/2"	3"	4"
"A"	7/8	7/8	31/32	1-1/8	1-5/16	1-1/2	1-3/4	2	2-3/8	3	3-3/8	4-3/16
"B"	7/8	7/8	1-1/16	1-5/16	1-1/2	1-13/16	2-3/16	2-1/2	3	3-5/8	4-5/16	5-7/8
"C"	.426	.560	.693	.859	1.071	1.335	1.682	1.922	2.410	2.910	3.536	4.545
"D"	7/16	7/16	7/16	1/2	9/16	5/8	11/16	3/4	7/8	1-3/8	1-1/8	1-9/16
"E"	7/16	7/16	17/32	5/8	3/4	7/8	1-1/16	1-1/4	1-1/2	1-5/8	2-1/4	2-5/8
APPROX. Wt WEIGHT	.25	.22	.31	.62	.88	1.30	2.00	2.99	4.60	8.49	13.85	27.14

[Fitting catalog](#) | [Product catalog](#) | [Request quote/information](#) | [Home](#)

Web site created by Penn Machine. Send questions or comments to [James Friant](#).

