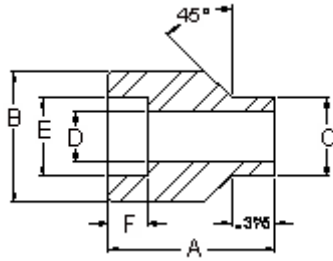


# Penn Machine

## Class 6000 Socket Welding Couplet



PENN CATALOG FIG NO. 16018

PIPE SIZE	1/8	1/4	3/8	1/2	3/4	1	1-1/4	1-1/2	2	2-1/2	3	4
Dimension A	1.188	1.188	1.188	1.312	1.375	1.688	1.875	2.000	2.250	2.500	2.750	3.000
Dimension B	.875	1.000	1.250	1.500	1.750	2.250	2.500	3.000	3.625	4.250	5.000	6.250
Dimension C	.688	.688	.812	.938	1.063	1.312	1.688	1.938	2.438	2.875	3.500	4.500
Dimension D	17/64	23/64	1/2	5/8	53/64	1-3/64	1-3/8	1-39/64	2-1/16	2-15/32	3-1/16	4-1/32
Dimension E	.426	.560	.693	.859	1.071	1.335	1.682	1.922	2.410	2.910	3.536	4.545
Dimension F	.406	.406	.406	.406	.532	.532	.532	.532	.656	.656	.656	1.000
Approx. Wt. (lbs)	.706	.734	.781	.337	.427	.921	1.190	2.911	3.282	3.691	4.236	4.891

[Fitting catalog](#) | 
 [Product catalog](#) | 
 [Request quote/information](#) | 
 [Home](#)

*Web site created by Penn Machine. Send questions or comments to [James Friant](#).*