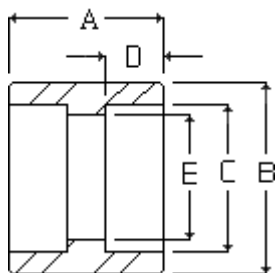


Penn Machine

Class 9000 Socketweld Coupling

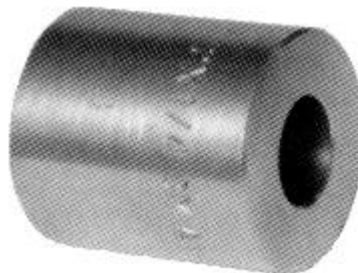
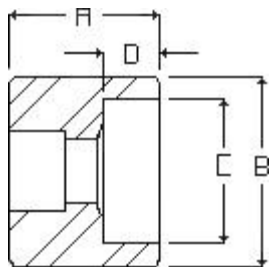


PENN CATALOG F2002 FIG NO. 19007
ASME-B16.11-2001

NOMINAL PIPE SIZE	1/2"	3/4"	1"	1-1/4"	1-1/2"	2"	2-1/2"	3"	3-1/2"	4"
"A"	1-1/4	1-7/16	1-9/16	1-9/16	1-9/16	2-1/16	2-1/16	2-1/16	2-5/16	2-5/16
"B"	1-3/4	2	2-1/2	2-3/4	3	3-5/8	4-1/2	5-1/2	6	6-1/2
"C"	.859	1.071	1.335	1.682	1.922	2.410	2.910	3.536	4.036	4.545
"D"	7/16	17/32	17/32	17/32	17/32	21/32	21/32	21/32	25/32	25/32
"E"	.252	.434	.599	.896	1.100	1.503	1.771	2.300	2.728	3.438
APPROX. WEIGHT	.76	1.40	1.69	2.86	4.62	7.54	10.56	12.10	14.62	16.21

Penn Machine

Class 9000 Socketweld Reducer



PENN CATALOG F2002 FIG NO. 19008
ASME-B16.11-2001

NOMINAL PIPE SIZE	1/2"	3/4"	1"	1-1/4"	1-1/2"	2"	2-1/2"	3"	3-1/2"	4"
"A"	1-1/4	1-7/16	1-9/16	1-9/16	1-9/16	2-1/16	2-1/16	2-1/16	2-5/16	2-5/16
"B"	1-3/4	2	2-1/2	2-3/4	3	3-5/8	4-1/2	5-1/2	6	6-1/2
"C"	.859	1.071	1.335	1.682	1.922	2.410	2.910	3.536	4.036	4.545
"D"	7/16	17/32	17/32	17/32	17/32	21/32	21/32	21/32	25/32	25/32
"E"	.252	.434	.599	.896	1.100	1.503	1.771	2.300	2.728	3.438
APPROX. WEIGHT	.76	1.40	1.69	2.86	4.62	7.54	10.56	12.10	14.62	16.21

*The waterway bore of the reducer is determined by the schedule of the small end.

[Fitting catalog](#) | [Product catalog](#) | [Request quote/information](#) | [Home](#)

Web site created by Penn Machine. Send questions or comments to [James Friant](#).