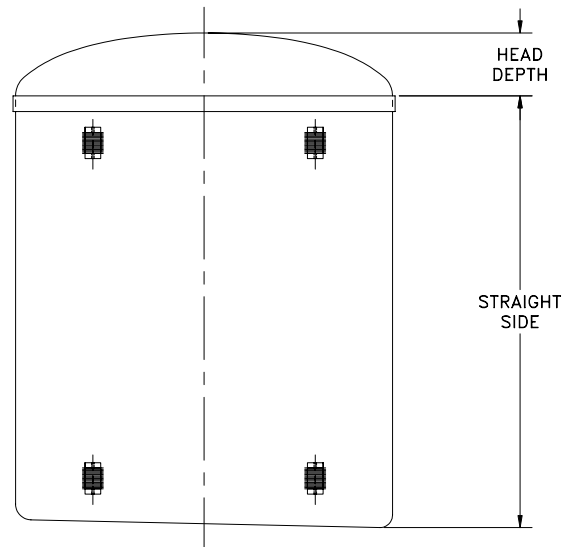


C-OSV-X



C-CSV-X

CAPACITIES (U.S. Gallons)

	ONE Section				STRAIGHT SIDE LENGTH (Inches)								TWO Section		
	24	30	36	42	48	54	60	66	72	78	84	90	96	108	120
24	45	56	68	80	91	103	115	126	138	149	161	172	184	207	231
30	72	90	109	128	147	166	185	204	223	242	262	281	300	333	371
36	93	118	143	168	193	218	244	269	295	321	348	374	401	439	490
42	138	174	210	246	282	318	355	392	429	466	503	541	578	641	714
48	172	216	261	307	352	398	444	490	536	583	630	677	724	801	893
54	231	290	350	409	469	528	588	647	707	766	825	885	944	1063	1182
60	266	335	404	474	544	615	686	757	828	899	971	1043	1116	1262	1335
66	343	432	521	610	699	788	876	965	1054	1143	1232	1321	1410	1587	1765
72	390	492	594	697	800	904	1008	1112	1217	1322	1427	1533	1639	1852	2067
84	534	675	816	957	1099	1242	1385	1528	1672	1816	1961	2106	2252	2545	2841
90	632	798	963	1128	1293	1459	1624	1789	1954	2120	2285	2450	2615	2946	3276
96	697	880	1064	1249	1434	1620	1806	1992	2179	2367	2555	2743	2932	3311	3693
108	855	1081	1308	1535	1763	1990	2219	2448	2677	2907	3137	3368	3599	4063	4528
120	1083	1372	1661	1951	2242	2533	2824	3117	3410	3703	3997	4292	4588	5180	5775
132	1335	1690	1986	2401	2756	3112	3467	3823	4178	4534	4889	5245	5600	6311	7022
138	1424	1806	2188	2571	2954	3338	3723	4108	4494	4880	5267	5655	6043	6821	7601
144	1570	1993	2416	2840	3265	3691	4118	4545	4974	5403	5833	6264	6695	7561	8430
156	1836	2332	2829	3325	3822	4318	4814	5311	5807	6304	6800	7297	7793	8786	9779
168	2022	2573	3125	3678	4232	4787	5342	5898	6455	7013	7571	8130	8690	9813	10938

Tank Nominal DIAMETER (Inches)

DIA. Inches	Gallons Per Inch	Head Depth
24	1.93	4
30	3.14	5
36	4.19	6
42	6.06	7
48	7.58	8
54	9.90	9
60	11.80	10
66	14.80	11
72	17.46	12
84	24.02	14
90	27.53	15
96	31.66	16
108	38.72	18
120	49.49	20
132	59.22	22
138	64.82	23
144	72.39	24
156	82.68	26
168	93.08	28

General Notes:

1. Diameters smaller than 72" are Contact Molded per ASTM D-4097.
2. Diameters 72" and larger are Filament Wound per ASTM D-3299.
3. Heavy powder coated carbon steel lifting lugs, as required for handling.
4. ¼" / ft. external sloped bottom standard.

OPTIONAL FEATURES

- Integral FLAT Top Head
- Flat Cover for Open Top (1 pc. / 2 pc. / 3 pc.)

CAPACITIES (U.S. Gallons)

Tank Nominal DIAMETER (Inches)	STRAIGHT SIDE LENGTH (Inches)														
	ONE Section												TWO Section		
	132	144	168	192	204	216	240	264	288	312	336	360	384	408	444
24	254	278													
30	409	448	525	603											
36	542	593	698	805											
42	788	862	1010	1160											
48	985	1078	1264	1453											
54	1301	1420	1658	1896	2015	2134	2372	2610	2848	3086	3324	3562	3800	4038	4395
60	1522	1665	1952	2241	2386	2532	2826								
66	1943	2120	2476	2831	3009	3187	3542	3898	4253	4609	4964	5319	5675	6030	6564
72	2284	2501	2870	3294	3507	3720	4150	4583	5019						
84	3138	3437	3946	4528	4821	5115	5705	6300	6898						
90	3607	3937	4598	5259	5590	5920	6581	7242	7903	8564	9225	9886	10547	11208	12199
96	4076	4461	5238	6022	6417	6657	7420	8187	8957	9732	10510	11293	12079	12870	
108	4996	5465	6409	7360	7839	8319	9104	10038	10977	11919	12865	13815	14768	15725	
120	6373	6973	8181	9399	10012	10627	11619	12814	14015	15220	16431	17646	18867	20093	
132	7733	8444	9865	11287	11998	12709	14131	15553	16974	18396	19818	21240	22662	24083	26216
138	8384	9168	10745	12331	13128	13741	15302	16867	18438	20012	21592	23176	24765	26358	
144	9303	10179	11941	13716	14609	15505	16976	18722	20474	22233	23999	25771	27550	29336	32028
156	10772	11765	13751	15736	16729	17722	19708	21694	23680	25666	27651	29637	31623	33609	36588
168	12067	13198	15471	17561	18682	19806	22057	24314	26578	28848	31125				