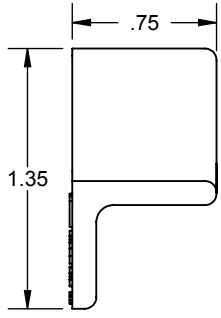
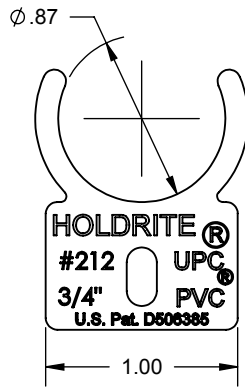
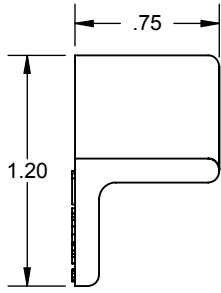
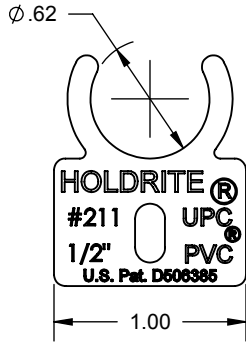
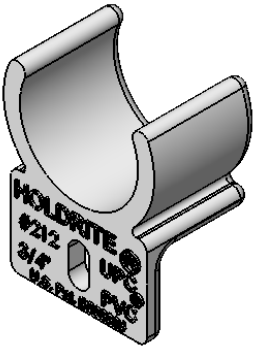
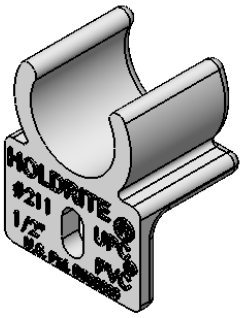


PRODUCT SPECIFICATION DRAWING HOLDRITE® SNAP CLAMP™ #211 & #212



Model #211 (1/2" CTS)

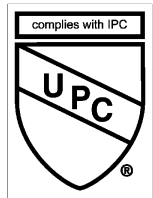
ALL DIMENSIONS IN INCHES

Model #212 (3/4" CTS)

The HOLDRITE® #211 and #212 Snap Clamps™ are flame retardant and secure Copper, PEX and CPVC. Glueable when used with CPVC. Mounts to Stout™ or EZ-Strut™ brackets or directly to framing. Available for 1/2" and 3/4" tube sizes. (S) series clamps are 25/50 Flame Rated and non-glueable.

Product Information:

- Material: PVC Fire Retardant, white, UL94V-0
- Compatible with PVC, CPVC, PEX and Copper
- Glueable when used with CPVC tubing
- Ability to hold CPVC (or PEX and Copper) piping in horizontal or vertical position
- Mountable to HOLDRITE® Stout Bracket™, #170 Series Brackets or directly to metal or wood framing
- U.S. Patent D506385
- UPC / IPC / IAPMO listed
- Temperature range: -10°F to +120°F



THIS INFORMATION IS PROPRIETARY TO HUBBARD ENTERPRISES AND IS SUBJECT TO CHANGE WITHOUT NOTICE. ANY REPRODUCTION IN PART OR WHOLE WITHOUT THE WRITTEN PERMISSION OF HUBBARD ENTERPRISES IS PROHIBITED.

••••HUBBARD ENTERPRISES••••
HOLDRITE®
"Converting Makeshift Methods into Engineered Solutions"

Product Submittal	
Job Name:	
Date:	
Part Number:	Qty:
Architect / Owner:	
Contractor:	
Notes:	