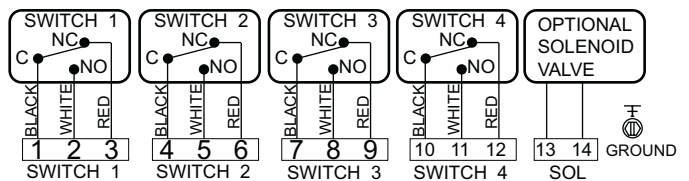
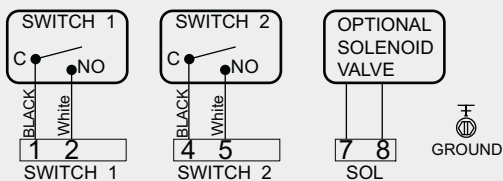


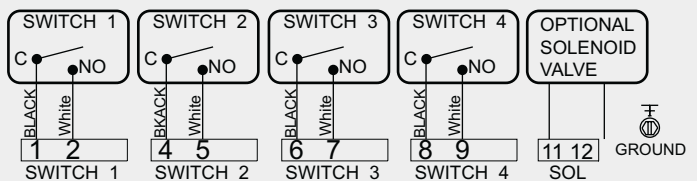
2 SPDT switches (Form C)
Cherry Mechanical
Tungsten TTL
Rhodium TTL



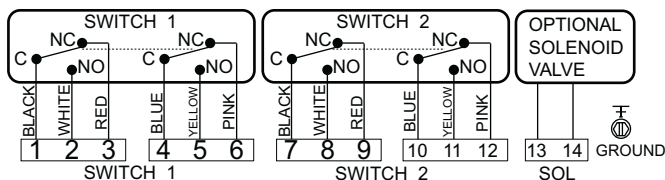
4 SPDT switches (Form C)
Cherry Mechanical
Tungsten TTL
Rhodium TTL



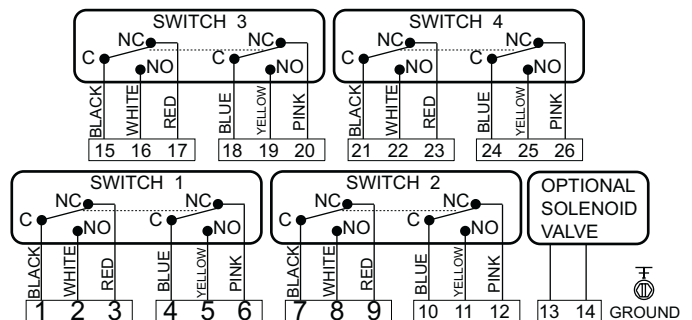
2 SPST switches (Form A)
Bifurcated TTL



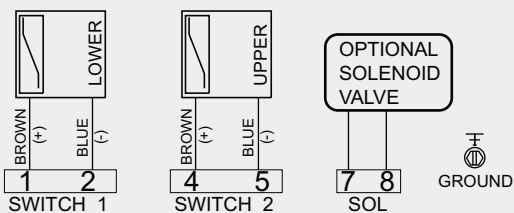
4 SPST switches (Form A)
Bifurcated TTL



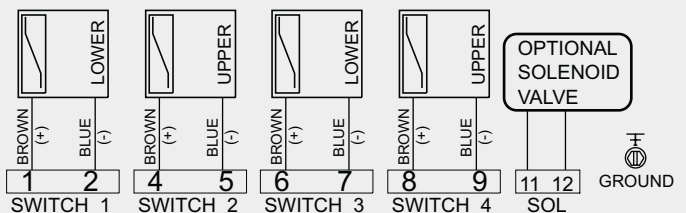
2 DPDT switches (Form ZZ)
ITW



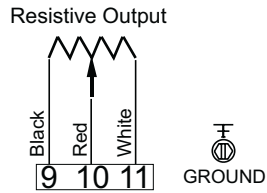
4 DPDT switches (Form ZZ)
ITW



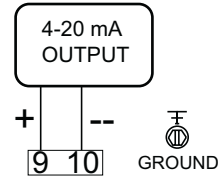
2 - 2-wire Inductive Sensors
any type



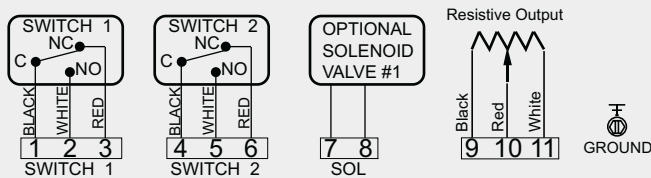
4 - 2-wire Inductive Sensors
any type



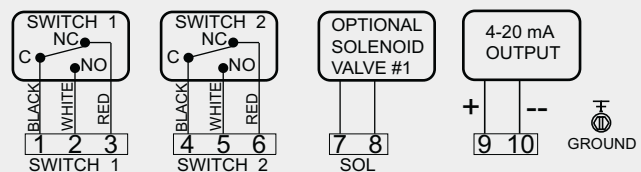
Resistive Output
0 - 1000 ohm
0 - 50 ohm



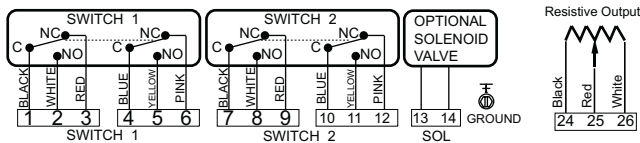
Current Output
4 - 20 mA



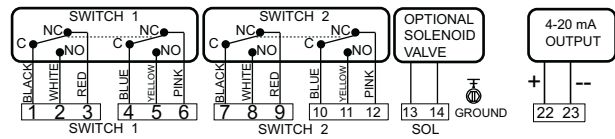
**2 SPDT switches (Form C)
with Resistive Output**
Cherry Mechanical
Tungsten TTL
Rhodium TTL



**2 SPDT switches (Form C)
with Current Output**
Cherry Mechanical
Tungsten TTL
Rhodium TTL



**2 DPDT switches (Form ZZ)
with Resistive Output**
ITW



**2 DPDT switches (Form ZZ)
with Current Output**
ITW

for additional wiring diagrams for products not listed here, please contact Moniteur