

## ROVVER™ 125

### Fast, Portable Solution for Environmental Pipe Inspections.

The ROVVER® 125 is the most portable and versatile sewer inspection crawler on the market today. It is ideally suited for many applications due to its modular design and its ability to inspect inside pipes with diameters ranging from 6 to 36 inches. It is the smallest crawler in its class, thereby giving it the ability to pass through restricted pipe, large offsets, and protruding pipe taps. The ROVVER's remote pendant gives you the ability to control focus, lighting, zoom, camera orientation, steering and travel direction.

#### Features/Benefits:

- Modularity allows a single system to view 6" to 36" lines
- Small profile allows for long runs and panning/tilting in 6" to 36" Ø pipe
- Quick-disconnect allows for easy use, low maintenance and time savings
- Handheld pendant for control of lighting, focus, speed, pan/tilt, zoom and steering
- Rack-mount control unit integrates into existing vehicle
- Waterproof for damp and submerged areas (crawler/camera rated IP68; reel rated IP63)
- NRTL listed and labelled for Safe Use in Sewer Applications
- Standard inclinometer

Rugged, Mobile and Easy-to-Use. The ROVVER 125 Robotic Crawler. Put the Power of ROVVER 125 in Your Hands.

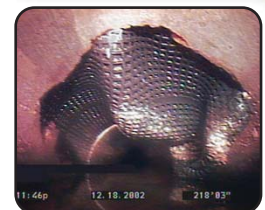


*Above: Short wheelbase and steerability allow ROVVER 125 to travel with ease through 45 degree sewer inverts.*

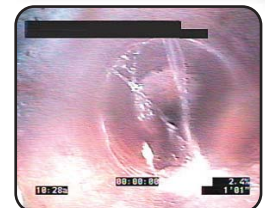
*Below: One simple tool is all you need to swap out the ROVVER 125's cameras and cables.*



•• Location of Hidden/Buried Stormwater Vault



•• Failed Outer Pipe Patch



•• Severe Water Infiltration

# Specifications

\*Specifications subject to change without notice.

## Crawler

<b>Dimensions</b>	305mm (12") x 121mm (4.75") x 95mm (3.75")
<b>Weight</b>	7.25 kg (16 lb)
<b>Material</b>	Brass, nickel plated, stainless steel, aluminum
<b>Rating</b>	IP68
<b>Drive</b>	Twin 20W DC motors, 6-wheel drive, steerable

## Camera

<b>Type</b>	0.5" color CCD camera, 1 lux sensitivity
<b>Resolution</b>	380,000 pixels, 420 HTV lines resolution
<b>Zoom</b>	optional 40:1 (10X optical; 4X digital)
<b>Lens</b>	4mm, f1.2, remote focus
<b>Lens FOV</b>	68° x 90° x 100° (VxHxD)
<b>Focus</b>	6mm (0.25") to infinity (remotely adjustable)
<b>Dimensions</b>	2" dia. x 2.9" long
<b>Rating</b>	IP68

## Cable Drum

<b>Cable</b>	Standard Cable: 7 mm dia, 0.052 lb/ft Heavy-Duty Cable: 8.5 mm dia, 0.065 lb/ft <i>Both are multi-conductor with 227 kg (500 lb) Kevlar® strength member and polyurethane outer jacket. Both come in 101m (330'), 150m (492') and 200m (660') standard lengths, or custom lengths to 200m (660').</i>
<b>Drum</b>	Portable manual slip-ring cable drum with various cable lengths, or automatic motorized cable reel with level wind feature
<b>Rating</b>	IP63

## Control Unit

<b>Size (dxwxh)</b>	420mm (16.5") x 343mm (13.5") x 292mm (11.5")
<b>Weight</b>	18kg (40 lb)
<b>Pendant Control</b>	Left/right steering, pan/tilt/zoom, crawler speed, light intensity, modular slide-in cards for upgrades/accessories
<b>Power</b>	110 Vac, 60 Hz
<b>Output</b>	NTSC composite (EIA-170A) video (PAL available); 19" rackmount controller is available

