

Survey Pipelines Safely At a Fraction the Cost & Time...

Distance
Measurement



Collapsible Carbon
Fiber Pole

Inspect pipelines, manholes and tanks from street level with the patented QuickView zoom inspection camera. Contractors use it to survey pipe condition before bidding services, and to document completed work. Municipalities use it to identify and prioritize maintenance issues, avoid confined-space entry, and inspect hard-to-reach infrastructure. Departments of transportation use it to assess culvert and storm pipe condition with minimal exposure to traffic. With 216:1 zoom, onscreen distance measurement and HID lamps, QuickView captures video as far as 250' down lines 8-60" dia.

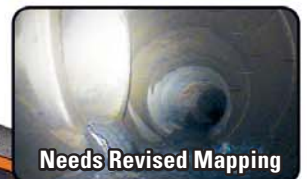
QuickView helps
identify and prioritize
maintenance issues.



Satisfactory



Needs More Inspection



Needs Revised Mapping



Needs Cleaning



Needs Rehab



Joystick Controls for Fingertip Access
to Focus, Zoom, Measurement, Menu
and Illumination Functions.

Xenon HID
Lamps

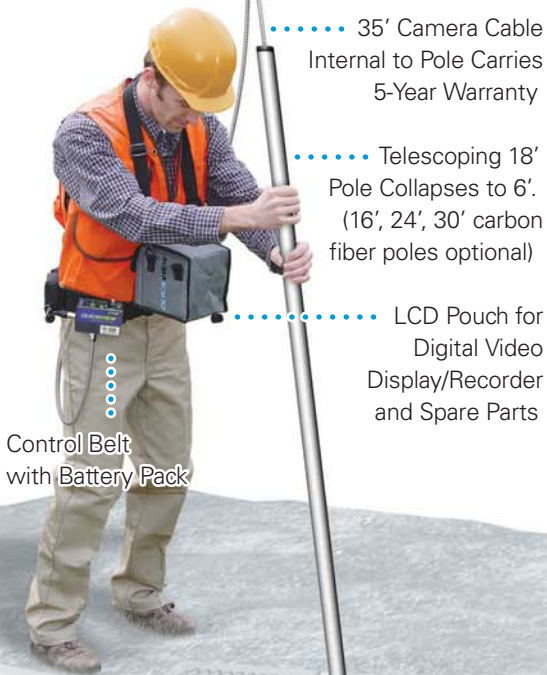
Patented Targeting
Fixture for Even,
Stable Illumination

QuickView and the QuickView logo are trademarks of EnviroSight, LLC.
©2006 EnviroSight, LLC. All rights reserved.
QuickView carries patent no. 6,538,732.

QUICKVIEW[®]

PATENTED TECHNOLOGY ZOOM INSPECTION CAMERA

System



..... 35' Camera Cable
Internal to Pole Carries
5-Year Warranty

..... Telescoping 18'
Pole Collapses to 6'.
(16', 24', 30' carbon
fiber poles optional)

..... LCD Pouch for
Digital Video
Display/Recorder
and Spare Parts

Control Belt
with Battery Pack

Advanced Measurement & Camera Options:

- Calibration system for improved accuracy
- Specific measurement of in-focus objects (90-100% accuracy in 20'-160' range).
- Burst-Mode Video: Higher sensitivity/contrast for greater focus and measurement accuracy.
- Variable focus speed (coarse, medium, fine) for greater focus and measurement accuracy.
- Center blanking for enhanced sidewall exposure.
- 20-character video text writing using joystick.
- Object measurement.

Targeting Fixture

HID Lamps

Camera Head

Also:

- Instruction manual
- Shipping case
- Longer pole lengths and cable available
- Optional 20' long 12V power cable



Lighting

- Lamp Rating:** 2 × 10W high-intensity discharge lamps
- Reflector Type:** parabolic
- Performance:** 13,000 cp output with 6 deg beam
- Options:** 90° or wide-angle lens with snap-on light diffuser for manholes/tanks



Control Belt or Vest

- Single-handed joystick control of zoom and focus
- Single-handed control of individual lamps
- Single-handed control of patent-pending onscreen focal distance display (20-100' in 20' increments)
- 95 W/hr rechargeable batteries
- Composite output jacks connect to digital monitor/recorder
- Automatic battery charger



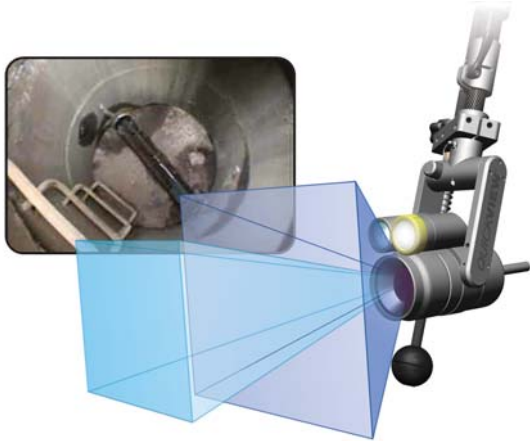
Camera

- Type:** Color 1/4" EXview HAD CCD
- Resolution:** 450 HTVL
- Zoom:** 216:1 (18:1 optical × 12:1 digital)
- Focus:** auto & manual with macro capability
- Iris:** auto & manual
- Shutter:** auto & manual (1/1 to 1/10,000 sec)
- Sensitivity:** 0.7 lux
- Construction:** Clear anodized aluminum
- Environment:** Submersible to 150'
- Temperature:** 0° to 120° F



Video Imaging & Storage

- Mini DV recorder with greater resolution and color bandwidth than VHS
- 4" LCD display provides excellent clarity
- Memory Stick[®] (optional) media terminal to capture digital still images at 640 x 480 resolution from videotape, analog input or digital video
- Sony i.LINK[®] interface connects to PCs, peripherals and consumer and professional A/V hardware
- S-Video input and output
- Compatible with WinCan[™] software for database storage and reporting



Manhole & Tank Inspection.

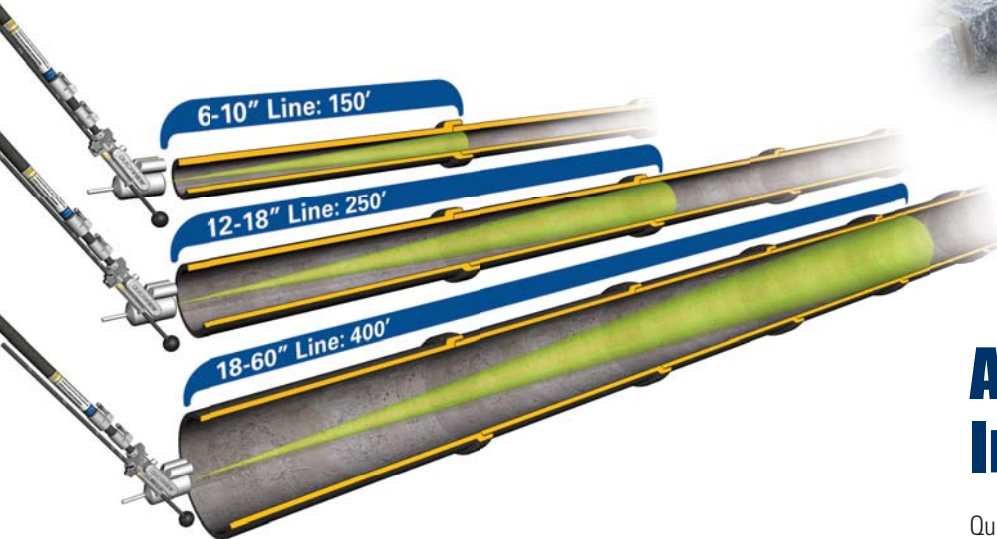
QuickView is available with a 0.5X magnification lens that doubles its field of view to 90-degrees, perfect for undistorted, wide-angle viewing of manholes, basins and tanks. It boosts inspection productivity, granting a broader view of close-up targets to minimize camera repositioning. A light diffuser supplied with the lens spreads lamp output for even illumination of large target areas.

Maximum Portability.

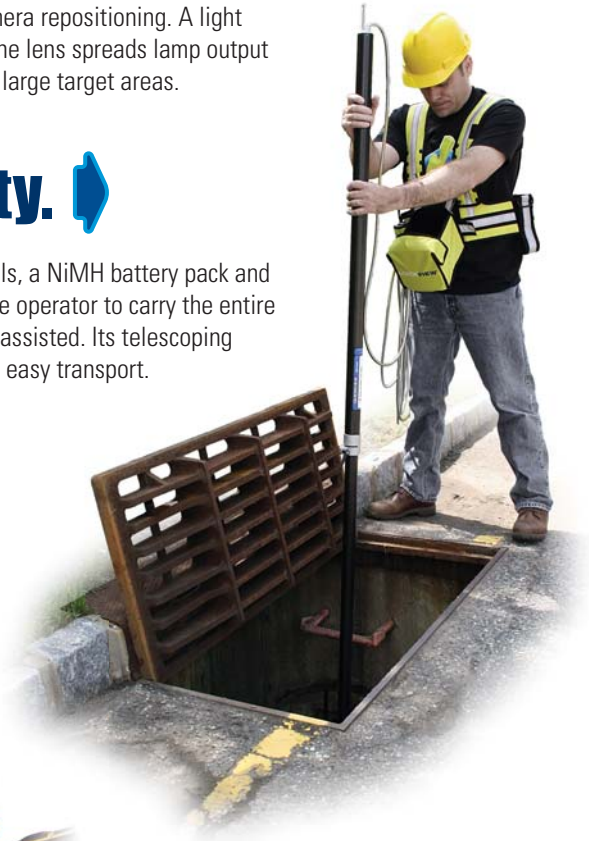
QuickView's operator safety vest holds system controls, a NiMH battery pack and a portable viewing/recording device, allowing a single operator to carry the entire system by hand and perform complete inspections unassisted. Its telescoping pole extend to 30', yet collapse to as small as 60" for easy transport.

Extreme Capability.

QuickView's powerful 216:1 zoom, narrow-beam HID lamps and patented stabilization technology allow it to view farther than any other zoom system. The chart below illustrates typical ranges in common pipe sizes.



* Viewing to 400' in large-diameter pipelines requires auxiliary lighting.



Affordable Intelligence.

QuickView delivers a wealth of information without depleting your budget. It requires far less time and overhead per inspection than traditional CCTV.

QuickView and the QuickView logo are trademarks of EnviroSight, LLC. ©2006 EnviroSight, LLC. All rights reserved. QuickView carries patent no. 6,538,732 and 7,009,898. Other patents pending.

Lighter and more maneuverable than the standard QuickView pole, this collapsible carbon fiber pole comes in standard and extended lengths exhibiting exceptional rigidity and strength.

E-5100-3016-HD E-5100-3024-HD E-5100-3030-HD

Length	16'	24'	30'
Retracted Length	60"	81"	85"
Pole Diameter	1 7/8"	1 7/8"	1 7/8"
Pole Weight	3.4lb	3.8lb	4.0lb
Segments	4	4	5



Positive-locking clamps (below) hold segments rigidly in their extended or retracted settings.

QuickView can display the approximate distance to in-focus targets onscreen. Distance is measured with $\pm 10\%$ accuracy over a 20–160 ft range, with accuracy deteriorating outside this range. Accuracy is expressed as a distance range within which the target resides. To ensure accuracy, follow these instructions:



1

Find

Adjust camera zoom until the target whose distance you wish to measure fills approximately 2/3 of the screen.

Hint: Targets must be adequately illuminated. At high zoom, a distant target may occupy a smaller area of the frame in the interest of optimum exposure.



2

Focus

(A) Push the joystick down to engage manual focus, then (B) move the joystick left/right to bring the target into sharp focus.

Hint: For maximum accuracy, focus beyond the target and then adjust focus nearer until target returns to focus.[†]



3

Measure

Press 'Menu/Measure'. The distance to the target will appear onscreen after 2 seconds, then disappear after 5 more seconds.



Measurement accuracy depends on proper calibration. Follow instructions for proper QuickView calibration procedure and interval.

[†] As zoom decreases, depth of field increases. Particularly at low zoom, accuracy requires you first to focus beyond the target, and then to adjust focus nearer until the target returns to focus. QuickView is calibrated to measure distance to the region of focus that is nearest to the camera.