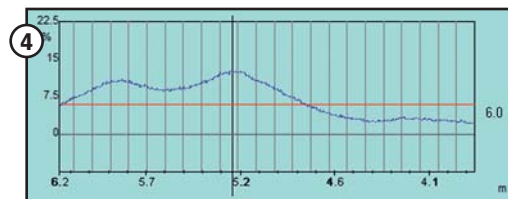
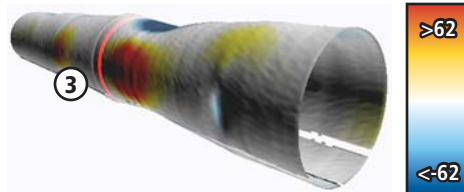
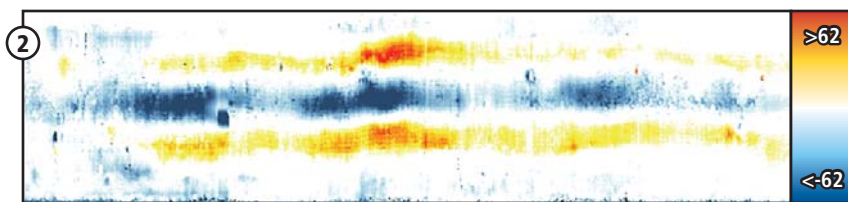
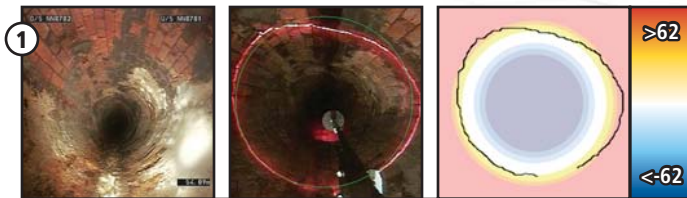
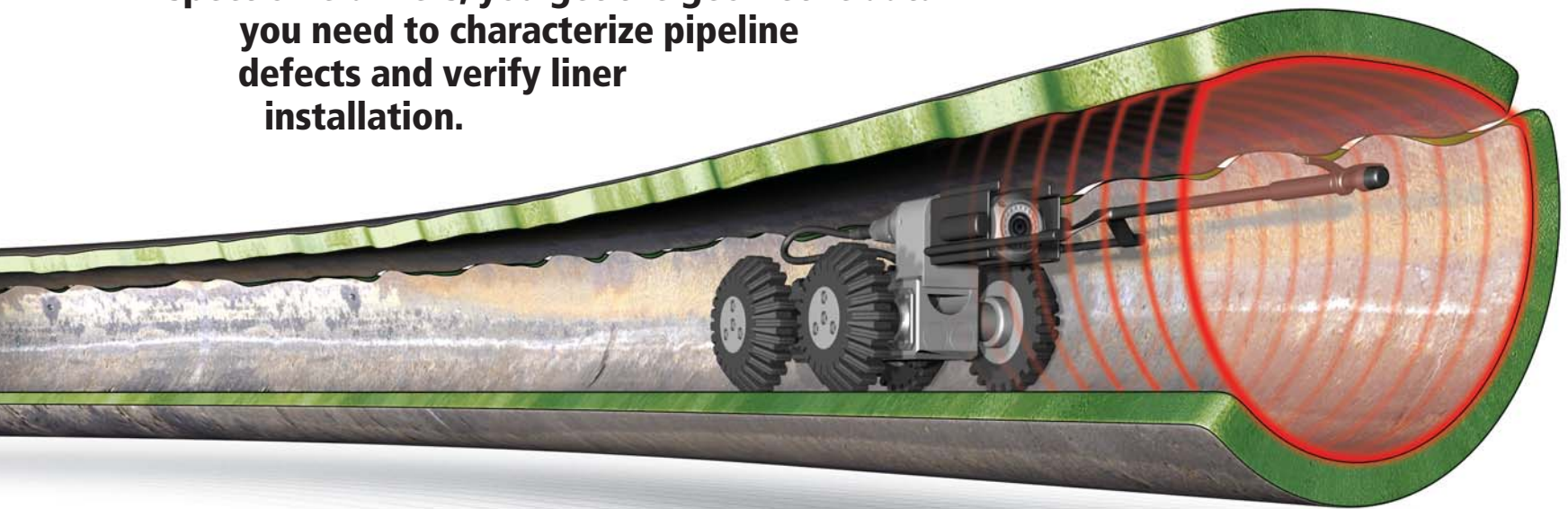


# View Pipeline Condition In a Whole New Light.

With laser and sonar profiling for Envirosight inspection crawlers, you get the geometric data you need to characterize pipeline defects and verify liner installation.

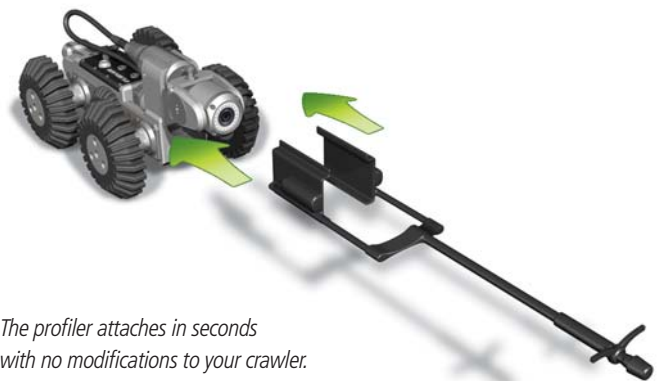


1. Illuminated, non-illuminated and captured views of laser line projection.
2. 2D scan (circumference vs. length) color-coded to depict radial deviation.
3. 3D relief of pipe color-coded to depict radial deviation.
4. Graph showing change in pipe ovality over length.

## The Profiler for ROVER® and SuperVision®

crawlers analyzes pipe for indications of deformation, collapse, corrosion, debris, and improper liner installation. The laser works above flow, and sonar works below. Each can be used individually, or both simultaneously.

Standard reports track a pipe's true diameter, ovality (per ASTM 1216), capacity, x/y diameter and maximum diameter. For engineers, additional reports address corrosion, structural cracking, debris and relining.



The profiler attaches in seconds with no modifications to your crawler.

Envirosight, SuperVision, ROVER and their respective logos are trademarks of Envirosight, LLC. ©2007 Envirosight, LLC. All rights reserved.

online [www.envirosight.com](http://www.envirosight.com)  
toll free 866.936.8476 • direct 973.252.6700

member  
PipeVision  
ALLIANCE

**Envirosight** LLC  
SPECIALISTS IN PIPELINE INSPECTION