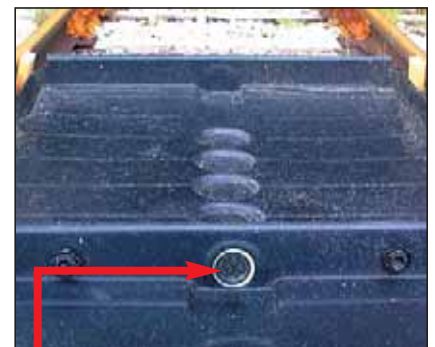


Part# 9595



Easy to Install, Modular Design

Center and Side Pans are 53.5" long; containment areas can be easily assembled to any length desired.



Large, 3"-diameter flow-through channels allow spills to quickly travel from one Pan to the next. Channels are located at the low point in each Center and Side TrackPan.

NOTE: Ultra TrackPans can also be ordered as complete systems: Popular 9-foot, 40-foot and 60-foot systems are available.

Ultra-TrackPans have been designed to provide spill containment at industrial rail sidings, locomotive maintenance and fueling facilities. Available in virtually any length, Ultra-TrackPans may be used to collect small spills and leaks OR to capture and channel off significant spills caused by defective equipment or a major overflow.

- Prevent Costly Cleanup and Regulatory Fines.
- Slip-Resistant Design — Entire top surface is safe to walk on, even when wet or oily.
- All Polyethylene Construction — Rugged TrackPans withstand harsh chemicals and are designed to function in temperatures ranging from -40° F to +140° F.
- Sealed System — Polyethylene gaskets keep spills from falling between the rails and Pans.
- Trucks and other vehicles can drive over TrackPans with grates in place.*
- Economical, easy to install.

*To drive over TrackPans, firm footing must be beneath the Pans; also must "ramp up" to Side Pans with asphalt or concrete.



ULTRA-TRACK PANS	
Track Pans with Grates, No Covers	Track Pan Covers Only
<p>Part# 9566: Center Track Pan with Grates (Includes 2 bulkhead fittings, 4 gaskets, 2 grates) Dimensions: 53 1/2" x 53 1/2" x 6" (1,359 mm x 1,359 mm x 153 mm) Weight: 112 lbs. (51 kg) • Containment Capacity: 18 gallons (69 L)</p>	<p>Part# 9580: Cover for Center Track Pan Dimensions: 55" x 52 1/2" (1,397 mm x 1,333 mm) Weight: 24 lbs. (11 kg)</p>
<p>Part# 9576: Side Track Pan with Grate (Includes 1 bulkhead fitting, 2 gaskets, 1 grate) Dimensions: 53 1/2" x 27 1/2" x 6" (1,359 mm x 699 mm x 153 mm) Weight: 58 lbs. (26 kg) • Containment Capacity: 19 gallons (72 L)</p>	<p>Part# 9581: Cover for Side Track Pan Dimensions: 55" x 28 1/4" (1,397 mm x 717 mm) Weight: 11 lbs. (5 kg)</p>
<p>Options: Part# 9584: Rebar Fasteners with Protective Caps, 20-Pack • Part# 9559: 3" dia. Bulkhead Fitting (for below-grade piping)</p>	

U.S. Patent Nos. 5,562,047; 6,173,856; 6,305,569