

## DrainCovers



### Tough, Reversible DrainCovers in Two Sizes

These tough but easy-to-handle DrainCovers are made of solid polyurethane. They're tacky on both sides, so either side can be used for forming a tight seal to block contaminants.

### Reusable DrainCovers are Chemical-Resistant

More chemical-resistant than rubbers or plastics, DrainCovers stand up to a wide range of chemicals, solvents and oils. Reusable; can be washed and stored in the handy, portable box.

**HYC** Helps you comply with 40 CFR 112.7(c)(1) and 40 CFR 263.30(a). See page 48 for details.

### DrainCovers

Item #	Description	Size	Units/Pkg
ADC36-R	36" DrainCover	36"Lx36"Wx.25"H	1
ADC42-R	42" DrainCover	42"Lx42"Wx.25"H	1

## SpillCurb Containment Berm

### Non-absorbent Berm Diverts Liquids

This sturdy, flexible 100% polyurethane Berm stands up to oils, coolants, solvents and water. The tacky bottom grips smooth surfaces. Ideal for applications where you want to divert or redirect liquids without absorbing them.

### Keep it Handy

Store near spill-prone areas since it's quick and easy to deploy. Cleans easily with soap and water for reuse.

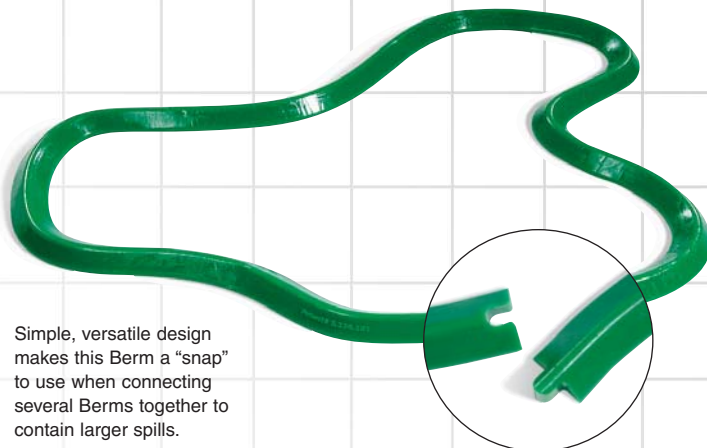
### Customize Your Curb

Combine 10' lengths of SpillCurb with Corners and Connectors to fit any area.

### SpillCurb

Item #	Description	Size	Units/Pkg
MR8014	SpillCurb	10'Lx3.75"Wx2.25"H	1
MR8018	SpillCurb Corner	4"Lx4"Wx2.25"H	1
MR8019	SpillCurb Connector	4"Lx2.25"W	1

## Connectable Spill Berm



Simple, versatile design makes this Berm a "snap" to use when connecting several Berms together to contain larger spills.

### Easily Bends to Fit any Angle or Curve

Made of flexible 100% polyurethane elastomer so it's non-absorbent and resistant to a wide variety of chemicals and fluids.

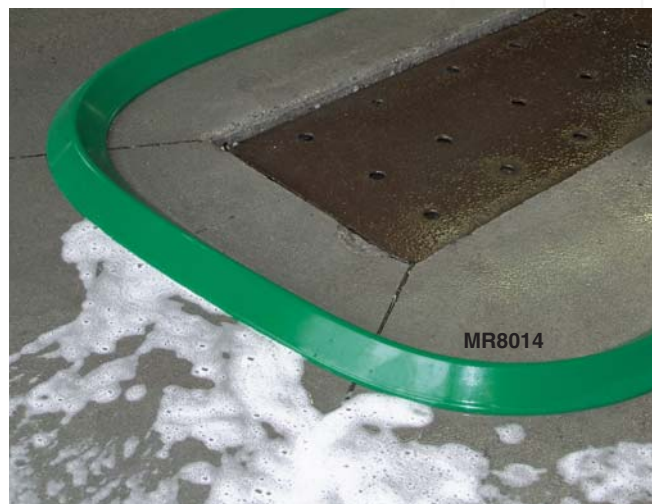
### Sturdy and Reusable

Interlocking ends connect individual sections to create longer lengths so you can contain almost any spill. Just clean it with soap and water and it's ready to reuse.

**HYC** Helps you comply with 40 CFR 112.7(c)(1) and 40 CFR 263.30(a). See page 48 for details.

### Connectable Spill Berm

Item #	Description	Size	Units/Pkg
SPB10C	Connectable Spill Berm	10'Lx2.25"Wx1.375"H	1



**HYC** Helps you comply with 40 CFR 112.7(c)(1) and 40 CFR 263.30(a). See page 48 for details.



### Ultra-DrainGuard®

Ultra-DrainGuard® removes waste from stormwater before it can become a problem in the water system. This oil and sediment filtering product removes up to .87 gallons of hydrocarbons as well as dirt, sand and other contaminants.

Designed for use in industrial facilities, construction sites, retail facilities and parking lots where polypropylene geotextiles collect oil, fuel and other contaminants that drip from cars.

*This item drop ships from vendor.*



Helps you comply with 40 CFR 122.26. See page 48 for details.

#### Ultra-DrainGuard®

Item #	Description	Size	Units/Pkg	Weight/Pkg
<b>NEW ULT9217</b>	Ultra-DrainGuard® - Oil & Sediment	48"Lx36"Wx18"H	1	2 lbs.
<b>NEW ULT9218</b>	Ultra-DrainGuard® - Oil & Sediment	48"Lx36"Wx18"H	10	20 lbs.



### Ultra-GutterGuard®

Use in areas with high stormwater flow to prevent pollutants and debris from entering storm drains. Unique, multi-dimensional outer filter combined with rigid inner frame maintains a low profile

to prevent damage from vehicular traffic. Allow 12" overlap on each side of drain. *This item drop ships from vendor.*



Helps you comply with 40 CFR 122.26. See page 48 for details.

#### Ultra-GutterGuard®

Item #	Description	Size	Units/Pkg	Weight/Pkg
<b>NEW ULT9320</b>	Ultra-GutterGuard®	9" diam. x 8'L	1	19 lbs.
<b>NEW ULT9321</b>	Ultra-GutterGuard®	9" diam. x 10'L	1	24 lbs.
<b>NEW ULT9322</b>	Ultra-GutterGuard®	9" diam. x 12'L	1	28 lbs.



### Ultra-CurbGuard®

For use with curb openings without street grates, Ultra-CurbGuard® conforms to the shape of the curb for maximum performance. Patented design allows clean

water to flow through while trapping sediment and oil. Built-in overflow capabilities. Order length to exceed inlet opening by 2'.

*This item drop ships from vendor.*



Helps you comply with 40 CFR 122.26. See page 48 for details.

#### Ultra-CurbGuard®

Item #	Description	Size	Units/Pkg	Weight/Pkg
<b>NEW ULT9266-OS</b>	Ultra-CurbGuard® - Oil & Sediment	4" diam. x 8'L	1	18 lbs.
<b>NEW ULT9267-OS</b>	Ultra-CurbGuard® - Oil & Sediment	4" diam. x 10'L	1	20 lbs.
<b>NEW ULT9268-OS</b>	Ultra-CurbGuard® - Oil & Sediment	4" diam. x 12'L	1	24 lbs.





**NEW**

### Commercial Silt Fence

**Commercial-Grade Silt Fencing Allows Water to Pass While Trapping Valuable Soil**

Premium quality Commercial Silt Fence is specially designed to impede silt and sediment (very fine soil particles) from washing away from the “protected” area during storm events or other water-related or erosion-related events. The Fence allows water to pass through while retaining silt and other matter, thereby protecting streams, lakes and other waterways from build up of silts and sediments.

**Durable construction**

It also keeps adjoining roadways and properties from the same buildup and dispersion of eroded soils. Constructed from 72 gsm. UV stabilized black “tape-tape” commercial-grade fabric; made from 100% polypropylene. The fabric is identified using red marker yarns, also UV stabilized. 36" x 100' Fence includes 11 hardwood stakes. The fence is attached to stakes using 5 staples per stake.



**NEW**

### Orange Safety Fence

**Ideal for Temporary Enclosures**

This strong, highly visible Fence is the ideal choice for construction sites, industrial facilities, crowd control, delineation, debris control and as a visual barrier. Lightweight yet durable, 100% high-visibility Orange polypropylene construction makes this Fence ideal for temporary enclosures.

**UV-Stabilized Fence is Easy to Install**

Reusable Fence resists sagging and is UV stabilized for long outdoor life. 48" H x 100' L. Can be cut to size. Easy to install; installation of Safety Fence does not require wooden stakes. The product can be installed by attaching it to metal posts and securing it with wire ties (posts and ties not included).

Commercial Silt Fence				
Item #	Description	Size	Units/Pkg	Weight/Pkg
<b>NEW ERO36100</b>	Commercial Silt Fence	36"Hx100'L w/ 11 stakes	1	23.8 lbs.

Orange Safety Fence				
Item #	Description	Size	Units/Pkg	Weight/Pkg
<b>NEW ERO48100</b>	Orange Safety Fence	48"Hx100'L	1	5 lbs.

### TreeSaver Safety Fence

**Protect Delicate Landscaping by Creating a Strong Barrier Around It**

Constructed of woven polypropylene, this highly visible orange fabric fence is used to identify planted areas and prevent destruction to planted trees.

This fabric can also be used for highlighting particular areas in construction sites or for crowd control.

48" H x 100' L fence is easy to install with included hardwood stakes.



**NEW**

TreeSaver Safety Fence				
Item #	Description	Size	Units/Pkg	Weight/Pkg
<b>NEW ERO48100-TR</b>	TreeSaver Safety Fence	48"Hx100'L w/ 11 stakes	1	27.6 lbs.

Stormwater Management