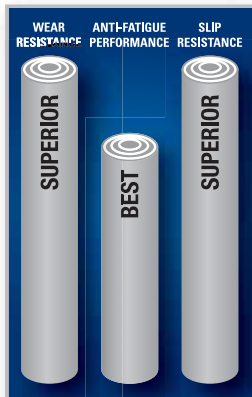


#850
#856

NIRU® CUSHION-EASE® GSII™
NIRU® CUSHION-EASE® GSII™ SOLID

SAFETY / ANTI-FATIGUE • "WET/DRY" • SUPERIOR™

- **Sales Tip:** GSII™ excels in the harshest industrial environments because it resists the chemicals, oils, and greases that cause traditional rubber matting to breakdown.
- **Where to Specify:** (850) Intended for harsh wet environments where industrial chemicals, oils, and greases are commonly found. (856) should be recommended for industrial applications where exposure to chemicals, oils, and grease is light to moderate.
- GSII™ technology offers the ultimate in durability and performance in the harshest environments
- 100% Nitrile rubber compound provides the highest degree of resistance to chemicals, oils, and greases while Silicon Carbide grit surface provides long lasting traction
- Available in perforated (850), or solid top (856) versions
 - 850 has a large hole drainage system that facilitates the removal of liquid and debris from the work area
 - 856 offers solid-top construction for additional anti-fatigue relief, and is easy to clean
- Overall thickness is 3/4"
- Modular design is compatible with NoTrax® 551 M.D. Ramp System and can accommodate a variety of custom configurations (see page 24 for more information)



RESULTS FROM INDEPENDENT TEST LABS & PRESENTED AS COMPARISONS TO OTHER NoTRAX® INDUSTRIAL MATS



Grit Detail



Part of the Solutions™ product line. See pages 30 – 31 for details.

Solutions™
BY NOTRAX®

#850/856 Niru® Cushion-Ease® GSII™/GSII™ Solid		
Stock Size	3' x 3'	3' x 5'
Weight (lbs.) #850	24	42
Weight (lbs.) #856	30	N/A

Shipping Location: Superior Manufacturing Group - Chicago, IL 60638



#850

NIRU® CUSHION-EASE®
NIRU® CUSHION-EASE® SOLID

#650
#656

SAFETY / ANTI-FATIGUE • "WET/DRY" • SUPERIOR™



- **Sales Tip:** The amount of slip resistance required, and exposure to chemicals, oils, and greases are the key determining factors when choosing between GSII™ or Niru® Cushion-Ease® products
- **Where to Specify:** (650) Intended for harsh wet environments where industrial chemicals, oils, greases, and animal fats are often found. (656) should be recommended for industrial applications where exposure to chemicals, oils, greases, and animal fats can create slip hazards.

- 100% Nitrile rubber compound provides the highest degree of resistance to chemicals, oils, and greases
- Available in perforated (650), or solid top (656) versions
 - 650 has a large hole drainage system that facilitates the removal of liquid and debris from the work area
 - 656 offers solid-top construction for additional anti-fatigue relief, and is easy to clean
- Overall thickness is 3/4"
- Modular design is compatible with NoTrax® 551 M.D. Ramp System and can accommodate a variety of custom configurations (see page 24 for more information)



RESULTS from INDEPENDENT TEST LABS & PRESENTED as COMPARISONS to OTHER NOTRAX® INDUSTRIAL MATS



Part of the Solutions™ product line. See pages 30 – 31 for details.

Solutions™
 BY NOTRAX®

#650/656 Niru® Cushion-Ease® Solid		
Stock Size	3' x 3'	3' x 5'
Weight (lbs.) #650	23	40
Weight (lbs.) #656	29	N/A
Shipping Location: Superior Manufacturing Group - Chicago, IL 60638		

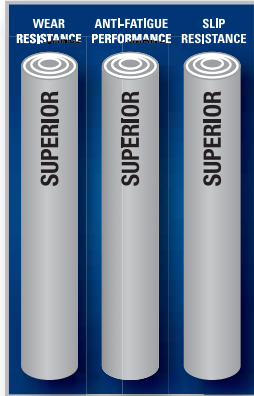


#650

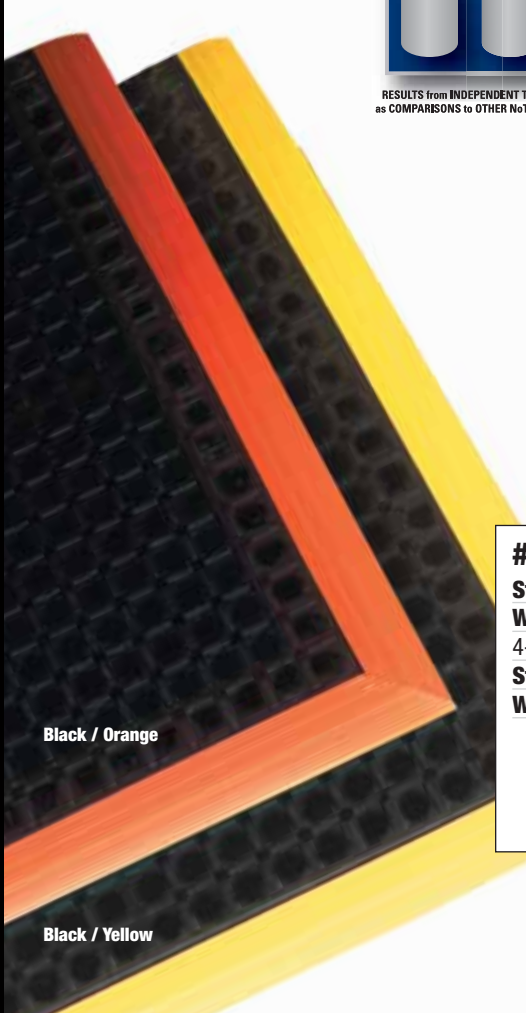
SAFETY STANCE®

SAFETY / ANTI-FATIGUE • "WET/DRY" • SUPERIOR™

- **Sales Tip:** Borders are a 100% nitrile rubber compound offering the same resistance to oils/chemicals as the mat – competitor's products use vinyl borders which can degrade.
- **Where to Specify:** All heavy Industrial environments and work cells that require worker protection from fatigue, spillage of liquids, heavy cart traffic.
- Resilient rubber compound withstands industrial cutting oils and chemicals.
- Large hole configuration facilitates drainage and resists clogging while mini-diamond studs on top surface minimize slippage.
- Colored beveled borders are permanently affixed to the mat (unlike competitors' snap-ins that come loose) and are available on 3 or 4 sides.
- Overall mat thickness is 7/8 inch.



RESULTS FROM INDEPENDENT TEST LABS & PRESENTED AS COMPARISONS TO OTHER NoTRAX® INDUSTRIAL MATS



Black / Orange

Black / Yellow



#549 SAFETY STANCE®

Stock Sizes	26" x 40"	38" x 40"	38" x 64"	38" x 124"
Weight (lbs.)	23	32	52	100
4-sided borders				
Stock Sizes	28" x 40"	40" x 40"	40" x 64"	40" x 124"
Weight (lbs.)	24	33	55	105

Shipping Location: Superior Manufacturing Group - Chicago, IL 60638



NEW

DIAMOND FLEX-LOK™

#620

SAFETY / ANTI-FATIGUE • "WET/DRY" • SUPERIOR™

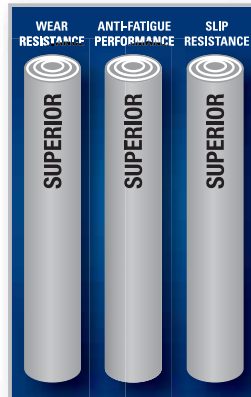
- **Sales Tip:** Factory-assembled custom configurations available – Call Customer Service for more information (800) 621-2802
- **Where to Specify:** Wet environments where anti-fatigue, drainage, and slip resistance are all a priority. PVC construction makes it especially resistant to chemicals found in harsh wet environments. Where custom configurations are a consideration.

- A PVC based workstation mat that combines the durability and toughness of an industrial mat with true ergonomic support and comfort.
- A multi-tiered footing design elevates the mat off the floor, creating air pockets that flex with the weight of the worker.
- A large hole drainage system facilitates the removal of liquids and debris from the work area.
- Beveled ramps eliminate trip hazards.
- PVC Construction offers resistance to chemicals, cutting fluids, oils and greases.
- A pronounced raised diamond pattern on the mat surface, and an inverted-V pattern on the ramps provide additional traction.
- Sorbent pads can easily be placed underneath the mat in extremely wet applications
- A permanent interlock system ensures that the mat will not come apart, eliminating the need for potentially harmful adhesives.



UNDERSIDE FOOTING

INTERLOCK SYSTEM



RESULTS from INDEPENDENT TEST LABS & PRESENTED as COMPARISONS to OTHER NoTRAX® INDUSTRIAL MATS

Tiles: Black
Ramps & Corners: Black/Yellow

#620 DIAMOND FLEX-LOK™

Stock Sizes	30" x 36"	30" x 48"	30" x 60"	30" x 72"	30" x 96"	42" x 72"	42" x 96"	42" x 120"
Weight (lbs.)	22	29	37	29	56	62	81	95
	Tiles (12" x 12")		Ramps (6" x 12")		Corners (6" x 6")			
Weight (lbs.)	2/ea.		.76/lin.ft.		.39/ea.			

Shipping Location: Superior Manufacturing Group - Moselle, MS 39459

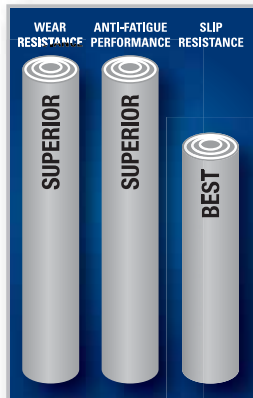




NEW

- **Sales Tip:** The first anti-fatigue mat designed specifically for combined use with a sorbent pad.
- **Where to Specify:** Wet environments where anti-fatigue is needed and where pooling liquids can create a safety hazard. In applications where sorbent pads are currently used.

- Made from a 100% Nitrile rubber compound that is extremely resistant to chemicals, cutting fluids, oils, and greases.
- Available in both stock sizes and on-site custom configurations to accommodate a variety of workstation layouts.
- A raised footing system design on the underside of the mat provides cushioning comfort and aeration.
- Molded beveled borders allow for easy access on to and off of the mat, while a recessed top surface acts as a tray that holds the sorbent pad and traps liquids.
- The tray top surface has a series of molded pins that grip and hold the sorbent pad in place.
- Designed to comfortably accommodate a standard 30" wide sorbent pad. (Inside tray width – 32")
- Overall mat thickness is 3/4"



RESULTS FROM INDEPENDENT TEST LABS & PRESENTED AS COMPARISONS TO OTHER NoTRAX® INDUSTRIAL MATS



Black

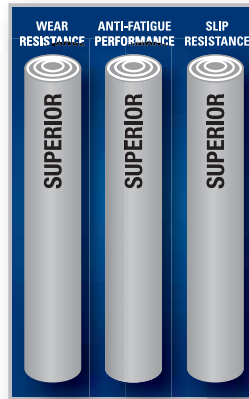
#580 SORB STANCE™ (Sorbent pads sold separately)			
Stock Sizes	3' x 5'	3' x 10'	3' x 15'
Weight (lbs.)	40	80	120
Shipping Location: Superior Manufacturing Group - Chicago, IL 60638			



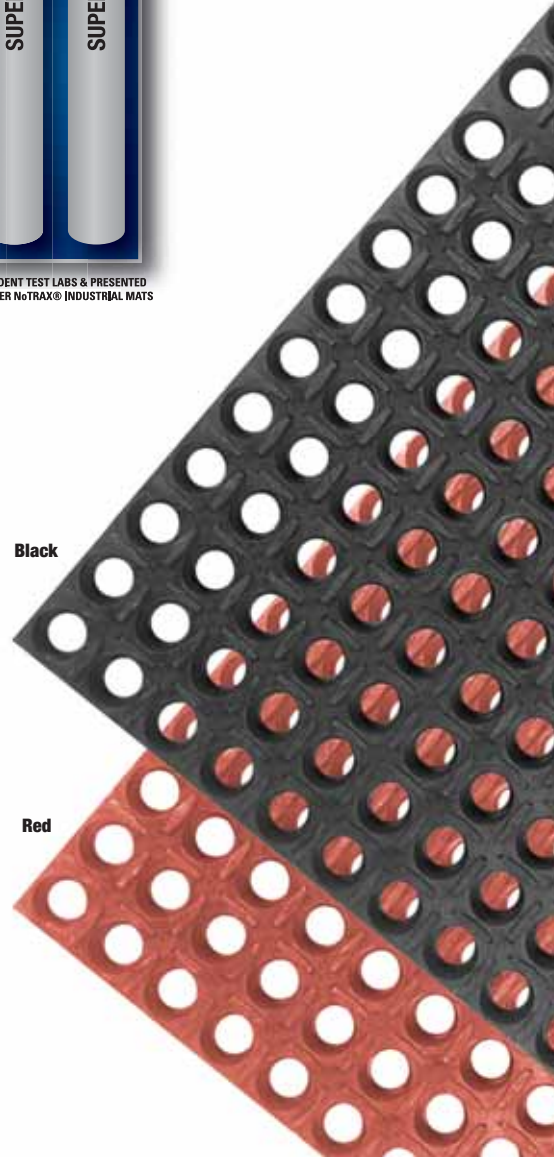


- **Sales Tip:** Multiple mats can be affixed together on-site with the use of optional connector strips.
- **Where to Specify:** Any heavy Industrial environment or work cell that needs to offer worker protection from fatigue and spillage of liquids.

- Resilient rubber compound withstands industrial greases, cutting oils and chemicals.
- Large hole configuration facilitates drainage and resists clogging.
- A nitrile version is also available for use in food processing applications.
- Overall mat thickness is 7/8 inch.
- Note: Mat has squared, not beveled edges.
- Modular design is compatible with NoTrax® 551 M.D. Ramp System and can accommodate a variety of custom configurations (see page 24 for more information)



RESULTS from INDEPENDENT TEST LABS & PRESENTED as COMPARISONS to OTHER NoTRAX® INDUSTRIAL MATS



#543 CUSHION-TRED™

Size/Color	2' x 3' - Black	3' x 3' - Black	3' x 5' - Black
Weight (lbs.)	19	29	49

Size/Color	2' x 3' - Red	3' x 3' - Red	3' x 5' - Red
Weight (lbs.)	19	29	49

Description	M.D. Ramps	Connectors
Color	(Black or Red)	(Black only)
Size	up to 5' ea	1' length
Weight (lbs.)	.7/lin.ft.	.33

Shipping Location: Superior Manufacturing Group - Chicago, IL 60638



#520
#522

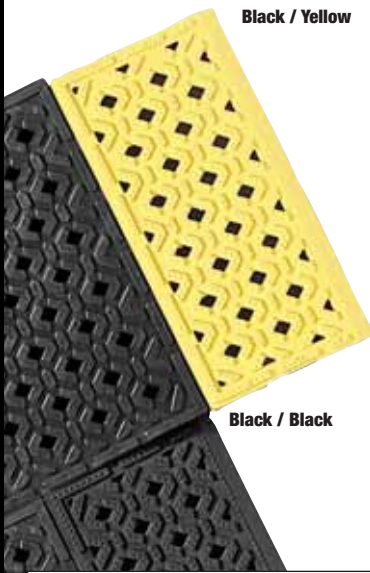
CUSHION-LOK™ PERFORATED SERIES
CUSHION-LOK™ w/ Grip-Step®

SAFETY / ANTI-FATIGUE • "WET/DRY" • BEST™

- **Sales Tip:** Factory-assembled custom configurations available - Call Customer Service for more information (800) 621-2802
- **Where to Specify:** Wet environments where drainage and slip resistance are a priority. PVC construction makes it especially resistant to chemicals found in harsh environments. Where custom configurations are a consideration.
- A tough PVC based workstation mat developed by NOTRAX® over 30 years ago to be a truly Superior mat.
- Hundreds of portholes facilitate drainage while the worker is elevated on a series of traction blades to help resist slippage and keep the worker out of the spillage.
- Six-inch wide diamond-studded beveled ramps are permanently affixed on 3 sides and perforated for drainage.
- Full 7/8 inch thickness.
- Offered in 4 versions to fit the most demanding environments:
- #520 Cushion-Lok™: All the durability as described but with a bottom surface design that affords maximum flex for worker comfort.
- #522 Cushion-Lok™ with Grip-Step®: Same as #520 but with a thick gritted layer applied to the top surface for extremely slippery environments.
- #520 HD Cushion-Lok™ Heavy-Duty: This is the workhorse! All of the above benefits but with a reinforced bottom surface design that repels crushing from extreme weights.
- #522 HD Cushion-Lok™ Heavy-Duty with Grip-Step®: Same as #520HD but with a thick gritted layer applied to the top surface for extremely slippery environments.



#522 Detail

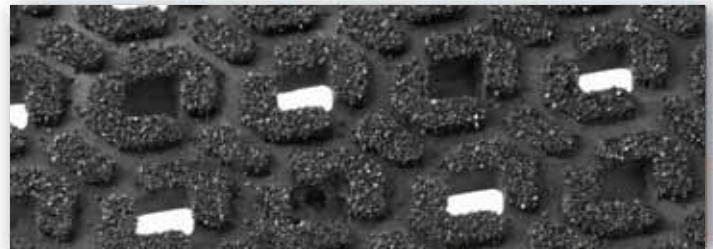


Black / Yellow

Black / Black

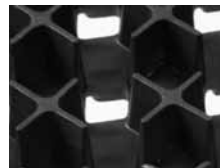


RESULTS from INDEPENDENT TEST LABS & PRESENTED as COMPARISONS to OTHER NOTRAX® INDUSTRIAL MATS



Standard Bottom

HD Bottom



CUSHION-LOK™ SERIES

Stock Sizes	30" x 36"	30" x 48"	30" x 60"	30" x 72"	30" x 96"	42" x 72"	42" x 96"	42" x 120"
Weight (lbs.) #522	13	18	23	29	37	41	52	62
Weight (lbs.) #520HD	22	29	37	44	56	62	81	95

* call for pricing of individual tiles, ramps, and corners
Shipping Location: Superior Manufacturing Group - Moselle, MS 39459





CUSHION-LOK™ SOLID-TOP SERIES CUSHION-LOK™ w/ Grip-Step®

#920
#922

SAFETY / ANTI-FATIGUE • "WET/DRY" • BEST™

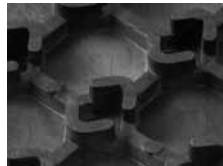
- **Sales Tip:** Factory-assembled custom configurations available - Call Customer Service for more information (800) 621-2802
- **Where to Specify:** Where anti-fatigue and anti-slip is a necessity. PVC construction makes it especially resistant to chemicals found in harsh environments. Where custom configurations are a consideration.

- A sister product to the Cushion-Lok™ #520 Series. This Series features a solid top/no perforation mat that can be interlocked with the #520 Series or used as a standalone mat.
- The worker is elevated on a series of traction blades that provide sure-footing and comfort.
- Six-inch wide diamond-studded beveled ramps are permanently affixed and perforated for any incidental drainage.
- Full 7/8 inch thickness.
- Offered in 2 versions to fit the most demanding environments:
- #920 HD Cushion-Lok™ Heavy-Duty Solid: Maximum resistance to crushing featuring a reinforced bottom surface and firm support for the worker.
- #922 HD Cushion-Lok™ Heavy-Duty Solid with Grip-Step®: Same as #920HD but with a thick gritted layer applied to the top surface for extremely slippery environments.

#922 Detail



HD Bottom



RESULTS from INDEPENDENT TEST LABS & PRESENTED as COMPARISONS to OTHER NoTRAX® INDUSTRIAL MATS



SOLID CUSHION-LOK™ SERIES

Stock Sizes	30" x 36"	30" x 48"	30" x 60"	30" x 72"	30" x 96"	42" x 72"	42" x 96"	42" x 120"
Weight (lbs.)	23	31	38	46	61	64	86	107

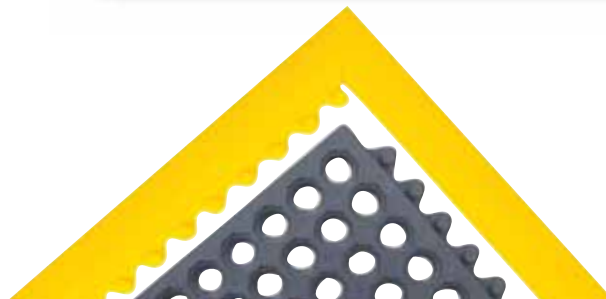
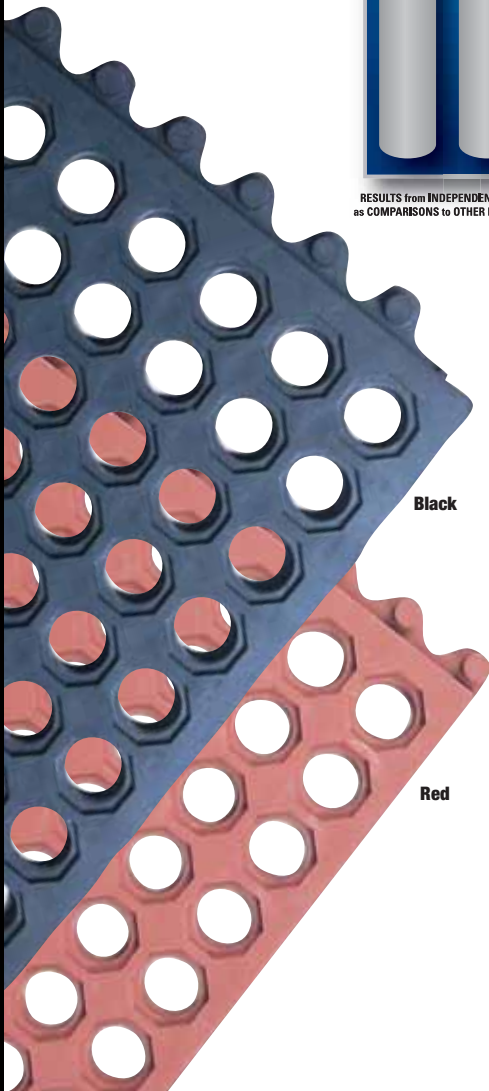
Shipping Location: Superior Manufacturing Group - Moselle, MS 39459



- **Sales Tip:** Easy to make custom configurations on-site by utilizing the patent pending #551 MD Ramp System™. (See page 24 for details).
- **Where to Specify:** Wet environments where comfort and durability are critical.
- A resilient rubber compound and unique support design offers exceptional fatigue relief. Large hole drainage design keeps moisture and debris free from worker platform.
- **Easy to snap together mats on-site for custom work station platforms.**
- Optional nitrile rubber borders available for trip-resistant platform.
- Available in 2 versions: (1) Black mat which is grease resistant and carries a 1-year warranty. (2) Red mat with extra nitrile content is grease-proof and carries a 3-year warranty.
- Overall thickness is 3/4 inch.



RESULTS from INDEPENDENT TEST LABS & PRESENTED as COMPARISONS to OTHER NoTRAX® INDUSTRIAL MATS



#550 CUSHION-EASE®		
Size/Color	3' x 3' - Black	3' x 5' - Black
Weight (lbs.)	24	39
Size/Color	3' x 3' - Red	3' x 5' - Red
Weight (lbs.)	24	39

Shipping Location: Superior Manufacturing Group - Chicago, IL 60638





- **Sales Tip:** Easy to make custom configurations on-site by utilizing the patent pending #551 MD Ramp System™. (See page 24 for details).
- **Where to Specify:** Dry environments where comfort and durability are critical.

- A sister product to the #550 Cushion-Ease™, this version also features a resilient rubber compound and unique support design to provide exceptional fatigue relief. Can be locked together on-site with #550.
- Easy to snap together mats on-site for custom work station platforms
- Optional nitrile rubber borders available for trip-resistant platform.
- Available in 2 versions: (1) Black mat which is grease resistant and carries a 1-year warranty. (2) Red mat with extra nitrile content is grease-proof and carries a 3-year warranty.
- Overall thickness is 3/4 inch.



RESULTS from INDEPENDENT TEST LABS & PRESENTED as COMPARISONS to OTHER NoTRAX® INDUSTRIAL MATS



Red



Black



#556 CUSHION-EASE® SOLID		
Size/Color	3' x 3' - Black	3' x 3' - Red
Weight (lbs.)	29	29
Shipping Location: Superior Manufacturing Group - Chicago, IL 60638		

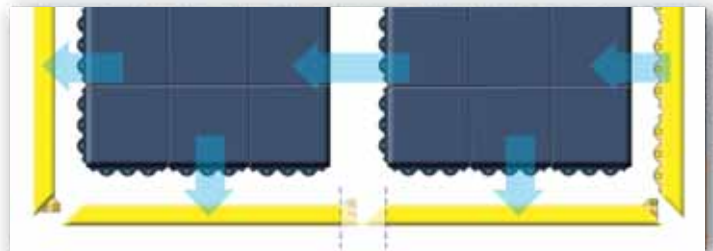
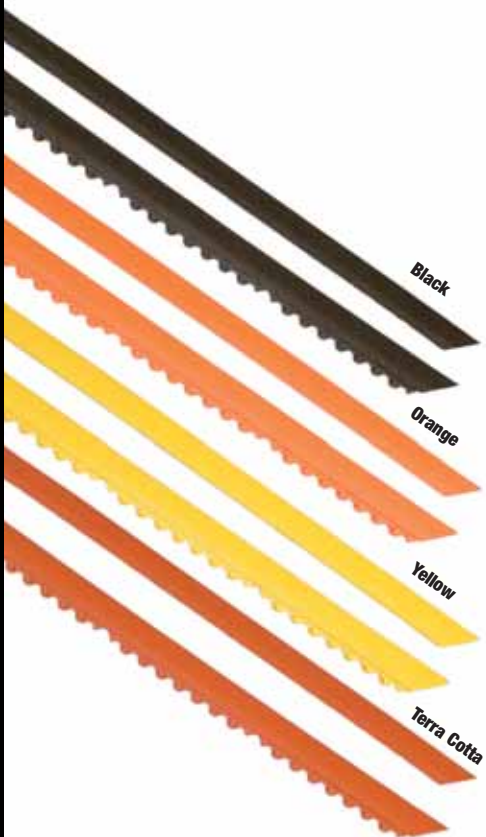


M.D. RAMP SYSTEM™

SAFETY / ANTI-FATIGUE • “WET/DRY”

- **Sales Tip:** Works just like a picture frame. Detailed instructions included with product. Mats can be made into any width and/or length required in 1' increments.

- For custom configuration performed on-site the patented #551 MD Ramp System™ can be purchased separately. These 100% nitrile rubber ramps fit the male/female locking system of the mat and are available as:
 - 2 foot long Male Ramps
 - 3 foot long Male Ramps or Female Ramps
 - 5 foot long Male Ramps or Female Ramps
- All Ramps lengths are beveled and molded with mitered corners and a protruding tab. The tab locks together the two adjoining ramps for a secure, professional corner. For a square edge, simply cut-off the miter following the cut line on the bottom of the ramp.



#551 M.D. RAMP SYSTEM™					
Size	2' Male	3' Male	3' Female	5' Male	5' Female
Weight (lbs.)	1.2	1.8	1.6	3.0	3.0
Connectors	(Black only)				
Size	1' length				
Weight (lbs.)	.33				
Shipping Location: Superior Manufacturing Group - Chicago, IL 60638					



NEW ECO STANCE™

#585

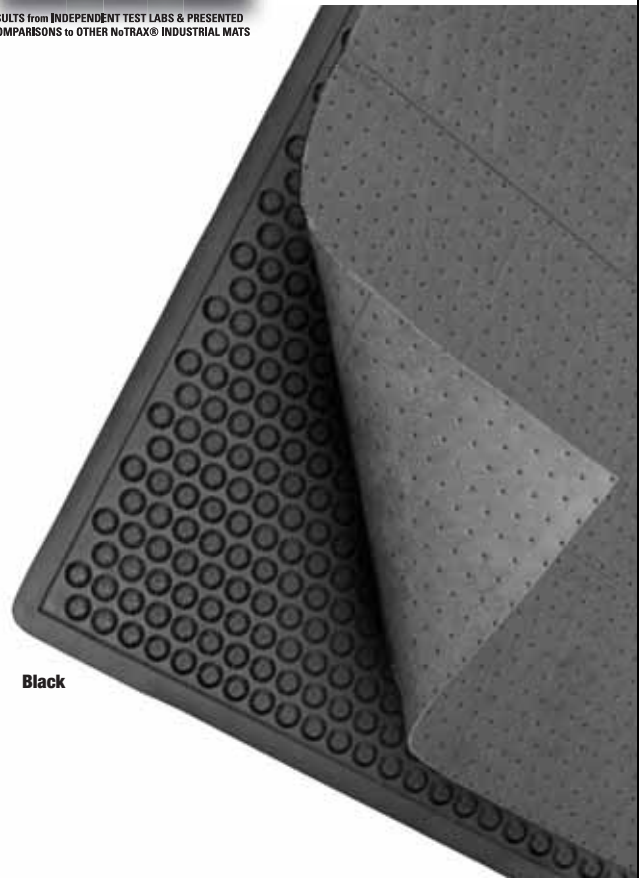
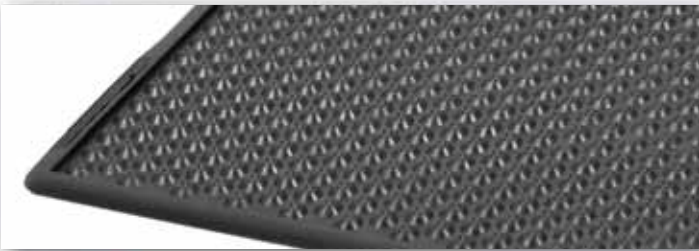
SAFETY / ANTI-FATIGUE • "WET/DRY • BEST"

- **Sales Tip:** One of the first anti-fatigue mats designed specifically for combined use with a sorbent pad.
- **Where to Specify:** Wet application environments where sorbent pads are often used to alleviate safety hazards. Where anti-fatigue properties are needed.

- Made from a 100% Nitrile rubber compound, Eco Stance™ is a light-weight and economical solution - extremely resistant to chemicals, cutting fluids, oils, and greases.
- A molded bubble pattern on the surface of the mat provides cushioning comfort and aeration.
- Molded beveled borders allow for easy access on to and off of the mat, while a recessed top surface acts as a tray that holds the sorbent pad and traps liquids.
- Molded pins on the raised bubbles holds the sorbent pad in place.
- Designed to comfortably accommodate a standard 30" wide sorbent pad. (Inside tray width – 32")
- Overall mat thickness is 3/4"



RESULTS from INDEPENDENT TEST LABS & PRESENTED as COMPARISONS to OTHER NoTRAX® INDUSTRIAL MATS



Black

#585 ECO STANCE™ (sorbent pads sold separately)	
Size/Color	3' x 5' - Black
Weight (lbs.)	22
Shipping Location: Superior Manufacturing Group - Chicago, IL 60638	



#420
#422

CUSHION-DEK™
CUSHION-DEK™ w/ Grip-Step®

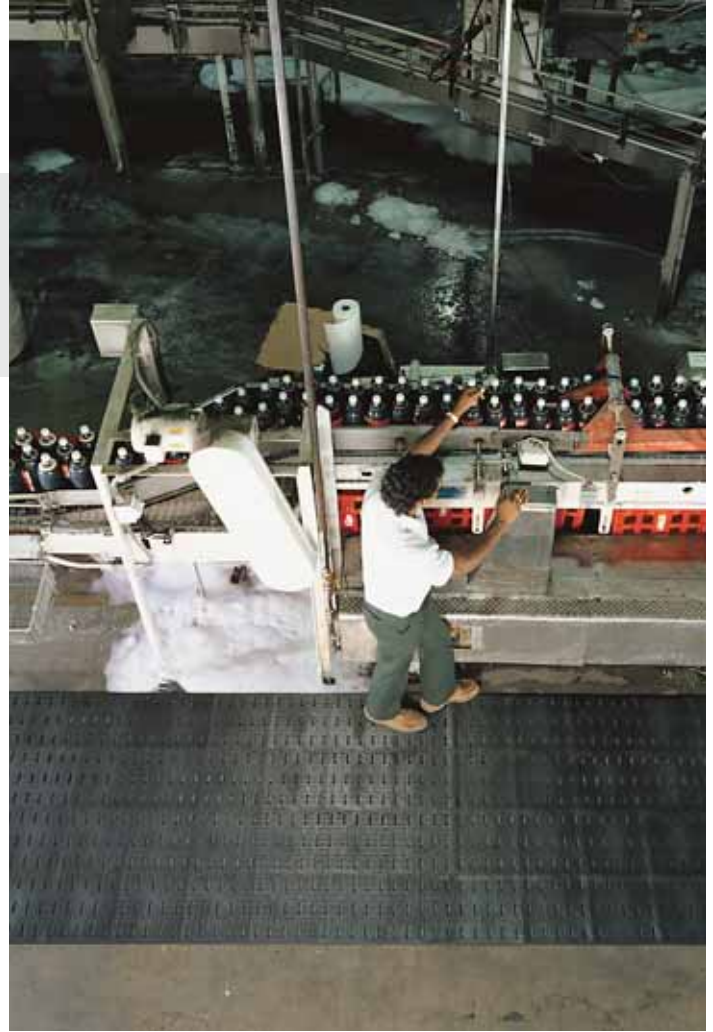
- **Sales Tip:** Factory-assembled custom configurations available - Call Customer Service for more information (800) 621-2802
- **Where to Specify:** Harsh environments that require a surface with traction and anti-fatigue properties.

- Tough PVC compound molded with a raised pyramid design to enhance traction.
- Slotted perforations (1/2" wide by 1-7/8" long) allow for moisture to escape worker platform.
- Studded bottom surface raises mat and allows for channeling of moisture and continuous aeration.
- Overall thickness is 7/16 inch.
- Offered in 2 versions:
- #420 Cushion-Dek™: All the durability and features as described.
- #422 Cushion-Dek™ with Grip-Step®: Same as #420 but with a thick gritted layer applied to the top surface for extremely slippery environments.

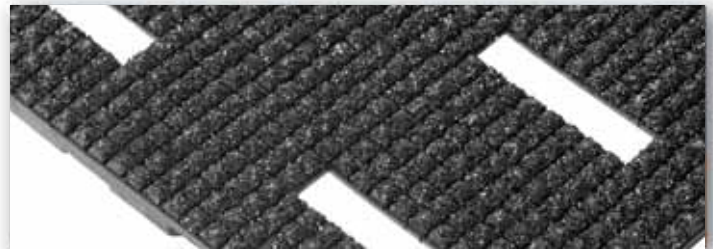


RESULTS from INDEPENDENT TEST LABS & PRESENTED as COMPARISONS to OTHER NoTRAX® INDUSTRIAL MATS

Black



#422 Detail



CUSHION-DEK™ SERIES

Stock Sizes	2' x 3'	2' x 6'	3' x 4'	3' x 6'	3' x 10'	4' x 6'	4' x 8'
Weight (lbs.) #420	8	15	15	22	36	29	39
Weight (lbs.) #422	9	18	18	27	45	36	48
Roll Sizes & Custom Sizes	2' x 30'	3' x 30'	4' x 30'	2' Widths	3' Widths	4' Widths	
Weight (lbs.) #420	72	108	156	1.20/sq.ft.	1.20/sq.ft.	1.20/sq.ft.	
Weight (lbs.) #422	89	134	178	1.48/sq.ft.	1.48/sq.ft.	1.48/sq.ft.	

Shipping Location: Superior Manufacturing Group - Moselle, MS 39459

SAFETY / ANTI-FATIGUE • "WET/DRY" • BETTER™





- **Sales Tip:** Competitive products feature only a flat or hollowed bottom which reduces the comfort of the mat.
- **Where to Specify:** Dry applications where there is a good deal of pivoting required.

- Extremely long-lasting rubber compound molded into a superbly comfortable bubble design.
- For maximum comfort, the bubbles are molded on an offset on the top and bottom of the mat to maximize flex and create air flow, all to enhance the ergonomic benefit.
- All 4 sides feature an integral bevel border system.
- Overall thickness is 3/8 inch.



RESULTS from INDEPENDENT TEST LABS & PRESENTED as COMPARISONS to OTHER NoTRAX® INDUSTRIAL MATS



Black

#447 COMFORT-EZE™

Stock Sizes	18" x 24"	24" x 36"	30" x 30"*	30" x 60"	30" x 10"***	30" x 20"***
Weight (lbs.)	6	10	10	20	40	80

*Beveled edges on 3 sides only **Multiple 30" x 60" mats bonded together

Shipping Location: Superior Manufacturing Group - Chicago, IL 60638



- **Sales Tip:** Ideal for one-worker stations. Cannot be extended beyond sizes offered.
- **Where to Specify:** Wet environments that require basic fatigue relief.

- A durable rubber compound formed with an alternating large and small hole drainage system to keep moisture and debris free from worker platform.
- Raised pattern surround large holes to channel drainage and provide worker traction.
- All 4 sides feature integral beveled ramps to minimize trip hazards.
- Available in 2 versions: (1) Black mat which is grease resistant and carries a 1-year warranty. (2) Red mat with extra nitrile content is grease-proof and carries a 3-year warranty.
- Overall thickness is 1/2 inch.



RESULTS from INDEPENDENT TEST LABS & PRESENTED as COMPARISONS to OTHER NoTRAX® INDUSTRIAL MATS



Red

#562 SANITOP®

Size/Color	3' x 5' - Black	3' x 10'* - Black	3' x 20'* - Black
Weight (lbs.)	27	54	108

Size/Color	3' x 5' - Red	3' x 10'* - Red	3' x 20'* - Red
Weight (lbs.)	27	54	108

***Consists of multiple mats bonded together. One inch of ramp is cut off to bond mats; therefore, overall length is slightly less**

Shipping Location: Superior Manufacturing Group - Chicago, IL 60638

Black





- **Sales Tip:** Can only make custom lengths, not widths. A perfect mat offered as a "bin" item to industry. Store extra sections on-site so sections damaged by forklift, etc. Can quickly and easily be replaced.
- **Where to Specify:** Wet or dry environments where long runs of anti-fatigue matting are needed

- Solid rubber construction formed with a diamond deckplate pattern on top surface.
- A sturdy waffle support system on the underside achieves maximum safety and comfort for the worker.
- Overall thickness is 1/2 inch.
- Available in three versions:
 - As a single work station mat with beveled borders on all 4 sides; or
 - As a mat with interlocking teeth on one end to serve as an "End" mat.
 - As a mat with interlocking teeth on both ends to serve as a "Center" mat.
- Specify Ends, Centers or Singles when ordering.



RESULTS from INDEPENDENT TEST LABS & PRESENTED as COMPARISONS to OTHER NoTRAX® INDUSTRIAL MATS



End

Center

Single



Black



#545 DIAMOND TOP INTERLOCK™

Stock Sizes	28" x 31"	36" x 31"
Weight (lbs.)	10	14

Specify Ends, Centers or Singles when ordering.

Shipping Location: Superior Manufacturing Group - Chicago, IL 60638

