



Shirts and Pants of FR Cotton INDURA®



Model SH93 Long Sleeve Shirts

Fabric: 7.0 oz. per square yard INDURA®

- three-ply banded collar with sewn-in stays
- plain style front with long rounded tails
- button flaps on both pockets, pencil slot in left flap
- two-ply yoke
- adjustable cuff closure with two buttons
- sewn throughout with NOMEX® thread

NFPA 70E
Arc Rating
7.0 oz. - 6.3
9.0 oz. - 7.7



INDURA® is a registered trademark of Westex, Inc.

Model PA26 Pants

Fabric: 9.0 oz. per square yard INDURA®

- uniform style with self-locking brass zipper
- seven belt loops take 2" belts
- two welted hip pockets, left one has button and loop closure
- sewn throughout with NOMEX® thread

LONG SLEEVE SHIRT SIZES:

Neck/Sleeve	Small	Medium	Large	X-Large	2X-Large	3X-Large
Length	14-14½	15-15½	16-16½	17-17½	18-18½	19-19½
Short	32"	•	•	•		
Medium	33½"	•	•	•	•	•
Long	35"	•	•	•	•	•
X-Long	36½"	•	•	•	•	•

PANT SIZES:

Waist: 28"-36" all sizes, 38"-50" even sizes • Open Bottoms: 37" unfinished

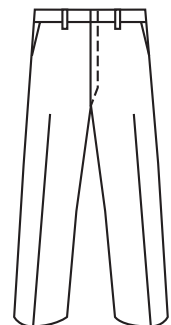


SH93



Long Sleeve Shirts

PA26



Pants

