

Extrication Suits of FR Cotton INDURA®



Model C012 Extrication Suits

Fabric: 9.0 oz. per square yard INDURA®

- radio pocket on left breast with microphone loop positioned above pocket
- right breast pocket with full flap and F.R. hook and loop closure
- cinch straps on waistband with F.R. hook and loop
- Kevlar felt knee reinforcement from knee to pant cuffs
- Kevlar felt sleeve reinforcement from elbow to sleeve cuffs
- Kevlar padding on legs is enclosed in water resistant material
- bellowed cargo pocket on left leg with flap and F.R. hook and loop closure
- EMT scissor pocket on right leg with flap and F.R. hook and loop closure
- 10" leg zippers with gusset behind giving protection even with zipper left open
- sleeve cuffs have F.R. hook and loop closure straps providing snug fit around the wrist
- 2" Scotchlite triple trim is attached around the sleeves, around leg bottoms and across the back
- heavy-duty, two-way brass zipper with NOMEX® zipper tape
- reinforced nickel plated brass snaps covered on the inside
- pleated, bi-swing back
- two hip pockets with flaps and F.R. hook and loop closures
- side access to pants with F.R. hook and loop closures
- NOMEX® ripstop pocketing
- sewn throughout with NOMEX® thread
- 3" high collar with throat piece and F.R. hook and loop closure

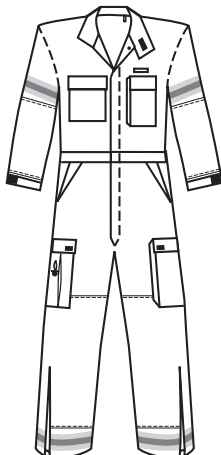


INDURA® is a registered trademark of Westex, Inc.

NFPA 70E
Arc Rating
9.0 oz. - 7.7

Note: NOMEX® Styles C012-5605 Navy Blue and C012-5645 Red available on special order. Min. order 10 suits.

C012



Extrication Suit

EXTRICATION SUIT SIZES:

	Small	Medium	Large	X-Large	2X-Large	3X-Large
Sizes:	34-36	38-40	42-44	46-48	50-52	54-56
Short:	•	•	•	•		
Regular:	•	•	•	•	•	•
Tall:			•	•	•	•
X-Tall:				•	•	•
Short: 5'4"-5'7" Regular: 5'7½"-5'11" Tall: 5'11½"-6'3" X-Tall: 6'3½"-6'6"						

