

# Tactical Wear Unlined Coverall



## Model C043

### Tactical Wear Coverall

This jumpsuit style is used by many correctional facilities and a large number of local municipalities in the state of California and beyond. It's practical design and rugged construction have made it a favorite in these areas.

**Fabric:** Regular Weight:

7.75 oz. per square yard 65% polyester/35% cotton

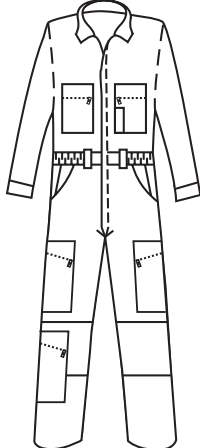
Light Weight:

5.5 oz. per square yard 65% polyester/35% cotton

- hook and loop closure at neck
- two breast pockets with zipper closures
- pencil slot on left breast pocket
- concealed heavy-duty, two-way brass zipper
- cuffs on sleeves with concealed snap closure
- pleated bi-swing back with elasticized inserts
- two side pockets are reinforced at bottom
- double reinforcement over knees
- cargo pocket on each leg with a zipper closure
- additional cargo pocket below right knee with slanted zipper closure
- belt loops
- two zippered hip pockets



C043



Tactical Wear Coverall

Regular  
Weight

1572  
Olive

Light  
Weight

0672  
Olive

36

**TACTICAL WEAR UNLINED COVERALL SIZES:**

Chest:	36	38	40	42	44	46	48	50	52	54	56
Short:	•	•	•	•	•	•					
Regular:	•	•	•	•	•	•	•	•	•	•	•
Tall:			•	•	•	•	•	•	•	•	•

Short: 5'4" - 5'7"    Regular: 5'7½" - 5'11"    Tall: 5'11½" - 6'3"

Note: Additional sizes are available in some styles.