



Portable Tables & Carts

mobile systems & work centers

- Durable carts for pulling stock, assembly operations or other heavy tasks
- Welded steel frame construction with soft rubber casters for easy maneuverability
- Overall height: 36"
- Ships completely assembled and ready-to-use
- 800 lb. capacity with recommended casters



RMD25T5SR w/optional drawer

- 5" x 1¼" soft rubber casters
- Shelf spacing
- 16-gauge steel
- 2" hemmed lip



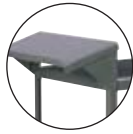
RMD25T5SR w/optional writing shelf

accessories



Drawer:

Easily accessible storage drawer. 15½"W x 5½"H x 16½"D O.D.



Writing Shelf:

Handy, angled-shelf with pencil edge



Rubber Matting:

For all standard size shelves



Wheel Locks:

Control truck movement and prevent wheels from turning. Available on all wheels. Normal installation on two swivel wheels

features

portable tables & carts features



Angle posts for added strength and rigidity



Tubular push handle – MD series only



Powder-coated finish resists wear

Portable Tables

Model No.	Weight Capacity (lbs.)	Caster	Shelves	Height (Inches)	Shelf Clearance (Inches)	Handle	Cart Size (Inches)
RMD25T5SR	800	2 Swivel / 2 Rigid	2	36	27	Tubular	24 x 36
RMD35T5SR	800	2 Swivel / 2 Rigid	3	36	12½	Tubular	24 x 36



Mobile Work Tables *Heavy-Duty*



- Industrial-grade mobile workstation with a welded-steel frame and steel-reinforced premium oak top – ships fully assembled
- 24"L x 48"W work area with 9 adjustable height settings from 36" x 48"
- 5" x 2" bolted on polyurethane casters; two rigid, two swivel with total lock brakes
- Wrap-around steel back stop keeps items from falling behind work table
- Gray powder-coated finish
- Model No. **RHWB2448P5PY0G**



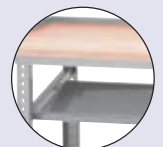
Hardwood work surface extends 2" to accommodate vise or clamps



Hardwood work surface with premium 1¼" (5/4) thick oak boards and rounded edges



21" D x 36" W bottom shelf



13½" D x 37" W, tilted middle shelf for easy access to bins



Mobile Work Tables *Medium-Duty*

- Industrial-grade work table with steel-reinforced hardwood top – ships fully assembled
- 24" L x 48" W x 36" H
- 2 steel drawers – 15½" W x 5½" H x 16½" D
- 2 swivel, 2 rigid bolted-on soft rubber casters; 5" x 1¼" Total lock brakes on swivel casters
- Gray powder-coated finish
- Model No. **RMWB24485SRTPG**

