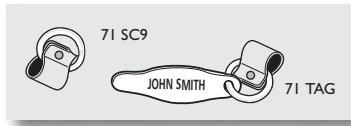


# ACCESSORIES FOR PADLOCKS

## • Identification Tags and Collars



# **71 TAG** 1/2" x 13/4" BRASS TAG WITH RING (PACK OF 12)

# **71 SC9** COLLAR COMPLETE WITH RIVETS FOR TAG (PACK OF 12)



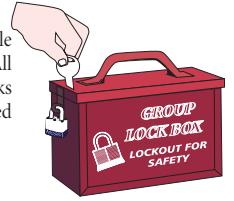
• **Chain Attachment**  
9" chain with chain holder for permanently attaching lockouts at pre-designated locations (control or valve sites).

# **71CS** 9" chain attachment with chain holder. Available in pack of 12

## • Group Lock Box

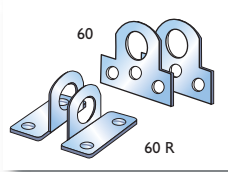
To be used for work team lockout situations where there are multiple employees, energy sources, machines and processes to be locked out. All keys are stored in the lock box. The group leader or foreman then locks the box until the job is complete and all group members are cleared from work area. Heavy steel construction.

# **GLB01** Group lock box.



## • Padlock Eyes

These padlock eyes will help you comply with OSHA standards, when the equipment has to be modified to accept locks and lockout devices. Two types of mounting eyes are available. Surface mount or inside mount.



# **60** SURFACE MOUNT (FLAT) AVAILABLE IN PACK OF 12 PAIRS

# **60R** INSIDE MOUNT (RIGHT ANGLED) AVAILABLE IN PACK OF 6 PAIRS

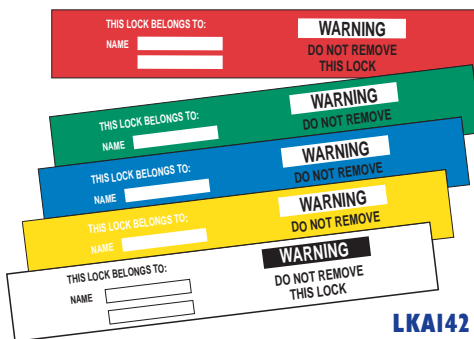
## • 13 Lock Group Lock Box

Simplifies lockout of large equipment. After machine or process is locked out, the key or keys are placed in a lock box. Then, each authorized work team member places a personal lock or tagout device to the group lock box. Ensures that no one employee has access to the box unless all employees have removed their locks or tags. Accepts up to 13 individual locks. Heavy steel construction.

# **GLB02** Group lock box.



# LOCK LABELS



LKAI42

3/4" x 5"

Self-laminating padlock labels are an easy way to identify employee's locks. These labels are made of aluminum foil with permanent pressure-sensitive adhesive backing. Write on decals with ballpoint pen or typewriter.

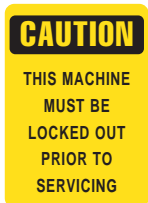
Available in: Red, Green, Blue, Yellow or White.

STANDARD PACKAGE (50 UNITS)

TO ORDER SPECIFY # ITEM, MATERIAL AND COLOR



# MAGNETIC LOCKOUT SIGNS



3 1/2" x 5" / 7" x 5" LKAI34



3 1/2" x 5" / 7" x 5" LKAI36



3 1/2" x 5" / 7" x 5" LKAI38



Magnetic signs stay put when placed on a metal surface and the magnetic material allows the signs to be moved to where employees attention is needed.

3 1/2" x 5" / 7" x 5" LKAI40

3 1/2" x 5" add suffix/3mg / 7" x 5" add suffix/4mg

# SELF-STICKING VINYL



2 1/4" x 4 1/2" LKAI24



2 1/4" x 4 1/2" LKAI22



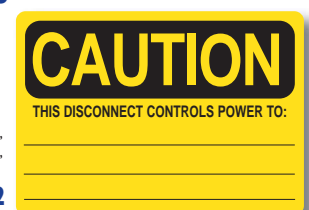
2 1/4" x 4 1/2" LKAI28



2 1/4" x 4 1/2" LKAI30



2 1/4" x 4 1/2" LKAI26



3 1/2" x 5" / 5" x 7" LKAI32

add suffix:  
2 1/4" x 2 1/4" /1SV  
3 1/2" x 5" /3SV  
5" x 7" /4SV

STANDARD PACKAGE (10 UNITS)