



# Short Sleeve SQUAD SUIT® and SQUAD SUIT® T-14



## Model SS63 Short Sleeve Squad Suit®

**Fabric:** 6.5 oz. per square yard SQUAD CLOTH™ 65% polyester/35% cotton

- pleated bi-swing back with elasticized waist
- heavy-duty, two-way brass zipper
- adjustable hook and loop belt closure
- two slanted breast pockets have zippers; left breast pocket has a pencil slot
- two inserted side pockets
- two rear patch pockets with a zipper on the left pocket
- large utility pocket on right leg
- side access to pants
- reinforced knees
- zippered leg bottoms with adjustable snaps
- loose badge tab (in pocket)

## Model SS60 Squad Suit® T-14

**Fabric:** 7.75 oz. per square yard SQUAD CLOTH™ 65% polyester/35% cotton

- pleated bi-swing back with elasticized waist
- heavy-duty, two-way brass zipper
- adjustable hook and loop belt closure
- two pleated breast pockets with flaps
- sleeve pockets on both sleeves
- two pleated cargo pockets on each leg
- reinforced knees
- side access to pants
- adjustable sleeve cuffs
- zippered leg bottoms with adjustable snaps
- loose badge tab (in pocket)

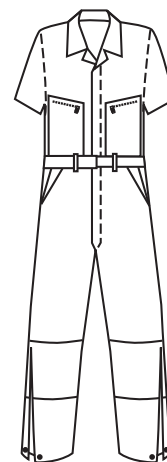
### SHORT SLEEVE SQUAD SUIT® SIZES:

	X-Small	Small	Medium	Large	X-Lrg	2X-Lrg	3X-Lrg	4X-Lrg
Sizes:	30-32	34-36	38-40	42-44	46-48	50-52	54-56	58-60
Short:	•	•	•	•	•			
Regular:	•	•	•	•	•	•	•	•
Tall:			•	•	•	•	•	•
X-Tall:			•	•	•	•		
Short:	5'4"-5'7"		5'7½"-5'11"		5'11½"-6'3"		6'3½"-6'6"	

### SQUAD SUIT® T-14 SIZES:

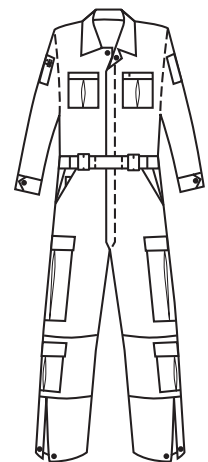
	Small	Medium	Large	X-Large	2X-Large	3X-Large
Sizes:	34-36	38-40	42-44	46-48	50-52	54-56
Short:	•	•	•	•		
Regular:	•	•	•	•	•	•
Tall:		•	•	•	•	•
X-Tall:		•	•	•	•	
Short:	5'4"-5'7"		5'7½"-5'11"		5'11½"-6'3"	
Regular:	5'7½"-5'11"		5'11½"-6'3"		6'3½"-6'6"	

SS63



Short Sleeve Squad Suit®

SS60



Squad Suit® T-14

1010  
Midnight

1110  
Midnight

1139  
Black