



Bulletin C-204B

Bell & Gossett



Model CHXS Heat Exchangers

**Fixed tube sheet
stainless steel heat exchangers**

- Liquid to Liquid
- Liquid to Gas
- Cooling and Heating

Part of the



Equipment Selection Programs

Bell & Gossett



ITT Industries
Engineered for life

BELL & GOSSETT COMPACT HEAT EXCHANGERS

CHXS the Standard in Stainless

Standard Construction Features

- 316 Stainless Steel Components
- NPT pipe thread connection on 2 thru 8 inch models.
- Flanged connections on 10 and 12 inch models
- Single, two or four pass on all models except 2 inch.
- Carbon steel bolting and support feet
- Enlarged full dispersion hubs
- Minimum baffle-shell and baffle-tube clearances
- Roller expanded tube to tubesheet joints
- Flanged baffle lips for tube support
- Compressed fiber gaskets
- 1/4" O.D. tubes on 2 and 3 inch models;
3/8" O.D. tubes on other models

Available Options

- ASME code on 4 thru 12 inch models
- Stainless steel bolts and support feet
- 1/4", 3/8" or 5/8" O.D. tubes
- Double tubesheets – leak detection
- Flanged connections
- SAE straight thread connections
- Polished tubeside to meet FDA requirements
- 304 Stainless materials
- Welded tube joints
- Teflon impregnated gaskets

Lowest Total Cost – When You Put It All Together:

- Production and scheduling savings from fast delivery
- Process consistency from predictable performance
- Low downtime because of maximized service life
- Low initial cost due to product standardization
- Low operating cost because of optimized selection

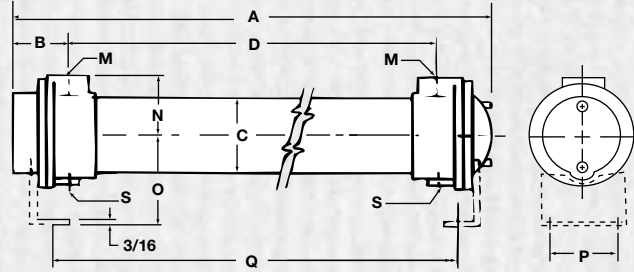
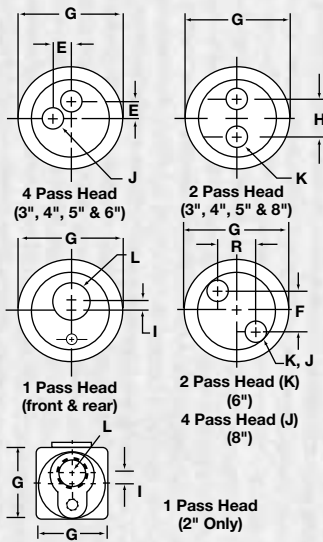


You'll Find CHXS Ideal For:

- Lubricating oil
- Hydraulic oil
- Heat transfer oil
- Vegetable oil
- Food product (Non FDA)
- Chemical process fluids
- Pharmaceutical fluids
- Air and gases
- Brine solutions
- Refrigerants
- Acids
- Steam
- Glycol solutions
- Hydrocarbons

**The result is the lowest total cost
stainless steel heat exchanger on the market**

TYPE CHXS HEAT EXCHANGERS DIMENSIONS



Tapping for zinc anodes – 3/8" NPT for CHXS 300 2P & 4P, 400 & 600
 – 1/2" NPT for CHXS 800
 – 1/4" NPT for CHXS 500

No zinc anode tapping for CHXS 200 & 300 1P.

	Tubeside	Shellside
Design Press.	150 PSI	225 PSI
Test Press.	225 PSI	338 PSI
Design Temp.	450°F	450°F

Materials of Construction**	
Heads – 316SS, Shell – 316SS	
Tube Sheets – 316SS, Shell Ends – 316SS	
Tubes – CHXS 200, 300 & 400 Series 1/4 in. 316SS	
CHXS 500, 600 & 800 Series 3/8 in. 316SS	

MODEL	AREA SQ. FT.	1 PASS		2 PASS		4 PASS		C IN.	D IN.	E IN.	F IN.	G IN.	H IN.	I IN.	J NPT	K NPT	L NPT	M NPT	N IN.	O IN.	P IN.	Q IN.	R IN.	S NPT	APPROX. WT.
		A IN.	B IN.	A IN.	B IN.	A IN.	B IN.																		
CHXS-208-*	1.2	10 ^{15/16}	2 ^{3/16}	-	-	-	-	2 ^{1/8}	6 ^{5/8}	-	-	2 ^{9/16}	-	3/8	-	-	3/4	†	1 ^{1/2}	-	-	-	-	-	6
CHXS-214-*	2.1	16 ^{15/16}	-	-	-	-	-	2 ^{1/8}	12 ^{5/8}	-	-	2 ^{9/16}	-	3/8	-	-	3/4	†	1 ^{1/2}	-	-	-	-	-	8
CHXS-308-*	2.4	11 ^{1/4}	2 ^{9/16}	10 ^{1/2}	2 ^{7/16}	10 ^{3/8}	2 ^{5/16}	3 ^{3/8}	6 ^{1/8}	1	-	4 ^{3/16}	2	3/8	3/4	1	1 ^{1/2}	1	2 ^{7/16}	2 ^{5/8}	3 ^{3/4}	7 ^{1/2}	-	3/8	12
CHXS-314-*	4.3	17 ^{1/4}	2 ^{9/16}	16 ^{1/2}	2 ^{7/16}	16 ^{3/8}	2 ^{5/16}	3 ^{3/8}	12 ^{1/8}	-	-	4 ^{3/16}	2	3/8	3/4	1	1 ^{1/2}	1	2 ^{7/16}	2 ^{5/8}	3 ^{3/4}	13 ^{1/2}	-	3/8	15
CHXS-324-*	7.3	27 ^{1/4}	2 ^{9/16}	26 ^{1/2}	2 ^{7/16}	26 ^{3/8}	2 ^{5/16}	3 ^{3/8}	22 ^{1/8}	-	-	4 ^{3/16}	2	3/8	3/4	1	1 ^{1/2}	1	2 ^{7/16}	2 ^{5/8}	3 ^{3/4}	23 ^{1/2}	-	3/8	20
CHXS-336-*	11	39 ^{1/4}	2 ^{9/16}	38 ^{1/2}	2 ^{7/16}	38 ^{3/8}	2 ^{5/16}	3 ^{3/8}	34 ^{1/8}	-	-	4 ^{3/16}	2	3/8	3/4	1	1 ^{1/2}	1	2 ^{7/16}	2 ^{5/8}	3 ^{3/4}	35 ^{1/2}	-	3/8	26
CHXS-414-*	8.3	18	3 ^{7/16}	17 ^{3/8}	3 ^{7/16}	17 ^{3/8}	3 ^{7/16}	4 ^{1/8}	11 ^{1/8}	1 ^{1/16}	-	5 ^{1/8}	2 ^{5/8}	1/2	3/4	1 ^{1/4}	2	1 ^{1/2}	3 ^{3/8}	3 ^{3/2}	3 ^{3/2}	12 ^{1/8}	-	3/8	41
CHXS-424-*	14.1	28	3 ^{7/16}	27 ^{3/8}	3 ^{7/16}	27 ^{3/8}	3 ^{7/16}	4 ^{1/8}	21 ^{1/8}	1 ^{1/16}	-	5 ^{1/8}	2 ^{5/8}	1/2	3/4	1 ^{1/4}	2	1 ^{1/2}	3 ^{3/8}	3 ^{3/2}	3 ^{3/2}	22 ^{1/8}	-	3/8	50
CHXS-436-*	21.1	40	3 ^{7/16}	39 ^{3/8}	3 ^{7/16}	39 ^{3/8}	3 ^{7/16}	4 ^{1/8}	33 ^{1/8}	1 ^{1/16}	-	5 ^{1/8}	2 ^{5/8}	1/2	3/4	1 ^{1/4}	2	1 ^{1/2}	3 ^{3/8}	3 ^{3/2}	3 ^{3/2}	34 ^{1/8}	-	3/8	60
CHXS-514-*	9.1	18 ^{1/2}	3 ^{11/16}	17 ^{15/16}	3 ^{11/16}	17 ^{15/16}	3 ^{9/16}	5 ^{1/8}	11 ^{1/8}	1 ^{1/16}	-	6 ^{1/2}	3	-	1	1 ^{1/2}	2 ^{1/2}	1 ^{1/2}	3 ^{3/8}	3 ^{3/2}	4	11 ^{1/4}	-	1/2	50
CHXS-524-*	15.7	28 ^{1/2}	3 ^{11/16}	27 ^{13/16}	3 ^{11/16}	27 ^{13/16}	3 ^{9/16}	5 ^{1/8}	21 ^{1/8}	1 ^{1/16}	-	6 ^{1/2}	3	-	1	1 ^{1/2}	2 ^{1/2}	1 ^{1/2}	3 ^{3/8}	3 ^{3/2}	4	21 ^{1/4}	-	1/2	60
CHXS-536-*	23.5	40 ^{1/2}	3 ^{11/16}	39 ^{13/16}	3 ^{11/16}	39 ^{13/16}	3 ^{9/16}	5 ^{1/8}	33 ^{1/8}	1 ^{1/16}	-	6 ^{1/2}	3	-	1	1 ^{1/2}	2 ^{1/2}	1 ^{1/2}	3 ^{3/8}	3 ^{3/2}	4	33 ^{3/4}	-	1/2	84
CHXS-624-*	23	28 ^{1/2}	4	28 ^{1/8}	4	28 ^{1/8}	4	6 ^{1/8}	20 ^{1/2}	2	-	7 ^{1/2}	3 ^{3/8}	-	1 ^{1/2}	2	3	2	4 ^{1/4}	4 ^{1/8}	5	21 ^{3/8}	-	1/2	80
CHXS-636-*	34	40 ^{1/2}	4	40 ^{1/8}	4	40 ^{1/8}	4	6 ^{1/8}	32 ^{1/2}	2	-	7 ^{1/2}	3 ^{3/8}	-	1 ^{1/2}	2	3	2	4 ^{1/4}	4 ^{1/8}	5	33 ^{3/8}	-	1/2	105
CHXS-648-*	46	52 ^{1/2}	4	52 ^{1/8}	4	52 ^{1/8}	4	6 ^{1/8}	44 ^{1/2}	2	-	7 ^{1/2}	3 ^{3/8}	-	1 ^{1/2}	2	3	2	4 ^{1/4}	4 ^{1/8}	5	45 ^{3/8}	-	1/2	130
CHXS-824-*	41	28 ^{1/2}	4	28	4	28	4	6 ^{1/8}	19 ^{1/4}	2	-	7 ^{1/2}	3 ^{3/8}	-	1 ^{1/2}	2	3	2	4 ^{1/4}	4 ^{1/8}	5	20 ^{1/8}	-	1/2	115
CHXS-836-*	62	40 ^{1/2}	4	40	4	40	4	6 ^{1/8}	31 ^{1/4}	2	-	7 ^{1/2}	3 ^{3/8}	-	1 ^{1/2}	2	3	2	4 ^{1/4}	4 ^{1/8}	5	32 ^{1/8}	-	1/2	200
CHXS-848-*	83	52 ^{1/2}	4	52	4	52	4	6 ^{1/8}	43 ^{1/4}	2	-	7 ^{1/2}	3 ^{3/8}	-	1 ^{1/2}	2	3	2	4 ^{1/4}	4 ^{1/8}	5	44 ^{1/8}	-	1/2	240
CHXS-860-*	103	64 ^{1/2}	4 ^{5/8}	64	4 ^{5/8}	64	4 ^{5/8}	8 ^{1/8}	55 ^{1/4}	-	2 ^{13/16}	9 ^{3/4}	4 ^{1/2}	-	2	2 ^{1/2}	3	3	5 ^{5/8}	5 ^{3/8}	7	56 ^{1/8}	5	3/4	280
CHXS-872-*	124	76 ^{1/2}	4 ^{5/8}	76	4 ^{5/8}	76	4 ^{5/8}	8 ^{1/8}	67 ^{1/4}	-	2 ^{13/16}	9 ^{3/4}	4 ^{1/2}	-	2	2 ^{1/2}	3	3	5 ^{5/8}	5 ^{3/8}	7	68 ^{1/8}	5	3/4	320
CHXS-884-*	145	88 ^{1/2}	4 ^{5/8}	88	4 ^{5/8}	88	4 ^{5/8}	8 ^{1/8}	79 ^{1/4}	-	2 ^{13/16}	9 ^{3/4}	4 ^{1/2}	-	2	2 ^{1/2}	3	3	5 ^{5/8}	5 ^{3/8}	7	80 ^{1/8}	5	3/4	360
CHXS-896-*	166	100 ^{1/2}	4 ^{5/8}	100	4 ^{5/8}	100	4 ^{5/8}	8 ^{1/8}	91 ^{1/4}	-	2 ^{13/16}	9 ^{3/4}	4 ^{1/2}	-	2	2 ^{1/2}	3	3	5 ^{5/8}	5 ^{3/8}	7	92 ^{1/8}	5	3/4	400

* No. of passes, either 1, 2, or 4. Baffle Spacing, either S or L.

** Consult factory on the availability of optional materials, variations in unit length, and design, available on some models. CHXS 1000 & 1200 series units are available.

† 1/2" NPT with S baffle spacing; 1" NPT with L baffle spacing.

Dimensions subject to change without notice.

Use only certified drawings for construction purposes.

BELL & GOSSETT PRODUCTS

Stocked ... Sold ... Serviced EVERYWHERE!

FOR MORE DETAILS CALL YOUR LOCAL BELL & GOSSETT REPRESENTATIVE

ALABAMA

Mangham & Associates, Inc.
Irontdale
Phone: 205/956-2362
FAX: 205/956-2477

ALASKA

Larry Harrington Co., Inc.
Bellevue (Seattle) WA
Phone: 206/455-0800
FAX: 206/455-4640

ARIZONA

J & B Sales Company
Phoenix
Phone: 602/258-1545
FAX: 602/258-9719

ARKANSAS

Johnson & Scott, Inc.
Little Rock
Phone: 501/370-5050
FAX: 501/370-5051
Hydronic Technology Inc.
Shreveport, LA
Phone: 318/797-1500
FAX: 318/797-1509

Boone & Boone Sales Co., Inc.
Tulsa, OK
Phone: 918/664-9756
FAX: 918/664-1675

CALIFORNIA

California Hydronics Corp.
Hayward (San Francisco)
Phone: 510/293-1993
FAX: 510/293-3080
Roseville
Phone: 916/773-1908
FAX: 916/773-1910

DAWSON CO.

Altadena (Los Angeles)
Phone: 626/797-9710
FAX: 626/798-4659
San Diego
Phone: 619/541-7867
FAX: 619/541-0333

COLORADO

McNevin Company
Denver
Phone: 303/322-0165
FAX: 303/322-0374

CONNECTICUT

The Bernard M. Packtor Co.
Hamden (New Haven)
Phone: 203/288-5241
FAX: 203/287-1798

DELAWARE

R. D. Bitzer Co., Inc.
Elkins Park (Philadelphia), PA
Phone: 215/635-2818
FAX: 215/635-0615
Cummins-Wagner Co., Inc.
Annapolis Junction, MD
Phone: 800/966-1277
FAX: 301/490-7156

FLORIDA

George A. Israel Jr., Inc.
Jacksonville
Phone: 904/355-7867
FAX: 904/355-0077
Miami
Phone: 305/592-5343
FAX: 305/591-4356
Orlando
Phone: 407/423-5078
FAX: 407/423-0918
Tallahassee
Phone: 904/656-2055
FAX: 904/656-1475
Tampa
Phone: 813/839-2161
FAX: 813/832-3182
West Palm Beach
Phone & FAX: 407/640-4131

GEORGIA

Clary & Associates, Inc.
Atlanta
Phone: 404/873-1861
FAX: 404/873-1867

George A. Israel Jr., Inc.
Jacksonville, FL
Phone: 904/355-7867
FAX: 904/355-0077
Tallahassee, FL
Phone: 904/656-2055
FAX: 904/656-1475

HAWAII

Dawson Co.
Altadena (Los Angeles) CA
Phone: 626/797-9710
FAX: 626/798-4659

IDAHO

Gritton & Associates, Inc.
Salt Lake City, UT
Phone: 801/486-0767
FAX: 801/485-6364

Larry Harrington Co., Inc.
Portland, OR
Phone: 503/228-4324
FAX: 503/228-0219

ILLINOIS

Bornquist, Inc.
Chicago
Phone: 773/774-2800
FAX: 773/763-6534

Blackmore & Glunt, Inc.
Maryland Hgts. (St. Louis) MO
Phone: 314/878-4313
FAX: 314/878-6029

SANDBERG CO., INC.

East Moline
Phone: 309/796-2371
FAX: 309/796-2330

Hydronic & Steam Equip. Co., Inc.
Indianapolis, IN
Phone: 800/669-4926
FAX: 317/577-7109

INDIANA

Hydronic & Steam Equip. Co., Inc.
Evansville
Phone: 800/473-2753
FAX: 812/479-7650

Ft. Wayne
Phone: 219/489-5785
FAX: 219/489-4369

Indianapolis
Phone: 800/669-4926
FAX: 317/577-7109

South Bend
Phone: 800/932-6490
FAX: 219/234-6611

Bornquist, Inc.
Griffith
Phone: 773/774-2800

Blackmore & Glunt, Inc.
Cincinnati, OH
Phone: 513/489-5225
FAX: 513/489-8755

IOWA

Products, Inc.
Des Moines
Phone: 515/288-5738
FAX: 515/288-2574

Sandberg Co., Inc.
East Moline, IL
Phone: 309/796-2371
FAX: 309/796-2330

Verne Simmonds Co.
Omaha, NE
Phone: 402/592-3131
FAX: 402/592-0853

KANSAS

Blackmore & Glunt, Inc.
Lenexa (Kansas City)
Phone: 913/469-5715
FAX: 913/469-1085

KENTUCKY

Blackmore & Glunt, Inc.
Cincinnati, OH
Phone: 513/489-5225
FAX: 513/489-8755

Hydronic & Steam Equip. Co., Inc.
Evansville, IN
Phone: 800/473-2753
FAX: 812/479-7650

Johnson & Scott, Inc.
Nashville, TN
Phone: 615/254-5454
FAX: 615/242-9243

LOUISIANA

Hydronic Technology Inc.
New Orleans
Phone: 504/827-1163
FAX: 504/827-1167
Shreveport
Phone: 318/797-1500
FAX: 318/797-1509

MAINE

F.I.A., Inc.
Woburn (Boston) MA
Phone: 781/938-8900
FAX: 781/933-3965

MARYLAND

Cummins-Wagner Co., Inc.
Annapolis Junction
Phone: 800/966-1277
FAX: 301/490-7156

Thermoflo Equipment Co., Inc.
Pittsburgh, PA
Phone: 412/366-2012
FAX: 412/367-0842

MASSACHUSETTS

F.I.A., Inc.
Woburn (Boston)
Phone: 781/938-8900
FAX: 781/933-3965

The Bernard M. Packtor Co.
Hamden (New Haven) CT
Phone: 203/288-5241
FAX: 203/287-1798

Albany, NY
Phone: 518/459-1060
FAX: 518/458-8776

MICHIGAN

R. L. Deppmann Co.
Southfield (Detroit)
Phone: 248/354-3710
FAX: 248/354-3763

Grand Rapids
Phone: 616/656-0821
FAX: 616/656-0830

Saginaw
Phone: 517/777-2960
FAX: 517/777-5061

Hydro-Flo Products, Inc.
Brookfield (Milwaukee) WI
Phone: 414/781-2810
FAX: 414/781-2228

MINNESOTA

Bernard J. Mulcahy Co., Inc.
Bloomington
Phone: 612/854-3621
FAX: 612/854-7586

MISSISSIPPI

Hydronic Technology Inc.
New Orleans, LA
Phone: 504/827-1163
FAX: 504/827-1167

Johnson & Scott, Inc.
Little Rock, AR
Phone: 501/370-5050
FAX: 501/370-5051

MISSOURI

Blackmore & Glunt, Inc.
Lenexa (Kansas City) KS
Phone: 913/469-5715
FAX: 913/469-1085

Maryland Hgts. (St. Louis)
Phone: 314/878-4313
FAX: 314/878-6029

MONTANA

Larry Harrington Co., Inc.
Spokane, WA
Phone: 509/325-1654
FAX: 509/325-6838

NEBRASKA

Verne Simmonds Co.
Omaha
Phone: 402/592-3131
FAX: 402/592-0853

NEVADA

Dawson Co.
Las Vegas, NV
Phone: 702/735-1226
FAX: 702/735-1232

Gritton & Associates, Inc.
Salt Lake City, UT
Phone: 801/486-0767
FAX: 801/485-6364

NEW HAMPSHIRE

F.I.A., Inc.
Woburn (Boston) MA
Phone: 781/938-8900
FAX: 781/933-3965

NEW JERSEY

Wallace-Eannace Assoc., Inc.
Franklin Lakes
Phone: 201/891-9550
FAX: 201/891-4298

R. D. Bitzer Co., Inc.
Elkins Park (Philadelphia), PA
Phone: 215/635-2818
FAX: 215/635-0615

NEW MEXICO

Boyd Engineering Co., Inc.
Albuquerque
Phone: 505/275-1250
FAX: 505/275-1193

NEW YORK

Wallace-Eannace Assoc., Inc.
Plainview
Phone: 516/454-9300
FAX: 516/454-9307

Frank P. Langley Co., Inc.
Rochester
Phone: 716/248-5010
FAX: 716/381-0512

Amherst (Buffalo)
Phone: 716/691-7575
FAX: 716/691-7347

The Bernard M. Packtor Co.
Albany
Phone: 518/459-1060
FAX: 518/458-8776

Syracuse Thermal Products, Inc.
East Syracuse
Phone: 315/437-7321
FAX: 315/437-7429

NORTH CAROLINA

James M. Pleasants Co., Inc.
Greensboro
Phone: 336/378-9911
FAX: 336/378-2588

NORTH DAKOTA

Bernard J. Mulcahy Co., Inc.
Bloomington, MN
Phone: 612/854-3621
FAX: 612/854-7586

OHIO

Blackmore & Glunt, Inc.
Cincinnati
Phone: 513/489-5225
FAX: 513/489-8755

Omni-Flow, Inc.
Macedonia (Cleveland)
Phone: 330/468-1102
FAX: 330/468-1113

Steffens-Shultz, Inc.
Columbus
Phone: 614/274-5515
FAX: 614/274-0126

Dayton
Phone: 937/278-7903
FAX: 937/278-7825

OHIO (Cont'd.)

Thermoflo Equipment Co., Inc.
Pittsburgh, PA
Phone: 412/366-2012
FAX: 412/367-0842

OKLAHOMA

Boone & Boone Sales Co., Inc.
Oklahoma City
Phone: 405/525-7475
FAX: 405/521-1448

Tulsa
Phone: 918/664-9756
FAX: 918/664-1675

OREGON

Larry Harrington Co., Inc.
Portland
Phone: 503/228-4324
FAX: 503/228-0219

PENNSYLVANIA

R. D. Bitzer Co., Inc.
Elkins Park (Philadelphia)
Phone: 215/635-2818
FAX: 215/635-0615

Thermoflo Equipment Co., Inc.
Pittsburgh
Phone: 412/366-2012
FAX: 412/367-0842

Frank P. Langley Co., Inc.
Amherst (Buffalo) NY
Phone: 716/691-7575
FAX: 716/691-7347

RHODE ISLAND

F.I.A., Inc.
Woburn (Boston) MA
Phone: 781/938-8900
FAX: 781/933-3965

SOUTH CAROLINA

James M. Pleasants Co., Inc.
Greensboro, NC
Phone: 336/378-9911
FAX: 336/378-2588

SOUTH DAKOTA

Bernard J. Mulcahy Co., Inc.
Bloomington, MN
Phone: 612/854-3621
FAX: 612/854-7586

Verne Simmonds Co.
Omaha, NE
Phone: 402/592-3131
FAX: 402/592-0853

TENNESSEE

Johnson & Scott, Inc.
Nashville
Phone: 615/254-5454
FAX: 615/242-9243

Memphis
Phone: 901/345-3404
FAX: 901/345-8522

Clary & Associates, Inc.
Atlanta, GA
Phone: 404/873-1861
FAX: 404/873-1867

TEXAS

Boyd Engineering Co., Inc.
Albuquerque, NM
Phone: 505/275-1250
FAX: 505/275-1193

Oslin Nation Company
Austin
Phone: (512) 306-1672
FAX: (512) 306-1673

Dallas
Phone: 214/631-5650
FAX: 972/988-1446

Sugar Land
Phone: 281/240-6950
FAX: 281/240-6957

TEXAS (Cont'd.)

Oslin Nation Company (Cont'd.)
San Antonio
Phone: 210/342-5544
FAX: 210/342-2818

Therm/Mech Sales

Lubbock
Phone: 806/763-5411
FAX: 806/763-7036

UTAH

Gritton & Associates, Inc.
Salt Lake City
Phone: 801/486-0767
FAX: 801/485-6364

VERMONT

F.I.A., Inc.
Woburn (Boston) MA
Phone: 781/938-8900
FAX: 781/933-3965

The Bernard M. Packtor Co.
Albany, NY
Phone: 518/459-1060
FAX: 518/458-8776

VIRGINIA

TLA, Inc.
Richmond
Phone: 804/321-4444
FAX: 804/321-3112

Virginia Beach
Phone: 757/497-3567
FAX: 757/490-7362

Cummins-Wagner Co., Inc.
Annapolis Junction, MD
Phone: 800/966-1277
FAX: 301/490-7156

WASHINGTON

Larry Harrington Co., Inc.
Bellevue (Seattle)
Phone: 425/455-0800
FAX: 425/455-4640

Spokane
Phone: 509/325-1654
FAX: 509/325-6838

WASHINGTON, DC

Cummins-Wagner Co., Inc.
Annapolis Junction, MD
Phone: 301/792-4230
FAX: 301/490-7156

WEST VIRGINIA

Blackmore & Glunt, Inc.
Cincinnati, OH
Phone: 513/489-5225
FAX: 513/489-8755

TLA, Inc.
Richmond, VA
Phone: 804/321-4444
FAX: 804/321-3112

Thermoflo Equipment Co., Inc.
Pittsburgh, PA
Phone: 412/366-2012
FAX: 412/367-0842

WISCONSIN

Hydro-Flo Products, Inc.
Brookfield (Milwaukee)
Phone: 414/781-2810
FAX: 414/781-2228

Bernard J. Mulcahy Co., Inc.
Bloomington, MN
Phone: 612/854-3621
FAX: 612/854-7586

WYOMING

Gritton & Associates, Inc.
Salt Lake City, UT
Phone: 801/486-0767
FAX: 801/485-6364

J. E. McNevin Co.
Denver, CO
Phone: 303/322-0165
FAX: 303/322-0374



Bell & Gossett

USA

Bell & Gossett Heat Transfer Products
175 Standard Parkway
Cheektowaga, NY 14227
Phone: (716) 862-4171
Facsimile: (716) 862-4176
<http://fhs.ittind.com>

INTL.

Bell & Gossett / Export Dept.
8200 N. Austin Avenue
Morton Grove, IL 60053
Phone: (847) 966-3700
Facsimile: (847) 966-8366
Cable: BELGOSSETT

CANADA

Fluid Products Canada
55 Royal Road
Guelph, Ontario,
N1H 1T1, Canada
Phone: (519) 821-1900