

TOP VIEW

BOTTOM VIEW

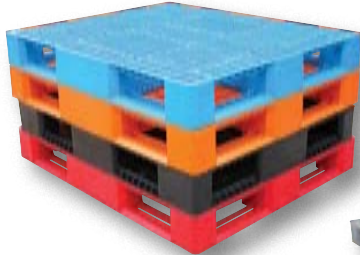


NON-SKID GROMMET

Plastic Pallet/Skid

This innovative design unites two essential product features; capacity and versatility. Pallet/Skid entry provides 4-way entry, 2-way by pallet truck and 4-way by a fork truck. The uniform supported capacity is 4,000 pounds. Features anti-slide grommets which prevent the pallets from sliding off the forks and each other during transit.

MODEL NUMBER	UNIFORM SUPPORTED CAPACITY (LBS.)	OVERALL SIZE (W x L x H)	FORK OPENING (W x H)	SKID OPENING (W x H)	NET WT. (POUNDS)
PLPS-4840	4,000	39½" x 47¼" x 6"	11¾" x 3¼"	10½" x 3¾"	44



series PLP2
AVAILABLE IN BLUE
ORANGE, BLACK AND RED

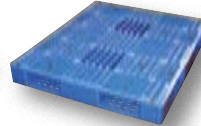
Plastic Pallets and Skids



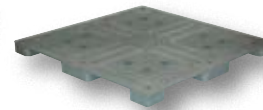
Stackable for efficient storage. Made of virgin polyethylene for longer life. Pallets are maintenance free and safer to handle than wooden pallets. Feature four-way entry. Serrated deck with holes for drainage. Plastic pallets are ideal for export, pharmaceutical, medical, and food applications. No steel inserts - not for use in unsupported pallet rack, except for model PLPR-4840.



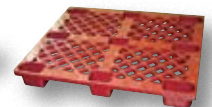
PLPG-4848



PLPBL-5143



PLPS-4848



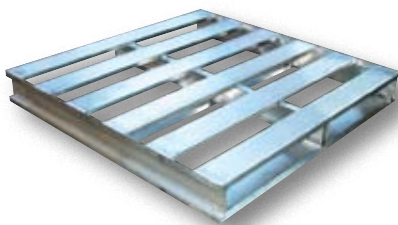
SKID-20

MODEL NUMBER	DESCRIPTION	UNIFORM SUPPORTED CAPACITY (LBS.)	OVERALL SIZE (W x L x H)	FORK OPENINGS (W x H)	NET WT. (POUNDS)
PLP2-4840-BLUE	BLUE PALLET	4,000	48" x 40" x 6"	9¾" x 4"	38
PLP2-4840-ORANGE [Ⓞ]	ORANGE PALLET	4,000	48" x 40" x 6"	9¾" x 4"	38
PLP2-4840-BLACK	BLACK PALLET	4,000	48" x 40" x 6"	9¾" x 4"	38
PLP2-4840-RED	RED PALLET	4,000	48" x 40" x 6"	9¾" x 4"	38
PLPG-4848 [Ⓞ]	GREY PALLET	3,500	48" x 48" x 6"	12½" x 3½"	65
PLPG-4848-HD* [Ⓞ]	GREY PALLET	4,500	48" x 48" x 6"	12½" x 3½"	72
PLPB-4840**	BLACK PALLET	4,000	48" x 40" x 5½"	8½" x 3½"	38
PLPBL-5143**	BLUE PALLET	4,000	51¼" x 43½" x 5½"	10" x 3½"	40
PLPR-4840†	GREY RACKABLE PALLET	see below (†)	48" x 40" x 6"	8¾" x 3¼"	55
PLPS-4848 [Ⓞ]	GREY SKID	2,500	48" x 48" x 2¾"	12½" x 2"	36
SKID-20	RED SKID	2,000	39½" x 47¼" x 5½"	12" x 4"	20

*NOT PALLET TRUCK USABLE (NOT SHOWN)

**ANTI-SLIDE GROMMETS INCLUDED IN FORK POCKETS AND ON TOP/BOTTOM OF PALLET - PREVENTS PALLET FROM SLIDING DURING TRANSPORTATION

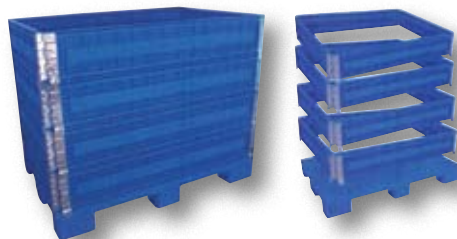
†RACKABLE PALLET - 10,000 LBS. STATIC / 3,700 LBS. DYNAMIC / 2,200 LBS. RACKING CAPACITY (NOT SHOWN)



Aluminum Pallets

This is the pallet the food and chemical industries have always wanted. Easy to clean with a power washer. Stands up to high-power steam, brushes, or pads. Features a non-skid surface for easy transportation of all products. Durable and re-usable. Heavy-duty welded aluminum construction.

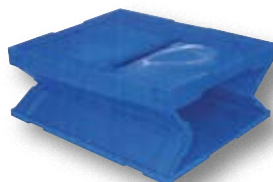
MODEL NUMBER	UNIFORM SUPPORTED CAPACITY (POUNDS)	OVERALL SIZE (W x L x H)	FORK OPENINGS (W x H)	NET WT. (POUNDS)
AP-4248	6,000	42" x 48" x 6"	19" x 4-3/8"	40
AP-4848	6,000	48" x 48" x 6"	22" x 4-3/8"	50



Multi-Height Container

Increase flexibility and accessibility with this Multi-Height Container. As the user loads or unloads the height can be increased or decreased. Constructed of polyethylene plastic with steel hinges. Four way pallet increases convenience.

MODEL NUMBER	DESCRIPTION	OUTSIDE DIMENSIONS (W x D x H)	NET WT. (POUNDS)
MULTI-C	MULTI-HEIGHT CONTAINER	47¼" x 31½" x 37½"	95



Folding Container

Requires a minimum of storage space when not in use.

MODEL NUMBER	OUTSIDE DIMENSIONS (W x D x H)	FOLDED HEIGHT	NET WT. (POUNDS)
F-CRATE	23½" x 18½" x 12"	3"	8