

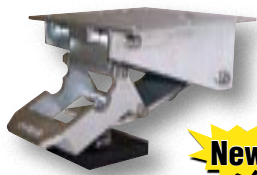


Suction cup bottom pad helps secure unit

Adjustable Height Floor Locks

This one of a kind floor lock includes an adjustable height foot pad that will work on carts with different caster heights. The adjustable height feature provides uniform locking and safety unlocking force for better ergonomic operation. This feature also keeps the floor lock working properly as spring and pads wear over time. Height is adjustable by turning the bottom pad. This unit has a bright zinc plated finish with heavy-duty cast steel construction. The bottom pad includes suction-cups for extra grip.

MODEL NUMBER	EXTENDED HEIGHT	RETRACTED HEIGHT	USED WITH CASTER SIZE	NET WT. (LBS.)
FL-ADJ-46	5½" to 7¾"	4½" to 6¾"	4" - 6"	9
FL-ADJ-810	8¼" to 11½"	6¼" to 9½"	8" - 10"	11



Low Profile Floor Lock

The lowest-profile floor lock available on the market today. Features adjustable-height pad for precision and wearability, simply bolt to bottom of cart. Foot operated.

MODEL NUMBER	EXTENDED HEIGHT	RETRACTED HEIGHT	NET WT. (LBS.)
FL-LK-LP	4-1/2"	3-7/8"	8



General Purpose Floor Locks

Floor Locks may be used on platform trucks, fixture dollies, or equipment with casters. Simple foot pressure immobilizes equipment. Locks when large friction face is pressed against the floor. To release simply kick release rod. Brake is independent of casters and can be installed to any convenient location on the cart.

The Side Mounted Floor Lock automatically locks when operator pushes pedal down. The spring loaded pad accommodates uneven floors. Units mount with pad 1½" off the floor when retracted. Vertical mounting plate designed to mount to sides of carts and other portable products.



SIDE MOUNTED FLOOR LOCK model FL-LK-SMR

MODEL NUMBER	MOUNTING HEIGHT	RETRACTED HEIGHT	USED WITH CASTER SIZE	NET WT. (LBS.)
FL-LK-5E	6-1/2"	5-1/4"	5"	4
FL-LK-7X	7-1/4"	6-1/4"	6"	12
FL-LK-7G	7-3/4"	6-3/4"	6"	12
FL-LK-10	9-15/16"	8-7/8"	8"	19
FL-LK-S	7-3/8"	4-1/8"	6"	12
FL-LK-SMR	10-15-1/2"	16"	(2" of Travel)	9



Leveling Jacks

Designed for permanent installation, these screw-style jacks hold platforms and other equipment in place and stabilize them at the required height. Drill a 1¼" diameter hole through the platform to be leveled and bolt the platform between the upper and lower flanges of the jack's divided housing. Flanges are 3-3/8" overall diameter, 1/8" thick, and have (6) ¼" diameter mounting holes equally spaced on a 3" diameter hole pattern. Capacity is 5,000 pounds.

Jacks are made of steel with a polished chrome finish and have an 8½" long handle that folds down when not in use. They stand on a 3-7/8" diameter swivel base that has a slip-resistant rubber pad on the bottom. Screw diameter is 1¼". Lift rate is ¼" per crank revolution.

MODEL NUMBER	MINIMUM EXTENDED HEIGHT	MAXIMUM EXTENDED HEIGHT	OVERALL HEIGHT	SCREW TRAVEL	NET WT. (LBS.)
LJ-9	4½"	13½"	18"	9"	11
LJ-17	4½"	21½"	26"	17"	14
LJ-21	4½"	25½"	30"	21"	16



model FJB-36 shown

Basement Floor Jacks

Provide extra support for leveling and stabilizing floor beams and joists during construction and repairs. Telescopic style with removable pins lets you properly position the brace for better leveling. End pad includes a screw and turning bar for easy height adjustment. Rugged all welded steel construction. Red oxide finish.

MODEL NUMBER	MINIMUM HEIGHT	MAXIMUM HEIGHT	MINIMUM HEIGHT CAPACITY (LBS.)	MAXIMUM HEIGHT CAPACITY (LBS.)	NET WT. (LBS.)
FJB-16	12"	16"	19,475	19,475	7
FJB-36	19"	36"	19,475	13,725	12
FJB-100	54"	100"	16,875	11,200	26
FJB-150	54"	150"	22,175	5,175	37