

## Pipe Safety Railings

Protect people from uneven walkways and mezzanine drop off's. These durable railings are made of schedule 40 pipe (1-5/8" O.D.). Handrails are 42" high with a 21" mid-rail. Mounting options include socket sleeves, cast steel base, barricade base, or cast steel sockets for convenient handrail removal. The cast steel sockets accept wood 2" x 4" or 2" x 6" when toe boards are required. The cast steel base has two lag down holes for permanently mounting the railing. There are two open cavities to allow for 2" x 4" or 2" x 5" toe boards. Steel railing features powder coat safety yellow finish.

STEEL CONSTRUCTION					
MODEL NUMBER	TOP RAIL HEIGHT	MIDRAIL HEIGHT	LENGTH	OUTSIDE DIAMETER	NET WT. (POUNDS)
VDKR-2 <sup>Ⓢ</sup>	42"	21"	24"	1-5/8"	18/UPS
VDKR-3 <sup>Ⓢ</sup>	42"	21"	36"	1-5/8"	23/UPS
VDKR-4 <sup>Ⓢ</sup>	42"	21"	48"	1-5/8"	28
VDKR-5 <sup>Ⓢ</sup>	42"	21"	60"	1-5/8"	33
VDKR-6 <sup>Ⓢ</sup>	42"	21"	72"	1-5/8"	38
VDKR-7 <sup>Ⓢ</sup>	42"	21"	84"	1-5/8"	43
VDKR-8 <sup>Ⓢ</sup>	42"	21"	96"	1-5/8"	48

ALUMINUM CONSTRUCTION					
MODEL NUMBER	TOP RAIL HEIGHT	MIDRAIL HEIGHT	LENGTH	OUTSIDE DIAMETER	NET WT. (POUNDS)
ADKR-2	42"	21"	24"	1-5/8"	9/UPS
ADKR-3	42"	21"	36"	1-5/8"	10/UPS
ADKR-4	42"	21"	48"	1-5/8"	11
ADKR-5	42"	21"	60"	1-5/8"	13
ADKR-6	42"	21"	72"	1-5/8"	15
ADKR-7	42"	21"	84"	1-5/8"	16
ADKR-8	42"	21"	96"	1-5/8"	18

PIPE SAFETY RAILING OPTIONS		
MODEL NUMBER	DESCRIPTION	NET WT. (POUNDS)
VDKR-P101 <sup>Ⓢ</sup>	SINGLE SOCKET (FOUR BOLT HOLES)	7
VDKR-P102 <sup>Ⓢ</sup>	DOUBLE SOCKET (FOUR BOLT HOLES)	12
VDKR-BASE	CAST STEEL BASE	115
VDKR-P107	4" METAL SLEEVE	2
VDKR-BB-F <sup>Ⓢ</sup>	BARRICADE BASE WITH FEET	7
VDKR-BB-W	BARRICADE BASE WITH WHEELS	7
VDKR-G3 <sup>Ⓢ</sup>	THREE FOOT STEEL GATE	23
VDKR-G4 <sup>Ⓢ</sup>	FOUR FOOT STEEL GATE	35
VDKR-KIT <sup>Ⓢ</sup>	ANCHOR BOLTS FOR CONCRETE (4) 3/8" x 2 1/2"	4
VDKR-CON	CONNECTOR KIT	7

RAILING OPTIONS WORK WITH BOTH STEEL & ALUMINUM RAILING

## Crowd Control Interlocking Barriers

Lightweight one-piece handrail is attractive and functional. Interlocking portable railing has many commercial and industrial applications. Easy to move to meet changing needs. Upright bars are vertically spaced at 5/4" intervals. Includes connectors to attach multiple units together to form long runs. Overall size is 102"L x 40"H. All welded steel construction available with a galvanized or yellow powder coat finish. Suffix-HD denotes heavy duty construction.

MODEL NUMBER	FINISH	RAIL DIAMETER	NET WT. (POUNDS)
PRAIL-102-G	GALVANIZED	1-1/4"	36
PRAIL-102-HD-G	GALVANIZED	1-5/8"	56
PRAIL-102-Y	YELLOW POWDER COAT	1-1/4"	36
PRAIL-102-HD-Y	YELLOW POWDER COAT	1-5/8"	56

## Stainless Steel Railing

Keep guests flowing in restaurants, schools, offices or other indoor, and outdoor applications. The unique contemporary design offers a clean look wherever the railing is placed. The free standing units won't rust. Railing includes weighted round base feet, which may easily be removed for storage, and chain interlocking system for attaching multiple units together to form long runs.

MODEL NUMBER	LENGTH	HEIGHT	BASE DIAMETER	NET WT. (POUNDS)
SSRAIL-96 <sup>Ⓢ</sup>	96"	42"	12"	55



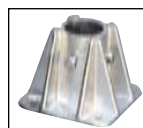
STEEL PIPE SAFETY RAILING • series VDKR shown with optional sockets



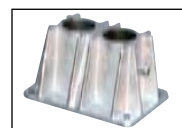
CONNECTOR KIT Includes (2) male & (2) female connectors model VDKR-CON



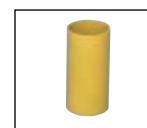
ALUMINUM PIPE SAFETY RAILING series ADKR shown with optional sockets



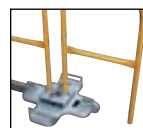
SINGLE SOCKET for surface mounting, accepts wood for toeboards. model VDKR-P101



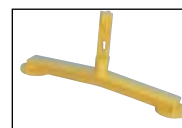
DOUBLE SOCKET for surface mounting. Sockets are 4" high and hold two posts. model VDKR-P102



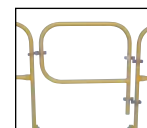
METAL SLEEVE is used for concrete mount. Measures 4"H x 2" O.D. model VDKR-P107



PERMANENT/ PORTABLE BASE designed to meet OSHA temporary floor edge and roof railing requirements (OSHA 1926.500) model VDKR-BASE



BARRICADE BASE WITH FEET model VDKR-BB-F



3 or 4 FOOT GATE model VDKR-G3 model VDKR-G4 Hardware Included



model PRAIL-102-G



model PRAIL-102-Y



PROTECTIVE BARRIERS