

DVD or VIDEO AVAILABLE

LINE-X
Custom Finish Available

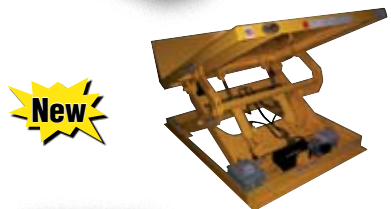
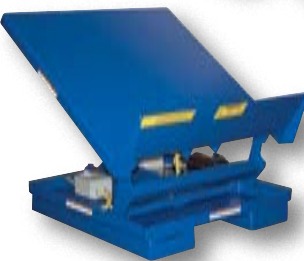


DVD or VIDEO AVAILABLE

model UNI-4848-4



model UNI-9648-4



New

Zero Lift & Tilt Tables

Designed to lift or tilt products to an ergonomic working position, reducing operator bending. Products may be loaded and unloaded with the use of a standard hand pallet truck. No pit mounting required! Maximum tilt angle is 45°. Lift and tilt controlled separately. Remote power unit with hand-held control standard.

MODEL NUMBER	PLATFORM SIZE (W x L)	CAPACITY (POUNDS)	RAISED HEIGHT	OVERALL SIZE (W x L x H)	NET WT. (POUNDS)
ZLTT-4452-2-36	44" x 52"	2,000	36"	69" x 59" x 24"	2121
ZLTT-4452-4-36	44" x 52"	4,000	36"	69" x 59" x 24"	2173
ZLTT-5252-2-36	52" x 52"	2,000	36"	77" x 59" x 24"	2205
ZLTT-5252-4-36	52" x 52"	4,000	36"	77" x 59" x 24"	2257
ZLTT-4472-2-48	44" x 72"	2,000	48"	69" x 79" x 24"	2950
ZLTT-4472-4-48	44" x 72"	4,000	48"	69" x 79" x 24"	3013
ZLTT-5272-2-48	52" x 72"	2,000	48"	77" x 79" x 24"	3045
ZLTT-5272-4-48	52" x 72"	4,000	48"	77" x 79" x 24"	3129

FOOT CONTROL, MODEL ZLTT-FC
RAISED HEIGHT NOTED WITH PLATFORM IN LEVEL POSITION

Single Scissor Lift & Tilt Tables

Designed to position containers within easy reach of assembly line workers and machine operators. This unique design reduces fatigue by minimizing repetitive bending and stretching required to obtain components from containers. 96" x 48" unit accommodates (2) 48" x 48" containers, ideal for parts transfer and assembly. Platform includes a 12" high lip on tilt side. A selector pedal allows the operator to lift while tilting, or tilt then lift. 2HP, 208-230/460V, 3-phase, 60 Hz totally enclosed motor is standard, other voltages available. Other standard features include: a two-button handheld control, integrated maintenance lock, pressure plated pump, pressure compensated flow valve, lowering valve, independent oil return, and an adjustable upward travel limit switch. Unit must be lagged to floor.

MODEL NUMBER	PLATFORM SIZE (W x L)	CAPACITY (POUNDS)	LEVEL HEIGHT	MAXIMUM TILT	POWER UNIT	NET WT. (POUNDS)
UNI-4848-4	48" x 48"	4,000	8"	40°	INTERNAL	792
UNI-5448-4	54" x 48"	4,000	8"	40°	INTERNAL	870
UNI-9648-4	96" x 48"	4,000	8"	40°	INTERNAL	1584
UNI-4848-6	48" x 48"	6,000	8"	40°	INTERNAL	915
UNI-5448-6	54" x 48"	6,000	8"	40°	INTERNAL	950

AIR BAG UNI-TILT AVAILABLE, CONTACT FACTORY
THREE SIDED ACCORDION SKIRT AVAILABLE, CONTACT FACTORY

Portable Uni-Tilts

Now you can transport your tilter from workstation to workstation quickly and easily with a fork truck. This unique design reduces fatigue by minimizing repetitive bending and stretching required to obtain components from containers. Platform includes a 12" high lip on tilt side. A selector pedal allows the operator to lift while tilting or tilt then lift. 2HP, 208-230/460V, 3PH AC power unit with hand pendant control is standard, other voltages available. Features the same standard features as our original Single Scissor Lift and Tilt Table above.

MODEL NUMBER	PLATFORM SIZE (W x L)	CAPACITY (POUNDS)	LEVEL HEIGHT	MAXIMUM TILT	POWER UNIT	NET WT. (POUNDS)
UNI-P-4848-4	48" x 48"	4,000	12"	40°	INTERNAL	1197
UNI-P-5448-4	54" x 48"	4,000	12"	40°	INTERNAL	1241

USABLE FORK POCKETS ARE 7½"W x 2½"H

Lift & Tilt Workstation Tables

Design of unit allows platform to lift & tilt at the same time for easy operation. Maximum tilt angle is 45° for better ergonomics and operator comfort. Service height range is 10" to 24" (to lowest point of platform surface). Platform end includes 12" high full-width lip to support containers. Internal power unit includes electric motor, hydraulic pump, and control box. Operates with 24V AC hand control on 8 ft. cord. Choose 115/230V single phase or 208/230/460V three phase power. Welded steel construction with yellow painted finish.

MODEL NUMBER	PLATFORM SIZE (W x L)	CAPACITY (POUNDS)	CYLINDERS	MAXIMUM TILT	NET WT. (POUNDS)
ULTT-3648-2	36" x 48"	2,000	1	45°	860
ULTT-4848-2	48" x 48"	2,000	1	45°	1060
ULTT-5448-2	54" x 48"	2,000	1	45°	1095
ULTT-3648-4	36" x 48"	4,000	1	45°	940
ULTT-4848-4	48" x 48"	4,000	1	45°	1110
ULTT-5448-4	54" x 48"	4,000	1	45°	1140
ULTT-3648-6	36" x 48"	6,000	2	45°	1120
ULTT-4848-6	48" x 48"	6,000	2	45°	1330
ULTT-5448-6	54" x 48"	6,000	2	45°	1360

FOOT CONTROL, MODEL ULTT-FC