

1. Optional Front Flange
2. Optional Back Flange

Description & Features:

- High quality, commercial grade gauge at an economical price
- $\pm 1\%$ accuracy
- Adjustable pointer
- Steel and aluminum cases
- Brass wetted parts
- CRN registered
- 3 year warranty

Applications:

- Plumbing and heating

Specifications	
Dial	3.5" (90mm), 4" (100mm): Black steel 4.5" (115mm), 6" (150mm): White aluminum dial
Case	3.5" (90mm), 4" (100mm) Back: Steel 4.5" (115mm), 6" (150mm) Bottom: Black steel Others: Black aluminum
Lens	3.5" (90mm), 4.5" (115mm) bottom connection, 6" (150mm): Glass Others: Polycarbonate
Ring	3.5" (90mm), 4" (100mm), 4.5" (115mm) bottom connection: Polished brass 6" (150mm) bottom connection: Steel painted black
Socket	Brass
Connection	1/4" NPT standard
Bourdon Tube	Phosphor bronze
Pointer	Black aluminum, adjustable
Welding	Silver alloy
Over-Pressure Limit	25% of full scale value
Working Pressure	Maximum 75% of full scale value
Ambient/Process Temperature	-40°F to 150°F (-40°C to 65°C)
Accuracy	$\pm 1\%$ ANSI/ASME Grade 1A

Order Codes (products in bold are normally in stock)

Dial Size	3.5" (90mm)		4" (100mm)	4.5" (115mm)		6" (150mm)	
Case Material	Steel		Steel	Aluminum		Steel	Aluminum
Connection	Bottom	Centre Back	Centre Back	Bottom	Lower Back	Bottom	Lower Back
30" Hg. vacuum/kPa	P1S234	P1S560	P1S460	P1S410	P1S430	P1S250	P1S475
30"/0/15 psi/kPa	P1S230	P1S568	P1S468	P1S411	P1S431	P1S251C	P1S476
30"/0/30 psi/kPa	P1S231	P1S569	P1S469	P1S412	P1S432	P1S252C	P1S477
30"/0/60 psi/kPa	P1S232	P1S570	P1S470	P1S413	P1S433	P1S259C	P1S478
30"/0/100 psi/kPa	P1S233	P1S571	P1S471	P1S414	P1S434	P1S253C	P1S479
30"/0/160 psi/kPa	P1S229	P1S572	P1S472	P1S416	P1S436	P1S254C	P1S480
30"/0/200 psi/kPa	-	P1S573	-	P1S417	P1S437	P1S255C	P1S481
30"/0/300 psi/kPa	P1S227	P1S574	P1S473	P1S418	P1S438	P1S256C	P1S482
0 - 15 psi/kPa	P1S228	P1S561	P1S461	P1S419	P1S439	-	-
0 - 30 psi/kPa	P1S235	P1S562	P1S462	P1S420	P1S440	P1S251	P1S483
0 - 60 psi/kPa	P1S236	P1S563	P1S463	P1S421	P1S441	P1S252	P1S484
0 - 100 psi/kPa	P1S237	P1S564	P1S464	P1S422	P1S442	P1S253	P1S485
0 - 160 psi/kPa	P1S238	P1S565	P1S465	P1S423	P1S443	P1S254	P1S486
0 - 200 psi/kPa	P1S239	P1S566	P1S466	P1S424	P1S444	P1S255	P1S487
0 - 300 psi/kPa	P1S240	P1S567	P1S467	P1S426	P1S446	P1S256	P1S488
0 - 600 psi/kPa	-	-	-	P1S490	-	-	-
0 - 1,000 psi/kPa	-	-	-	P1S491	-	-	-
0 - 3,000 psi/kPa	-	-	-	P1S492	-	-	-
0 - 5,000 psi/kPa	-	-	-	P1S493	-	-	-

Option suffix for above order codes only:

35QBF = 3.5" Back flange

45QBF = 4.5" Back flange

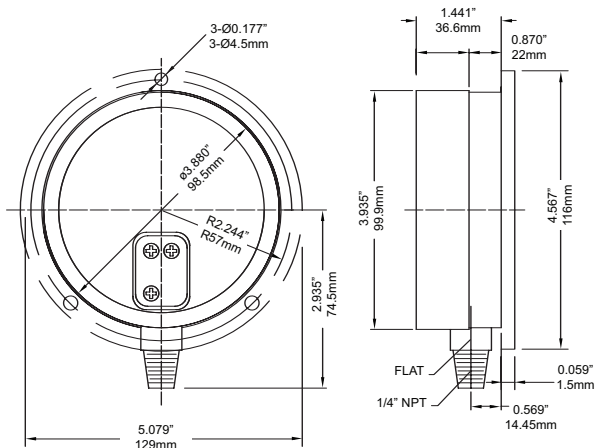
Other connections and ranges available upon request

4QBF = 4" Back flange

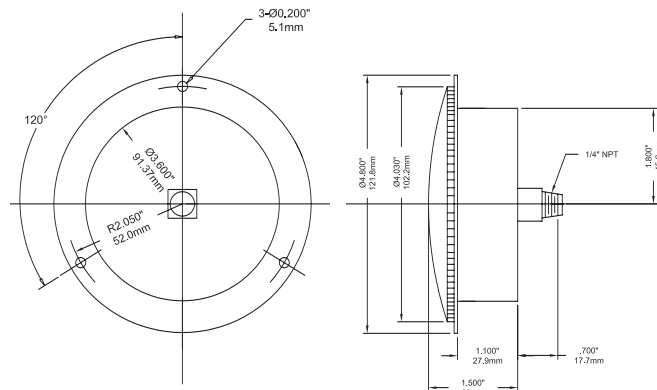
6QBF = 6" Back flange

Note: Syphon recommended for all steam applications

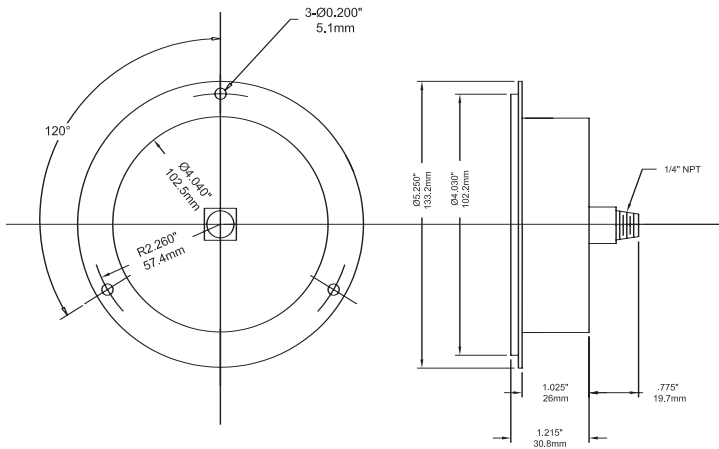
3.5" Bottom Connection with Optional Back Flange



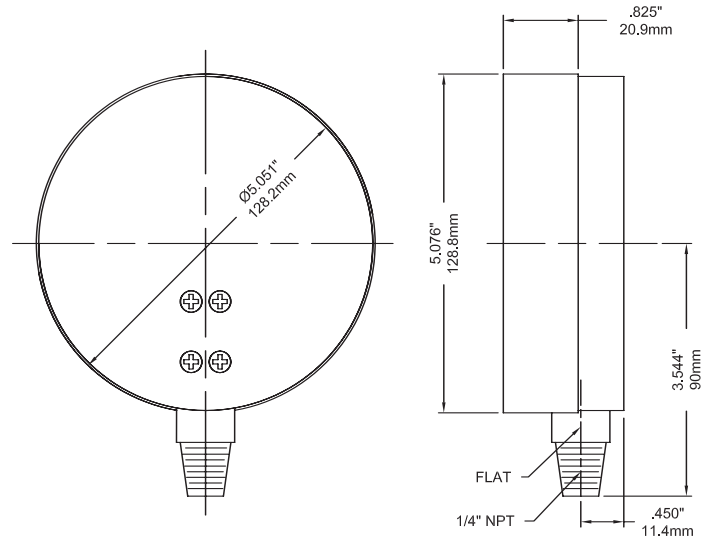
3.5" Back Connection with Standard Front Flange



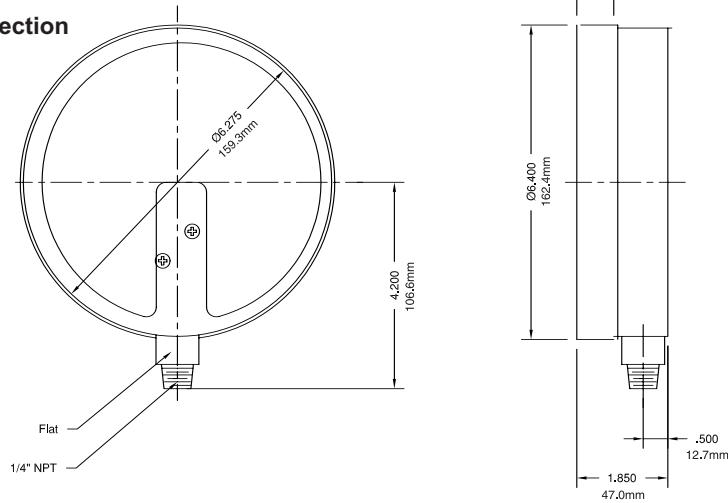
4" Centre Back Connection with Front Flange



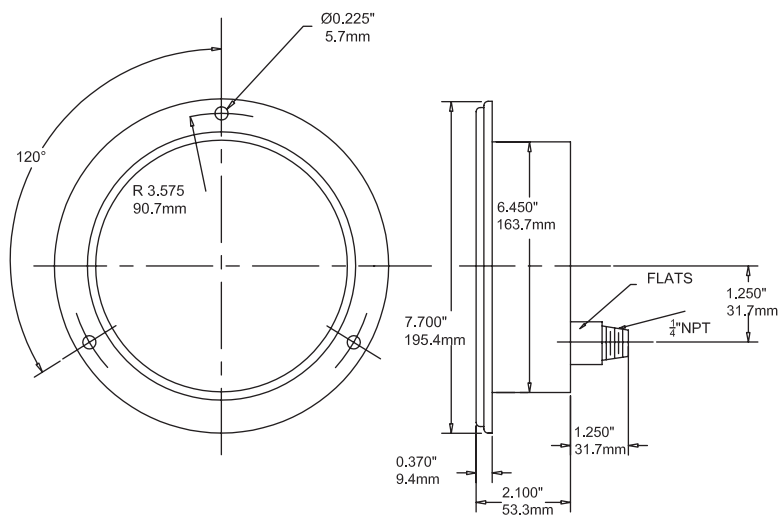
4.5" Bottom Connection



6" Bottom Connection



6" Back Connection with Front Flange



Series Number (for custom, non-standard product)

	P	1	S	-			-		-		-		-			-			-			
SERIES																						
DIAL SIZE																						
3.5" (90mm)					3	5																
4.0" (100mm)					4	0																
4.5" (115mm)					4	5																
5.0" (125mm)					5	0																
6.0" (150mm)					6	0																
CASE MATERIALS																						
Aluminum								A														
Steel Painted Black								Y														
WETTED PARTS																						
Brass									B													
CONFIGURATION																						
Bottom Connection, Stem Mounting										A												
Bottom Connection, Back Flange, Surface Mounting										B												
Back Connection, Stem Mounting										D												
Back Connection, Back Flange, Surface Mounting										E												
Back Connection, Wide Front Flange, (Drilled) Panel Mounting										F												
Special										Z												
CONNECTION SIZE																						
1/4"												4										
Special												Z										
THREAD																						
NPT													N									
BSP (G)													B									
BSPT (R)													T									
Special													Z									
<i>PRIMARY SCALE</i>																						
UNITS - See Page 10																						
RANGE - See Page 10																						
<i>SECONDARY SCALE</i>																						
UNITS - See Page 10																						
OPTIONS																						
Maximum Adjustable Pointer																					S	J
Oxygen Cleaning																					S	L
Test Certificate																					S	O
U-Clamp																					S	H
Back Flange + U-Clamp																					D	G
Front Flange + U-Clamp																					D	H
No Options																					X	X