

MONOXIVENT®

Source Capture Systems

PORTABLE FUME ELIMINATOR PRODUCT OVERVIEW



The Portable Fume
ELIMINATOR

1306 Mill Street
Rock Island, Illinois 61201
877.608.4383
www.monoxivent.com
info@monoxivent.com

ELIMINATE TOXIC FUMES IN YOUR WORKPLACE

Protecting your workplace environment from noxious fumes and particulates is a major concern. Monoxivent has been providing smart and innovative air cleaning solutions for customers since 1953. Monoxivent has the experience you need.

Portable Fume Eliminator • Vehicle Exhaust Removal

The Portable Fume **ELIMINATOR**

OVERVIEW:

The Portable Fume Eliminator is your answer for indoor exhaust capture, when hazardous fumes are present. The Eliminator was developed for use in shops where a conventional overhead or underfloor system is not practical.

The Eliminator is ideal for truck, bus, agricultural, and construction equipment applications. The Eliminator is easy to use and maneuver. In just seconds, the Eliminator can be moved into position, connected to a 120-volt power source (three phase option available), and turned on.

Due to its' small size, storing the Eliminator is not a problem. The compact base has a footprint of 20" x 28" (standard Eliminator) or 32" x 72" (hose reel Eliminator). Depending on the model, the vertical mast has a stored height of 90" or 120".

The adjustable mast is a key feature. It can be easily raised or lowered to fit all top and mid-body exhaust pipes. For under chassis, simply uncouple the hose on the vertical mast and couple it to an under chassis clamping nozzle.

For truck applications, the main vertical stack features a 45-degree end with an 8" opening. The configuration allows for use with straight, taper cut, turn out, and rain cap vertical stacks. For bus applications, or for vehicles with a high horizontal exit exhaust pipe, the Eliminator features a straight end with an 8" mouth.

The Eliminator is available with or without a fan. The fan is a 1.5-HP, 120-volt, single-phase unit, which produces approximately 700-800 CFM of exhaust. The discharge hose is available with two storage options: on a single hose storage mast, or on a Monoxivent hose reel.

FEATURES:

- Offered in three different models:
 - Hose Reel Model
 - Standard Model
 - Basic/Base Plate (no fan) Model

BENEFITS:

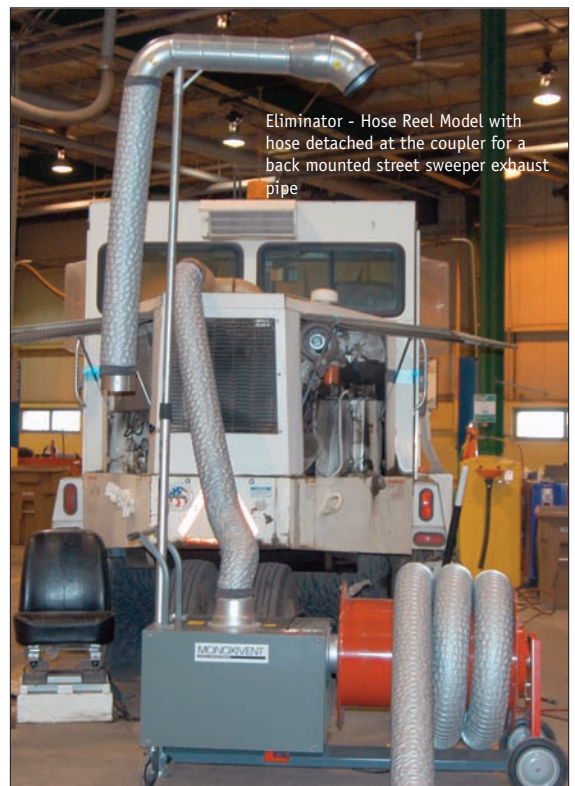
- Portable and Compact
- Self-contained Exhaust System

APPLICATIONS:

- Truck, Bus/Transit, Agricultural Equipment, Construction Equipment

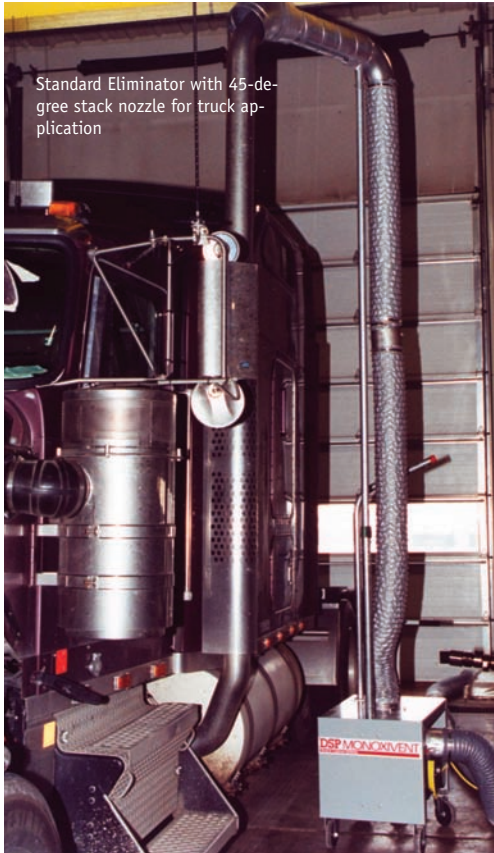


Eliminator - Hose Reel Model connected to truck using extended vertical mast

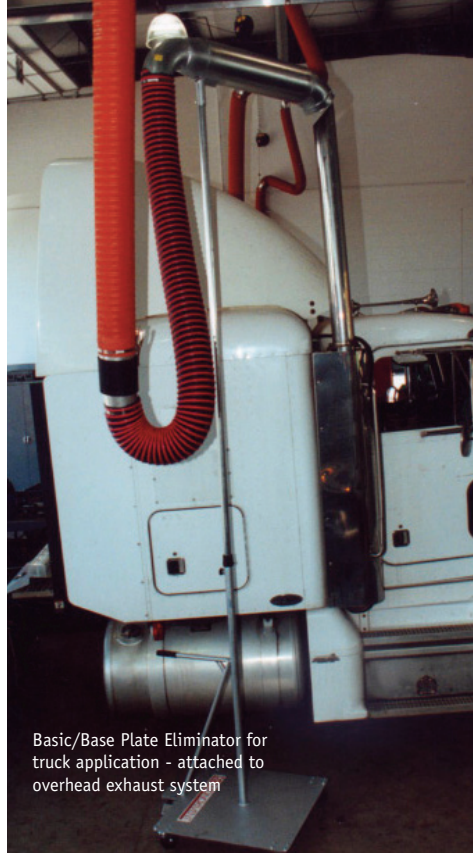


Eliminator - Hose Reel Model with hose detached at the coupler for a back mounted street sweeper exhaust pipe

Portable Fume Eliminator • Vehicle Exhaust Removal



Standard Eliminator with 45-degree stack nozzle for truck application



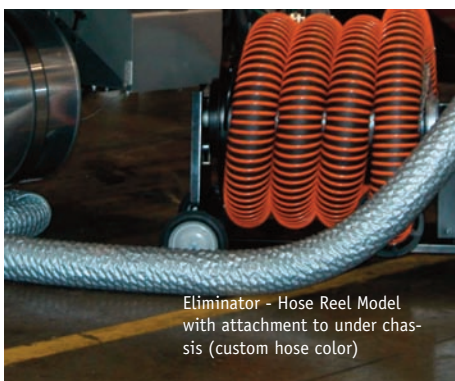
Basic/Base Plate Eliminator for truck application - attached to overhead exhaust system

System highlights follow:

- *Portable unit*
- *Compact size*
- *Easy maneuverability*
- *Telescoping mast*
- *Adjustable height*
- *No contact with vehicle*
- *Fits all top-, mid-body, and under chassis exhaust pipes*
- *Versatile hose storage options: hose reel option, hose storage mast*



Standard Eliminator with straight end nozzle for city bus application



Eliminator - Hose Reel Model with attachment to under chassis (custom hose color)



* All models ideal for truck, bus, auto, agricultural equipment, and construction equipment applications!

Models:

ELIMINATOR - HOSE REEL

- Extended base, reel used for discharge hose storage (up to 30' x 6" diameter hose), telescoping mast, radial blade fan, discharge hose, vertical stack nozzle with straight end or 45-degree end, 45' electrical spring retractable reel, optional self-storing under-chassis tailpipe adapter

ELIMINATOR - STANDARD

- Standard base, small mast used for hose storage, telescoping mast, radial blade fan, discharge hose, vertical stack nozzle with straight end or 45-degree end, 45' electrical spring retractable reel, optional self-storing under-chassis tailpipe adapter

ELIMINATOR - BASIC/BASE PLATE

- Base plate, telescoping mast, vertical stack nozzle with straight end or 45-degree end