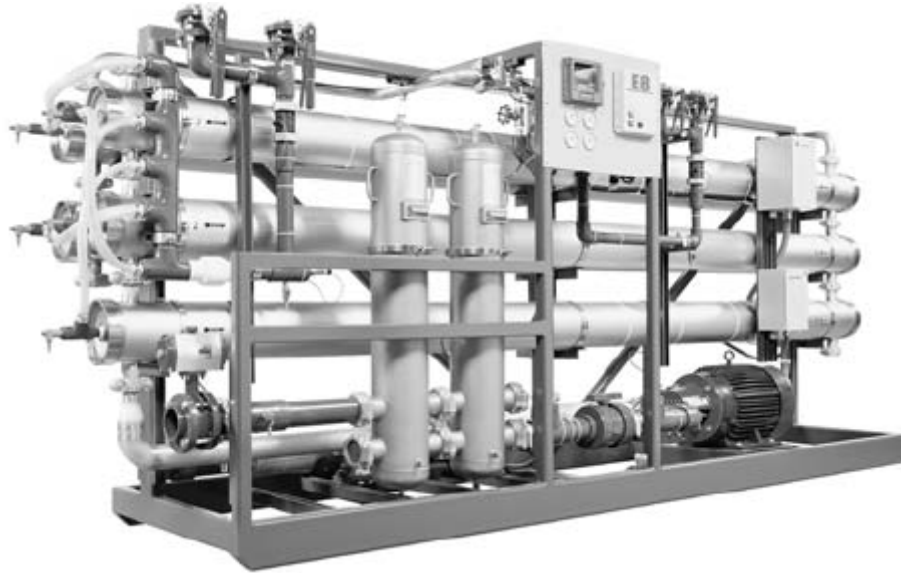


REVERSE OSMOSIS MACHINES

R08 SERIES (57 to 144 thousand gpd)



STANDARD ECONOMY FEATURES (ECN)

- Energy saving 400 ft² (37.2 m²) membrane elements
- SS high-pressure piping
- 1-micron pre-filter and SS housing
- Automatic inlet shut-off valve
- PLC control Lakewood Instruments* 2450 controller
- Digital permeate and concentrate flow meters
- Digital conductivity meter
- Modem Monitoring
- ALARMS: Low inlet pressure, starter overload trip, high temperature [105°F (41°C)], high permeate conductivity
- Remote machine on/off capability
- Autoflush system
- Pre-filter, post-filter, primary, and final pressure gauges

DELUXE FEATURES DLX

(IN ADDITION TO ECN FEATURES)

- Digital pH controller system
- Chemical dosing system
- Permeate purge
- Permeate purge disable capabilities
- ALARMS: High permeate pressure, high/low pH
- Clean-In-Place pump plumbed, wired and mounted; remote tank

CAT715.2

PUMP AND MOTOR

- Pump Manufacturer Tonkaflo
- Pump Type Multi-stage, centrifugal
- Materials SS shell/housing, Noryl* internals
- Castings SS inlet/discharge
- Motor 3-phase, TEFC, 460 V

OPERATING PARAMETERS

- Operating Pressure 200-250 psig (13.8- 17.2 bar)
- Maximum Recovery 75%
- Nominal Rejection 95-98%
- Operating Temperature 55-85 °F (13-30 °C)
- Minimum Inlet Pressure 30 psig (2 bar)
- Design Temperature 77 °F (25 °C)

MATERIALS OF CONSTRUCTION

- Frame Painted Carbon Steel
- Membrane Elements Desal AG8040F-400
- Membrane Housing Stainless Steel
- Low Pressure Pipe Schedule 80 PVC
- High Pressure Pipe Stainless Steel
- Control Enclosure NEMA 12
- Motor Starters NEMA 4

REVERSE OSMOSIS (RO-8)				
	RO8 - 57	RO8 - 86	RO8 - 108	RO8 - 144
Standard - STD	932221	932223	932225	932227
Delux - DLX	932222	932224	932226	932228
Recovery Range:	66-75%	66-75%	66-75%	66-75%
Permeate Rate: gpm (m ³ /h)	40 (9)	60 (14)	75 (17)	100 (23)
Concentrate Rate: gpm (m ³ /h)	21-13 (5-3)	30-20 (7-5)	39-25 (9-6)	52-33 (12-8)
RO Pump Model	SS8510KA	SS8512KB	SS12508KC	SS12512KE
RO Motor: HP (KW)	15 (11.2)	20 (15)	25 (18.7)	40 (29.8)
CIP Pump Model: (DLX only)	SS5504G	SS5504G	SS8504G	SS8504G
CIP Motor: HP (KW)	5 (3.7)	5 (3.7)	7.5 (5.6)	7.5 (5.6)
Membrane Quantity	8	12	15	20
Array	1-1-1	2-1-1	3-2	3-2
Pre-Filter Quantity	5, RO.Zs 01-30-XK	5, RO.Zs 01-40-XK	5, RO.Zs 01-40-XK	10, RO.Zs 01-30-XK
Inlet: inch (cm)	2.0 (5.1)	2.0 (5.1)	2.0 (5.1)	3.0 (7.6)
Permeate: inch (cm)	1.5 (3.8)	2.0 (5.1)	2.0 (5.1)	2.0 (5.1)
Concentrate: inch (cm)	1.5 (3.8)	1.5 (3.8)	1.5 (3.8)	1.5 (3.8)
Height: inch (cm)	72 (138)	72 (138)	72 (138)	72 (138)
Width: inch (cm)	139 (353)	139 (353)	139 (353)	179 (455)
Depth: inch (cm) STD	40 (102)	40 (102)	40 (102)	40 (102)
Depth: inch (cm) DLX	81 (206)	81 (206)	81 (206)	91 (231)
Shipping Weight Estimate: lb (kg) STD	2600 (1200)	3100 (1400)	3400 (1500)	3500 (1600)
Shipping Weight Estimate: lb (kg) DLX	3000 (1400)	3600 (1600)	3800 (1700)	4000 (1800)