

BUP Series Indoor/Outdoor Protectors

■ Outside Plant for
Business-Critical Continuity

Key Features

- Compact size requires minimum mounting space
- Outdoor mounting capability for greater accessibility
- Built-in splice chamber provides enhanced wire management and additional environmental protection
- Patented sealed protector module chamber offers a direct outdoor application of 5-pin protector modules; reduces installation and maintenance costs
- Variety of input and output connections provides application flexibility
- UL Listed for documented performance

Description

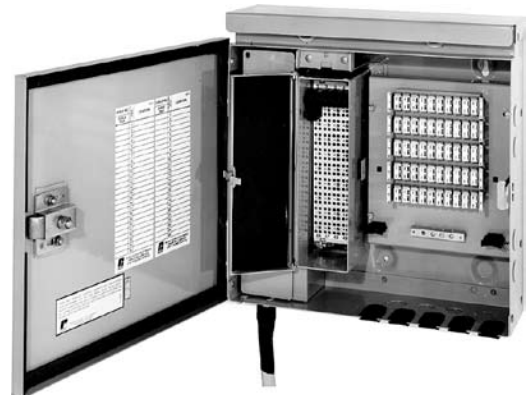
The BUP is an outdoor-rated, self-contained building entrance protector. Whether used for indoor or outdoor applications, no additional closures are necessary. The BUP is manufactured of heavy gauge mill-galvanized steel treated with a unique finishing process for longer life. Input connection options include field splice tail, 3M® 4000-D dry connectors, 710 filled connectors or cable stub. Outgoing pair distribution options are RLS IDC or quiet-front binding post screw down terminal blocks.

The BUP series utilizes 5-pin protector modules housed in a sealed chamber-within-a-chamber for maximum environmental protection, which is especially important for outdoor applications. All UL listed standard 5-pin protector modules may be used with the BUP series. (See section 11 of this catalog, entitled "Protection Arresters & Modules," for a full list of the protector modules offered by Emerson.)

The BUP is wall or pole-mountable. Units can be ordered as stackable to 300 pairs, or can be made stackable with the addition of a stacking kit. The units can also be outfitted with a cable skirt, providing protection to the feeder and distribution cable from incidental contact and from the environment. A 216-type can wrench (Emerson catalog no. 15 or 38) is required in order to open the unit. For further security, each unit is also equipped with a padlock hasp.

Application

BUP building entrance protectors provide a termination, protection, and distribution point for 25, 50, or 100 pairs (stackable to 300 pairs) from the central office to the subscriber premises. Potential application locations include multi-tenant dwelling complexes, hospitals, factories, shopping strips, schools, and campus environments.



BUP50SE6

Dimensions

Pair Count	H	W	D
25 & 50	15.00-in. (38.10 cm)	15.41-in. (39.14 cm)	4.70-in. (11.94 cm)
100	24.30-in. (61.75 cm)	15.41-in. (39.14 cm)	4.70-in. (11.94 cm)



BUP Series Indoor/Outdoor Protectors

Ordering Matrix

Housing	BUP = Indoor/Outdoor Building Entrance Protector	
Output	S = RLS	B = BT/CQF
Pair Count	25 = 25 pair 50 = 50 pair	100 = 100 pair
Input	FS = Field splice - 18" wire harness bundle MM = 3M 4000-D dry, (MS2) CF = 710 filled, capless, receptacle	SE6 = 6 foot, 24 AWG stub SE12 = 12 foot, 24 AWG stub SE25 = 25 foot, 24 AWG stub
Options	SKT = Skirt compatible	STK = Stackable (non-stubbed units)

Accessories

Catalog Number	Part Number	Description
BUPWM1	F019741	Metal wall-mounting bracket for 25 & 50-pair BUP (optional)
BUPWM2	F019735	Metal wall-mounting bracket for 100-pair BUP (optional)
BUPPM1	F019742	Metal pole-mounting bracket for 25 & 50-pair BUP & BUPNP1
BUPPM2	F019738	Metal pole-mounting bracket for 100-pair BUP & BUPNP2
BUPSKT	F787554	Cable skirt for 25, 50, & 100-pair BUP, 28"H x 15.07"W x 6"D
BUPLONGSKT	F740098	Cable skirt for 25, 50, & 100-pair BUP, 52"H x 15.07"W x 6"D
LOOSEPARTSNX2	F039419	Stacking kit for 25 & 50-pair BUP*
P52859	F552859	Stacking kit for 100-pair BUP*

* Each stacking kit joins two units only. If stacking three units, order two stacking kits. Also, unless the units have been ordered stackable, the end user may have to make a hole at the top of the splice chamber for feeding the remaining cable splice through to the upper unit(s).



Pole-Mount Bracket for 25 and 50-Pair Closure BUPPM1



Wall-Mount Bracket for 25 and 50-Pair Closure BUPWM1



BUPSKT

Emerson Network Power.

The global leader in enabling business-critical continuity.

- AC Power
- Embedded Power
- Precision Cooling
- Connectivity
- Monitoring
- Racks & Integrated Cabinets
- DC Power
- **Outside Plant**
- Services
- Embedded Computing
- Power Switching & Controls
- Surge Protection

Emerson Network Power Energy Systems

4350 Weaver Parkway, Warrenville, IL 60555
Toll Free: 800-800-1280 (USA and Canada)
Telephone: 440-246-6999 Fax: 440-246-4876
Web: EmersonNetworkPower.com/EnergySystems

© 2007 Emerson Network Power Energy Systems, North America, Inc. All rights reserved.

The Emerson logo is a trademark and a service mark of Emerson Electric Co. Emerson Network Power is a division of Emerson Electric Co.

Printed in USA



BEP Series Building Entrance Protectors

■ Outside Plant for
Business-Critical Continuity

Key Features

- Built-in splice chamber provides material and installation cost savings
- Lift-out protector panel facilitates installation; reduces inventory costs; is easy to repair
- Compact size requires minimum mounting space
- All units are stackable to accommodate future growth
- Gold-plated protector contacts minimize noise and customer complaints
- Rugged metal housing made of mill-galvanized steel for durability and low maintenance costs
- Designed to meet Telcordia TR-TSY-000299 and RDUP (formerly RUS) specifications for documented performance
- UL Listed with industry standard 5-pin protector modules (gas or solid-state); for documented performance
- 26AWG 18-in. fuse link for added protection
- Lock hasp provided for added security

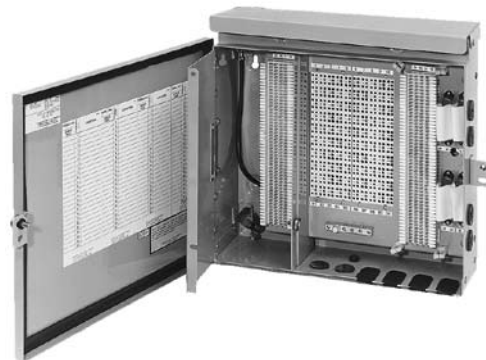
Description

The BEP series combine protection and distribution with a built-in splice chamber, for a single, compact, cost-effective unit designed for indoor building entrance applications. Central office pairs are connected with the following options: field splice, stub, 710 connectors, 3M® dry connectors, 66 quick-clip block, or 110-style block. The BEP series also offers a 26AWG fuse link for added protection. Subscriber wires are connected via the following options: 66 quick-clip, RJ21, 66 quick-clip and RJ21, 110-style block, or binding posts.

The BEP series is available in 25, 50, and 100-pair sizes. The 100-pair unit is stackable to 300-pair (stacking kit included in 100-pair). The protector modules can be included or purchased separately. The closure is accessed using a 216-type tool.

Application

The BEP series terminate, protect, and distribute central office cable pairs on the subscriber premises. They are ideal for use in multi-tenant dwelling and PABX installations.

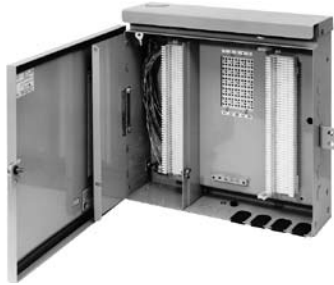


Quick-clip In/Quick-clip and RJ21 Out

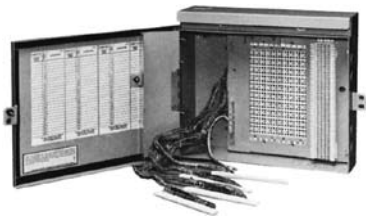

EMERSON[™]
Network Power

Enterprise : 3

BEP Series Building Entrance Protectors



**BEPC25C (25-pair)
Quick-clip In & Out**



**BEPC100MM (100-pair)
3M® Dry Connector In/Quick-clip Out**

Dimensions

Pair Count	H	— Housing Dimensions —	
		W	D
25/50/100	15.00-in. (38.10 cm)*	15.41-in. (39.14 cm)	4.7-in. (11.94 cm)

* 100-pair with binding posts has a 36-in. (91.44 cm) height.

NOTE: All dimensions are measured in inches, with metric conversions in parentheses.

Ordering Matrix

Housing	BEP = Building Entrance Protector
Output	C = 66 Quick-clip block G = RJ21 receptacle connector CG = 66 Quick-clip block & RJ21 receptacle connector B = Binding posts T = 110-style block
Pair Count	25 = 25-pair 50 = 50-pair 100 = 100-pair**
Input	FS = Field Splice, 18-in. tail CF = 710 connector, capless, receptacle, gel-filled, 18-in. tail, 26AWG fuselink MM = 3M 4000-D dry (MS2), 18-in. tail, 26AWG fuselink C = 66 Quick-clip block, 26AWG fuselink SC = 24AWG cable stub T = 110-style block, 26AWG fuselink
Cable Full Length (only if "sc" input)	6 = 6-ft. 12 = 12-ft. 25 = 25-ft. blank = Stubbleless

** 100-pair includes stacking kit

NOTE: To order with 5 protector modules installed, call customer service.

Accessories

Catalog Number	Part Number	Description
P35980	F535980	Grommets for 1-in. diameter hole (pkg. of 20)
P47839	F547839	U-shaped grommet
P47147	F547147	Cup-sems with push nut (pkg. of 10)

NOTE: For additional accessories, see the Accessories section of the catalog.

Emerson Network Power.

The global leader in enabling business-critical continuity.

- AC Power
- Embedded Power
- Precision Cooling
- Connectivity
- Monitoring
- Racks & Integrated Cabinets
- DC Power
- **Outside Plant**
- Services
- Embedded Computing
- Power Switching & Controls
- Surge Protection

Emerson Network Power Energy Systems

4350 Weaver Parkway, Warrenville, IL 60555
Toll Free: 800-800-1280 (USA and Canada)
Telephone: 440-246-6999 Fax: 440-246-4876
Web: EmersonNetworkPower.com/EnergySystems

© 2007 Emerson Network Power Energy Systems, North America, Inc. All rights reserved.

The Emerson logo is a trademark and a service mark of Emerson Electric Co. Emerson Network Power is a division of Emerson Electric Co.

Printed in USA

